

Product Data Sheet

PE/Cy5 anti-human CD235ab

Catalog # / Size: 306605 / 25 µg
 306606 / 100 µg

Clone: HIR2

Isotype: Mouse IgG2b, κ

Workshop Number: VII 70299

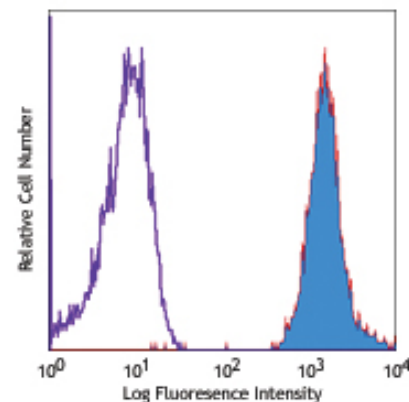
Reactivity: Human

Preparation: The antibody was purified by affinity chromatography, and conjugated with PE/Cy5 under optimal conditions. The solution is free of unconjugated PE/Cy5 and unconjugated antibody.

Formulation: Phosphate-buffered solution, pH 7.2, containing 0.09% sodium azide.

Concentration: 0.2 mg/ml

Storage: The antibody solution should be stored undiluted at 4°C and protected from prolonged exposure to light. **Do not freeze.**



Human red blood cells stained with HIR2 PE/Cy5

Applications:

Applications: FC - Quality tested

Recommended Usage: Each lot of this antibody is quality control tested by immunofluorescent staining with flow cytometric analysis. For immunofluorescent staining, the suggested use of this reagent is ≤0.06 µg per million cells in 100 µl volume. It is recommended that the reagent be titrated for optimal performance for each application.

Cy3, Cy5, Cy5.5 and Cy7 are subject to proprietary rights of GE Healthcare Bio-Sciences Corp. and Carnegie Mellon University and made and sold under license from GE Healthcare Bio-Sciences Corp. Sale of this product is licensed for research use only.

Application References: 1. Mason D, *et al.* Eds. 2002. Leucocyte Typing VII. Oxford University Press. New York.

Description: The HIR2 antibody reacts with a common epitope of glycophorin A (CD235a) and glycophorin B (CD235b). Glycophorin A is the major sialoglycoprotein expressed on red blood cell membrane, and erythroid precursors. Glycophorin A shares strong homology with glycophorin B. The HIR2 antibody recognizes human RBCs and erythroid precursors and is useful in erythroid cell development studies. Mature, non-nucleated red blood cells are characteristically glycophorin A positive, but CD45 and CD71 negative.

Antigen References: 1. Mason D, *et al.* Eds. 2002. Leucocyte Typing VII. Oxford University Press. New York.

Related Products:

Product
 PE/Cy5 Mouse IgG2b, κ Isotype Ctrl
 Cell Staining Buffer
 RBC Lysis Buffer (10X)
 Human TruStain FcX™ (Fc Receptor Blocking Solution)

Clone
 MPC-11

Application
 FC, ICFC
 FC, ICC, ICFC
 FC, ICFC
 FC, ICC, ICFC



For research use only. Not for diagnostic use. Not for resale. BioLegend will not be held responsible for patent infringement or other violations that may occur with the use of our products.



*These products may be covered by one or more Limited Use Label Licenses (see the BioLegend Catalog or our website, www.biollegend.com/ordering#license). BioLegend products may not be transferred to third parties, resold, modified for resale, or used to manufacture commercial products, reverse engineer functionally similar materials, or to provide a service to third parties without written approval of BioLegend. By use of these products you accept the terms and conditions of all applicable Limited Use Label Licenses. Unless otherwise indicated, these products are for research use only and are not intended for human or animal diagnostic, therapeutic or commercial use.