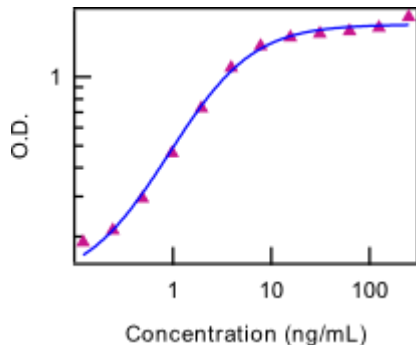


## Mouse IL-15/IL-15R Complex Recombinant Protein

**Catalog Number:** 14-8152

**Also known as:** Interleukin 15, IL15, IL-15 receptor, receptor/ligand complex

**RUO: For Research Use Only. Not for use in diagnostic procedures.**



Proliferation of CTLL-2 cells in response to Mouse IL-15/IL-15R Complex Recombinant Protein.

### Product Information

**Contents:** Mouse IL-15/IL-15R Complex Recombinant Protein

**REF**

**Catalog Number:** 14-8152

**Handling Conditions:** For best recovery, quick-spin vial prior to opening. Use in a sterile environment

**Source:** Insect cell expressed N-terminal His-Tagged mIL-15R $\alpha$  Gly33-Ala132 accession # NP\_032384 - GS linker - mIL-15 Asn49-Ser162 accession # NP\_032383

**Molecular Mass:** 29.4 kDa

**Purity:** > 98%, as determined by SDS-PAGE.

**Endotoxin:** Less than 0.1 ng/ug cytokine as determined by the LAL assay.

**Bioactivity:** The ED50 of this protein, as measured by CTLL-2 cell proliferation assay, is less than or equal to 4 ng/mL. This corresponds to a specific activity of greater than or equal to 2.5 x 10<sup>5</sup> Units/mg.

**Formulation:** Sterile liquid; 20mM Tris, 60mM NaCl, pH 8, with 1.0% BSA. 0.22 um filtered.

**Temperature Limitation:** Store at less than or equal to -70°C.

**Batch Code:** Refer to vial

**Use By:** Refer to vial



**LOT**



### Description

This recombinant protein is the heterocomplex of the mouse IL-15 linked to soluble IL-15 receptor alpha chain (sushi domain) via a GS linker.

Interleukin 15 (IL-15) is a cytokine that stimulates T and NK cell proliferation and differentiation. IL-15 regulates macrophage proinflammatory and chemotactic protein production. In addition, it induces differentiation of monocytes towards dendritic cells. The receptor for IL-15 is a high affinity heterotrimeric receptor composed of IL-15R $\alpha$  and 2 additional subunits of the IL-2 receptor (beta and gamma). Upon activation, the receptor complex signals via the Stat and JAK pathways.

It has been reported that the soluble form of IL-15R $\alpha$  corresponding to the entire extracellular domain, cleaved by MMP's, behaves as a high affinity IL-15 antagonist, whereas the recombinant extracellular domain comprised of the sushi domain together with the ligand, IL-15, behaves as a potent agonist by enhancing binding of IL-15 to the receptor complex. In fact, this receptor-ligand complex has approximately 10-100 fold increased proliferative activity.

### Applications Reported

Not for further distribution without written consent.

Copyright © 2000-2012 eBioscience, Inc.

Tel: 888.999.1371 or 858.642.2058 • Fax: 858.642.2046 • [www.ebioscience.com](http://www.ebioscience.com) • [info@ebioscience.com](mailto:info@ebioscience.com)

---

## Mouse IL-15/IL-15R Complex Recombinant Protein

**Catalog Number:** 14-8152

**Also known as:** Interleukin 15, IL15, IL-15 receptor, receptor/ligand complex

**RUO: For Research Use Only. Not for use in diagnostic procedures.**

---

Recombinant mouse IL-15/IL-15RA complex is biologically active.

### Applications Tested

The ED50 of this protein, as measured by CTLL-2 cell proliferation assay, is less than or equal to 4 ng/mL. This corresponds to a specific activity of greater than or equal to 2.5 x 10<sup>5</sup> Units/mg.

### References

Mortier E, Quéméner A, Vusio P, Lorenzen I, Boublik Y, Grötzinger J, Plet A, Jacques Y. Soluble interleukin-15 receptor alpha (IL-15R alpha)-sushi as a selective and potent agonist of IL-15 action through IL-15R beta/gamma. Hyperagonist IL-15 x IL-15R alpha fusion proteins. *J Biol Chem.* 2006 Jan 20;281(3):1612-9.

Teague, R. M. Sather, B. D. Sacks, J. A. Huang, M. Z. Dossett, M. L. Morimoto, J. Tan, X. Sutton, S. E. Cooke, M. P. Ohlen, C. Greenberg, P. D. Interleukin-15 rescues tolerant CD8+ T cells for use in adoptive immunotherapy of established tumors. *Nature Med.* 2006; 12: 335-341.

Vamosi G, Bodnar A, Vereb G, Jenei A, Goldman CK, Langowski J, Toth K, Matyus L, Szollosi J, Waldmann TA, Damjanovich S. IL-2 and IL-15 receptor alpha-subunits are coexpressed in a supramolecular receptor cluster in lipid rafts of T cells. *Proc Natl Acad Sci U S A.* 2004 Jul 27;101(30):11082-7.

Dubois S, Mariner J, Waldmann TA, Tagaya Y. IL-15Ralpha recycles and presents IL-15 In trans to neighboring cells. *Immunity.* 2002 Nov;17(5):537-47.

### Related Products

34-8151 Mouse IL-15 Recombinant Protein Carrier-Free

34-8152 Mouse IL-15/IL-15R Complex Recombinant Protein Carrier-Free

---

Not for further distribution without written consent.

Copyright © 2000-2012 eBioscience, Inc.

Tel: 888.999.1371 or 858.642.2058 • Fax: 858.642.2046 • [www.ebioscience.com](http://www.ebioscience.com) •  
[info@ebioscience.com](mailto:info@ebioscience.com)