



TrackIt™ 100 bp DNA Ladder

Cat. No. 10488-058

Size: 100 applications

Conc. 0.1 µg/µl

Store at room temperature

Introduction

The TrackIt™ 100 bp DNA Ladder is suitable for sizing double-stranded DNA fragments from 100-1500 bp. The ladder is prepared from a plasmid containing repeats of a 100 bp DNA fragment.

The TrackIt™ 100 bp DNA Ladder is formulated with unique tracking dyes, Xylene Cyanol FF (XCFF) and tartrazine, that allow you to visually track DNA migration during electrophoresis and also indicate when maximum resolution is achieved. The tracking dyes do not obscure the visualization of DNA bands in the ladder as the dyes run outside the limits of most DNA bands in the ladder.

The important features of the ladder are listed below:

- Consists of 15 fragments in 100 bp increments ranging in size from 100-1500 bp and an additional band at 2072 bp
- 600 bp reference band is ~2-fold brighter than other bands for easy determination of band size
- Formulated with unique tracking dyes, XCFF and tartrazine
- Designed for use with E-Gel® agarose gels and TBE/TAE agarose gels
- Supplied in a ready-to-load format
- Visualized with ethidium bromide or SYBR® Green staining

Specifications

Storage Buffer: 10 mM Tris-HCl, pH 7.5; 10 mM EDTA, pH 8.0;
0.06% XCFF; 0.6% tartrazine; 5% glycerol

Storage: Store at room temperature

Stability: 6 months at room temperature

Part No. 10488058.pps

Rev. Date: 12 Nov 2003

This product is distributed for laboratory research only. CAUTION: Not for diagnostic use. The safety and efficacy of this product in diagnostic or other clinical uses has not been established.

For technical questions about this product, call the Invitrogen Tech-Line® U.S.A. 800 955 6288

Directions

The TrackIt™ 100 bp DNA Ladder is supplied in a ready-to-load format. **There is no need to heat the ladder prior to loading.**

Note: The TrackIt™ 100 bp DNA Ladder is not recommended for use with polyacrylamide gels and is not designed for quantitation.

1. Vortex the ladder gently to ensure the solution is homogenous.
2. Load the ladder using the loading volumes listed below to obtain the best results.

TAE or TBE agarose gel (1% to 2%)

Load 5 µl TrackIt™ 100 bp DNA Ladder per 5 mm lane width on a TAE or TBE agarose gel.

1.2% E-Gel® agarose gel

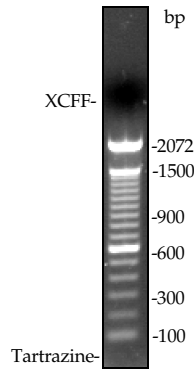
Mix 2 µl TrackIt™ 100 bp DNA Ladder with 18 µl deionized water and load 20 µl of the diluted ladder in the well of a single-comb E-Gel®. Loading undiluted TrackIt™ DNA Ladder on an E-Gel® will result in loss of resolution.

3. Load your DNA samples.
We recommend using the TrackIt™ Cyan/Yellow Loading Buffer to prepare your DNA samples. The TrackIt™ Loading Buffers contain the same two tracking dyes as the TrackIt™ DNA Ladders that allow you to visually track DNA migration during electrophoresis without obscuring any DNA bands. **Note:** If you are using TrackIt™ Cyan/Yellow Loading Buffer to prepare samples for E-Gel® agarose gels, dilute this buffer 60-fold (refer to the manual supplied with the loading buffer).
4. After electrophoresis, stain the DNA ladder with ethidium bromide or SYBR® Green I Nucleic Acid Gel Stain. **Note:** There is no need to stain E-Gel® agarose gels as the gels contain ethidium bromide.
5. Visualize DNA bands of the ladder on a UV transilluminator. An example of the ladder analyzed on an E-Gel® is shown on the next page.

Example

The TrackIt™ 100 bp DNA Ladder (2 µl) was mixed with 18 µl deionized water and 20 µl of the diluted ladder was analyzed on a 1.2% E-Gel® agarose gel. The gel was visualized and imaged on a UV transilluminator equipped with a camera. The migration of tracking dyes is indicated in the figure below.

Note: For more details on the migration of XCFF and tartrazine in different percentage agarose gels, contact Technical Service.



Product Qualification

Agarose gel analysis must show that bands between 100-1500 bp are distinguishable after ethidium bromide staining. The 600 bp band must be more intense than any other ladder bands except the 2072 bp band.

Accessory Products

The following products are available separately from Invitrogen.

Product	Quantity	Catalog no.
E-Gel® 1.2%, 18 Pak	18 gels	G5018-01
UltraPure™ Agarose	100 g	15510-019
UltraPure™ Low Melting Point Agarose	50 g	15517-014
UltraPure™ 10 mg/ml Ethidium Bromide	10 ml	15585-011
TrackIt™ Cyan/Yellow Loading Buffer	3 x 0.5 ml	10482-035
SYBR® Green I Nucleic Acid Gel Stain	500 µl	S-7563

©2003 Invitrogen Corporation. All rights reserved.