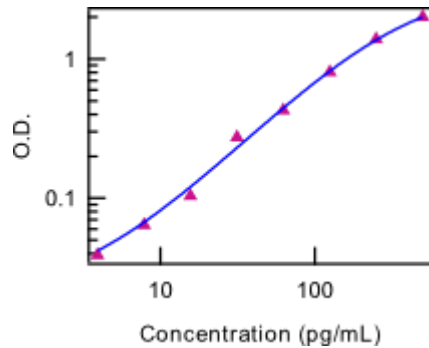


Human IL-12 p70 ELISA Ready-SET-Go![®]

Catalog Number: 88-7126

Also known as: Interleukin-12, IL12, IL23

RUO: For Research Use Only. Not for use in diagnostic procedures.



Standard curve of Human IL-12 p70 ELISA Ready-SET-Go![®]

Product Information

Contents: Human IL-12 p70 ELISA Ready-SET-Go![®]

REF **Catalog Number:** 88-7126

Sensitivity: 4 pg/mL

Standard Curve Range: 4 - 500 pg/mL



Temperature Limitation: Store at 2-8°C except standard which should be stored at less than or equal to -70°C.



Batch Code: Refer to vial



Use By: Refer to vial



Caution, contains Azide

Description

This Human IL-12 p70 ELISA Ready-SET-Go! reagent set (with or without high-affinity binding microwell plates) contains the necessary reagents, buffers and diluents for performing quantitative enzyme linked immunosorbent assays (ELISA). This Human IL-12 p70 ELISA Ready-SET-Go! reagent set specifically measures the bioactive, heterodimeric form of IL-12, p70, without interference by p40 monomer, homodimer, or IL-23 (p19/p40). This ELISA reagent set is specifically engineered for accurate and precise measurement of human IL-12 p70 protein levels from samples including serum, plasma, and supernatants from cell cultures.

Components

Capture Antibody. Pre-titrated, purified antibody

Detection Antibody. Pre-titrated, biotin-conjugated antibody

Standard. Recombinant cytokine for generating standard curve and calibrating samples

ELISA/ELISPOT Coating Buffer Powder. This Ready-Set-Go! ELISA Set may contain ELISA/ELISPOT Coating Buffer Powder (Reconstitute to 1L with dH2O and filter (0.22 µm)) or 10X PBS ELISA Coating Buffer (Dilute 1 part 10X Buffer into 9 parts dH2O).

Assay Diluent. 5X concentrated

Detection enzyme. Pre-titrated Avidin-HRP

Substrate Solution. Tetramethylbenzidine (TMB) Substrate Solution

Certificate of Analysis. Lot-specific instructions for dilution of antibodies and standards

96 Well Plate. Corning Costar 9018 (included with product Cat. #'s ending in suffixes -22, -44, -76, -86)

References

Fricke I, Mitchell D, Petersen F, Böhle A, Bulfone-Paus S, Brandau S. Platelet factor 4 in conjunction with IL-4 directs differentiation of human monocytes into specialized antigen-presenting cells. *FASEB J.* 2004 Oct;18(13):1588-90. (RSG ELISA, **TC sup**, PubMed)

Langrish CL, Buddle JC, Thrasher AJ, Goldblatt D. Neonatal dendritic cells are intrinsically biased against Th-1 immune responses. *Clin Exp Immunol.* 2002 Apr;128(1):118-23. (RSG ELISA, **TC sup**, PubMed)

Not for further distribution without written consent.

Copyright © 2000-2012 eBioscience, Inc.

Tel: 888.999.1371 or 858.642.2058 • Fax: 858.642.2046 • www.ebioscience.com • info@ebioscience.com

Human IL-12 p70 ELISA Ready-SET-Go!®

Catalog Number: 88-7126

Also known as: Interleukin-12, IL12, IL23

RUO: For Research Use Only. Not for use in diagnostic procedures.

Related Products

34-8239 Human IL-23 Recombinant Protein Carrier-Free

88-7234 Mouse IL-23 ELISA Ready-SET-Go!® (Discontinued: Please see 88-7230 (2nd generation assay))

Not for further distribution without written consent.

Copyright © 2000-2012 eBioscience, Inc.

Tel: 888.999.1371 or 858.642.2058 • Fax: 858.642.2046 • www.ebioscience.com •
info@ebioscience.com

Enzyme Linked Immunosorbent Assay (ELISA)

Research Use Only

Protocol: ELISA Ready-Set-Go!

The following protocol is a general guideline for the Ready-SET-Go! Sets

Materials Provided

- Please refer to the Certificate of Analysis (C of A) for components

Other Materials Needed

- Buffers*
 - Wash Buffer: 1x PBS, 0.05% Tween-20 (or eBioscience ELISA Wash Buffer Powder, Cat. No. 00-0400)
 - Stop Solution: 1M H₃PO₄ (recommended) or 2N H₂SO₄
- Pipettes
- Refrigerator & frost-free -20°C freezer
- 96-well plate (Corning Costar 9018 or NUNC Maxisorp®)
NOTE: The use of ELISA plates which are not high affinity protein binding plates will result in suboptimal performance, e.g., low signal or inconsistent data. Do not use tissue culture plates or low protein absorption plates. Use only the Corning Costar 9018 or NUNC Maxisorp (Cat. No. 44-2404) 96-well plates
- 96-well ELISA plate reader (microplate spectrophotometer)
- ELISA plate washer (highly recommended)

NOTE: To ensure optimal results from this ELISA Ready-SET-Go! Set, please only use the components included in the set. Exchanging of components is not recommended as a change in signal may occur.

Time Requirements

- 1 overnight incubation
- 4½-hour incubations
- 1 hour washing and analyzing samples

Experimental Procedure

1. Coat Corning Costar 9018 (or Nunc Maxisorp®) ELISA plate with 100 µL/well of capture antibody in Coating Buffer (dilute as noted on C of A, which is included with the reagent set). Seal the plate and incubate overnight at 4°C.
2. Aspirate wells and wash 3 times with >250 µL/well Wash Buffer*. Allowing time for soaking (~1 minute) during each wash step increases the effectiveness of the washes. Blot plate on absorbent paper to remove any residual buffer.
3. Dilute 1 part 5X concentrated Assay Diluent with 4 parts DI water.* Block wells with 200 µL/well of 1X Assay Diluent. Incubate at room temperature for 1 hour.
4. Optional: Aspirate and wash at least once with Wash Buffer.
5. Using 1X Assay Diluent*, dilute standards as noted on the C of A to prepare the top concentration of the standard. Add 100 µL/well of top standard concentration to the appropriate

Not for further distribution without written consent.

Copyright © 2000-2012 eBioscience, Inc.

Tel: 888.999.1371 or 858.642.2058 • Fax: 858.642.2046 • www.ebioscience.com •
info@ebioscience.com

Enzyme Linked Immunosorbent Assay (ELISA)

Research Use Only

wells. Perform 2-fold serial dilutions of the top standards to make the standard curve for a total of 8 points. Add 100 µL/well of your samples to the appropriate wells. Seal the plate and incubate at room temperature for 2 hours (or overnight at 4°C for maximal sensitivity).

6. Aspirate/wash as in step 2. Repeat for a total of 3-5 washes**.
7. Add 100 µL/well of detection antibody diluted in 1X Assay Diluent* (dilute as noted on C of A). Seal the plate and incubate at room temperature for 1 hour.
8. Aspirate/wash as in step 2. Repeat for a total of 3-5 washes**.
9. Add 100 µL/well of Avidin-HRP* diluted in 1X Assay Diluent (dilute as noted on C of A). Seal the plate and incubate at room temperature for 30 minutes.
10. Aspirate and wash as in step 2. In this wash step, soak wells in Wash Buffer* for 1 to 2 minutes prior to aspiration. Repeat for a total of 5-7 washes**.
11. Add 100 µL/well of Substrate Solution to each well. Incubate plate at room temperature for 15 minutes.
12. Add 50 µL of Stop Solution to each well.
13. Read plate at 450 nm. If wavelength subtraction is available, subtract the values of 570 nm from those of 450 nm and analyze data.

NOTES:

*** Be certain that no sodium azide is present in the solutions used in this assay, as this inhibits HRP enzyme activity.**

****The number of washes in the protocol was adapted to an automatic plate washer. This can be decreased when using other methods but should be tested empirically. Allowing time for soaking (~ 1 minute) during each wash step increases the effectiveness of the washes.**

Enzyme Linked Immunosorbent Assay (ELISA)

Research Use Only

Quick Guide: Standard Calibration

The following table indicates the protein standard contained in the Ready-SET-Go! is calibrated against NIBSC standards.

Table of Standard Calibration				
Cytokine	ng of eB standard	ng of NIBSC standard	U of NIBSC standard	NIBSC Lot #
hIL-2	1	1.1	14.6	86/564
hIL-4	1	2.2	22	88/656
hIL-5	1	2.2	22	90/586
hIL-6	1	1.7	170	89/548
hIL-8	1	1.8	180	89/520
hIL-10	1	0.8	4	93/722
hIL-12	1	0.8	8	95/544
hIL-17A	1	0.9	9000	01/420
hIFN-g	1	1.1	22	87/586
hTNF-a	1	0.9	36	87/650
mIL-2	1	3.1	310	93/566
mIL-4	1	3	30	91/656
mIL-6	1	8.5	850	93/730
mIFN-g*	1		4.5	Gg02-901-533
mTNF-a	1	1.7	340	88/532

* Mouse IFN-g is calibrated using NIH standard (Lot Gg02-901-533) and is measured in Units (U)

ELISA Troubleshooting Guide

Problem	Possibility	Solution
A. High background	1. Improper and inefficient washing	1. Improve efficiency of washing. Fill plates completely, soak for 1 minute per wash, as directed
	2. Cross contamination from other specimens or positive control	2. Repeat ELISA being careful when washing and pipetting
	3. Contaminated substrate	3. Substrate should be colorless. Replace
	4. Incorrect dilutions, e.g., conjugate concentration was too high	4. Repeat using correct dilutions
B. No signal	1. Improper, low protein binding capacity plates were used	1. Repeat ELISA using recommended high binding capacity plates
	2. Wrong substrate was used	2. Repeat ELISA using the correct substrate
	3. Enzyme inhibitor present in buffers; e.g., sodium azide in the washing buffer and Assay Diluent inhibits peroxidase activity	3. Repeat ELISA making no enzyme inhibitor is present in any buffers.

Not for further distribution without written consent.

Copyright © 2000-2012 eBioscience, Inc.

Tel: 888.999.1371 or 858.642.2058 • Fax: 858.642.2046 • www.ebioscience.com •

info@ebioscience.com

Enzyme Linked Immunosorbent Assay (ELISA)

Research Use Only

	4. Coated capture antibody in Assay Diluent rather than Coating Buffer	4. Repeat ELISA using Coating Buffer contained in the set as the diluent for the capture antibody.
C. Very weak signal	1. Improper and inefficient washing	1. Make sure washing procedure is done correctly, with a soak time.
	2. Incorrect dilutions of standard	2. Follow recommendations of standard preparation exactly as written on the C of A
	3. Insufficient incubation time	3. Repeat ELISA following the protocol carefully for each step
	4. Incorrect storage of reagents	4. Store reagents at the correct temperature as indicated on the Technical Data Sheet. Freezing certain components will severely impact results. Do not re-use the standards.
	5. Wrong filter in ELISA reader was used	5. Use the correct wavelength setting
	6. Wrong plate used	6. Use the recommended Corning Costar 9018 or NUNC Maxisorp flat bottom 96 well plates
D. Variation amongst replicates	1. Improper and inefficient washing	1. Make sure washing procedure is done correctly; see C of A. Edge effects can be avoided by moving samples and standards in from the edge of the plate.
	2. Poor mixing of samples	2. Mix samples and reagents gently and equilibrate to proper temperature
	3. Plates not clean	3. Plates should be wiped on bottom before measuring absorbance
	4. Reagents have expired	4. Order a new Ready-Set-Go ELISA.