

Applications	Reactivity	Sensitivity	MW (kDa)	Source
--------------	------------	-------------	----------	--------

W IP IF-IC F      H Mk      Endogenous      70      Rabbit

**Applications Key:** W=Western Blotting IP=Immunoprecipitation IF-IC=Immunofluorescence (Immunocytochemistry) F=Flow Cytometry

**Reactivity Key:** H=Human Mk=Monkey

Species cross-reactivity is determined by western blot. Species enclosed in parentheses are predicted to react based on 100% sequence homology.

## Protocols

### Flow Cytometry Protocol

#### A. Solutions and Reagents

**NOTE:** Prepare solutions with purified water.

1. **1X Phosphate Buffered Saline (PBS):** Dissolve 8 g NaCl, 0.2 g KCl, 1.44 g Na<sub>2</sub>HPO<sub>4</sub> and 0.24 g KH<sub>2</sub>PO<sub>4</sub> in 800 ml dH<sub>2</sub>O. Adjust the pH to 7.4 with HCl and the volume to 1 L. Store at room temperature.
2. **Formaldehyde** (methanol free).
3. **100% Methanol**
4. **Incubation Buffer:** Dissolve 0.5 g bovine serum albumin (BSA) in 100 ml 1X PBS. Store at 4 °C.

#### B. Fixation

1. Collect cells by centrifugation and aspirate supernatant.
2. Resuspend cells briefly in 0.5–1 ml PBS. Add formaldehyde to a final concentration of 2–4% formaldehyde.
3. Fix for 10 min at 37 °C.
4. Chill tubes on ice for 1 min.
5. For extracellular staining with antibodies that do not require permeabilization, proceed to Section D, Step 1 or store cells in PBS with 0.1% sodium azide at 4 °C; for intracellular staining, proceed to permeabilization (Section C, Step 1).

#### C. Permeabilization

1. Permeabilize cells by adding ice-cold 100% methanol slowly to pre-chilled cells, while gently vortexing, to a final concentration of 90% methanol. Alternatively, to remove fix prior to permeabilization, pellet cells by centrifugation and resuspend in 90% methanol.
2. Incubate 30 min on ice.
3. Proceed with immunostaining (Section D, Step 1) or store cells at –20 °C in 90% methanol.

#### D. Immunostaining

**NOTE:** Account for isotype matched controls for monoclonal antibodies or species matched IgG for polyclonal antibodies. Count cells using a hemocytometer or alternative method.

1. Aliquot 0.5–1x10<sup>6</sup> cells into each assay tube (by volume).
2. Add 2–3 ml Incubation Buffer to each tube and rinse by centrifugation. Repeat.
3. Resuspend cells in 100 µl Incubation Buffer per assay tube.
4. Block in Incubation Buffer for 10 min at room temperature.

5. Add the unconjugated, biotinylated, or fluorochrome-conjugated primary antibody at the appropriate dilution to the assay tubes (see individual antibody datasheet for the appropriate dilution).
6. Incubate for 1 hr at room temperature.
7. Rinse as before in Incubation Buffer by centrifugation.
8. If using a fluorochrome-conjugated primary antibody, resuspend cells in 0.5 ml PBS and analyze on flow cytometer; for unconjugated or biotinylated primary antibodies, proceed to immunostaining (Section D, Step 9).
9. Resuspend cells in fluorochrome-conjugated secondary antibody or fluorochrome-conjugated avidin, diluted in Incubation Buffer at the recommended dilution.
10. Incubate for 30 min at room temperature.
11. Rinse as before in Incubation Buffer by centrifugation.
12. Resuspend cells in 0.5 ml PBS and analyze on flow cytometer; alternatively, for DNA staining, proceed to optional DNA stain (Section E, Step 1).

## E. Optional DNA Stain

1. Resuspend cells in 0.5 ml of DNA dye (e.g. Propidium Iodide (PI)/RNase Staining Solution [#4087](#)).
2. Incubate for at least 5 min at room temperature.
3. Analyze cells in DNA stain on flow cytometer.

## Immunofluorescence General Protocol

**IMPORTANT:** Please refer to the APPLICATIONS section on the front page of product datasheet to determine if this product is validated and approved for use on cultured cell lines (IF-IC), paraffin-embedded samples (IF-P), or frozen tissue sections (IF-F). Please see product datasheet for appropriate antibody dilution and unmasking solution.

## A. Solutions and Reagents

**NOTE:** Prepare solutions with purified water.

1. **10X Phosphate Buffered Saline (PBS):** To prepare 1 L add 80 g sodium chloride (NaCl), 2 g potassium chloride (KCl), 14.4 g sodium phosphate, dibasic (Na<sub>2</sub>HPO<sub>4</sub>) and 2.4 g potassium phosphate, monobasic (KH<sub>2</sub>PO<sub>4</sub>) to 1 L dH<sub>2</sub>O. Adjust pH to 8.0.
2. **Formaldehyde:** 16%, methanol free, [Polysciences, Inc.](#) (cat# 18814), use fresh, store opened vials at 4 °C in dark, dilute in PBS for use.
3. **Blocking Buffer:** (1X PBS / 5% normal goat serum ([#5425](#)) / 0.3% Triton™ X-100): To prepare 25 ml, add 2.5 ml 10X PBS, 1.25 ml normal serum from the same species as the secondary antibody (e.g., normal goat serum, normal donkey serum) and 21.25 ml dH<sub>2</sub>O and mix well. While stirring, add 75 µl Triton™ X-100.
4. **Antibody Dilution Buffer:** (1X PBS / 1% BSA / 0.3% Triton™ X-100): To prepare 40 ml, add 4 ml 10X PBS and 120 µl Triton™ X-100 to 0.4 g BSA. Bring to final volume of 40 ml with dH<sub>2</sub>O and mix well.
5. **Fluorochrome-conjugated secondary antibody NOTE:** When using any primary or fluorochrome-conjugated secondary antibody for the first time, titrate the antibody to determine which dilution allows for the strongest specific signal with the least background for your sample.
6. **Prolong® Gold Anti-Fade Reagent** ([#9071](#)), with DAPI ([#8961](#)).

**Reagents specific to IF-P application:**

1. **Xylene**
2. **Ethanol**, anhydrous denatured, histological grade, 100% and 95%.
3. **Antigen Unmasking:**
  - a. **For Citrate:** 10 mM Sodium Citrate Buffer: To prepare 1 L add 2.94 g sodium citrate trisodium salt dihydrate ( $\text{C}_6\text{H}_5\text{Na}_3\text{O}_7 \cdot 2\text{H}_2\text{O}$ ) to 1 L dH<sub>2</sub>O. Adjust pH to 6.0.
  - b. **For EDTA:** 1 mM EDTA: To prepare 1 L add 0.372 g EDTA ( $\text{C}_{10}\text{H}_{14}\text{N}_2\text{O}_8\text{Na}_2 \cdot 2\text{H}_2\text{O}$ ) to 1 L dH<sub>2</sub>O. Adjust pH to 8.0.

## **B. Specimen Preparation**

### **I. Cultured Cell Lines (IF-IC)**

**NOTE:** Cells should be grown, treated, fixed and stained directly in multi-well plates, chamber slides or on coverslips.

1. Aspirate liquid, then cover cells to a depth of 2–3 mm with 4% formaldehyde in PBS. **NOTE:** Formaldehyde is toxic, use only in fume hood.
2. Allow cells to fix for 15 min at room temperature.
3. Aspirate fixative, rinse three times in PBS for 5 min each.
4. Proceed with Immunostaining (Section C).

### **II. Paraffin Sections (IF-P)**

**NOTE:** Do not allow slides to dry at any time during this process.

1. **Deparaffinization/Rehydration:**
  - a. Incubate sections in three washes of xylene for 5 min each.
  - b. Incubate sections in two washes of 100% ethanol for 10 min each.
  - c. Incubate sections in two washes of 95% ethanol for 10 min each.
  - d. Rinse sections twice in dH<sub>2</sub>O for 5 min each.
2. **Antigen Unmasking:**

**NOTE:** Consult product datasheet for specific recommendation for the unmasking solution.

  - a. **For Citrate:** Bring slides to a boil in 10 mM sodium citrate buffer pH 6.0, then maintain at a sub-boiling temperature for 10 min. Cool slides on bench top for 30 min.
  - b. **For EDTA:** Bring slides to a boil in 1 mM EDTA pH 8.0 followed by 15 min at a sub-boiling temperature. No cooling is necessary.
3. Proceed with Immunostaining (Section C).

### **III. Frozen/Cryostat Sections (IF-F)**

1. For fixed frozen tissue proceed with Immunostaining (Section C).
2. For fresh, unfixed frozen tissue, please fix immediately, as follows:
  - a. Cover sections with 4% formaldehyde in PBS.
  - b. Allow sections to fix for 15 min at room temperature.
  - c. Rinse slides three times in PBS for 5 min each.

- d. Proceed with Immunostaining (Section C).

### C. Immunostaining

**NOTE:** All subsequent incubations should be carried out at room temperature unless otherwise noted in a humid light-tight box or covered dish/plate to prevent drying and fluorochrome fading.

1. Block specimen in Blocking Buffer for 60 min.
2. While blocking, prepare primary antibody by diluting as indicated on datasheet in Antibody Dilution Buffer.
3. Aspirate blocking solution, apply diluted primary antibody.
4. Incubate overnight at 4 °C.
5. Rinse three times in PBS for 5 min each.

**NOTE:** If using primary antibodies directly conjugated with Alexa Fluor® fluorochromes, then skip to (Section C, Step 8).

6. Incubate specimen in fluorochrome-conjugated secondary antibody diluted in Antibody Dilution Buffer for 1–2 hr at room temperature in dark.
7. Rinse in PBS (Section C, Step 5).
8. Coverslip slides with Prolong® Gold Anti-Fade Reagent ([#9071](#)), with DAPI ([#8961](#)).
9. For best results, allow mountant to cure overnight at room temperature. For long-term storage, store slides flat at 4 °C protected from light.

### Immunoprecipitation Protocol / (For Analysis By Western Immunoblotting)

For **shorter assay times** please try our [Immunoprecipitation Protocol Utilizing Magnetic Separation / \(For Analysis By Western Immunoblotting\)](#).

### A. Solutions and Reagents

**NOTE:** Prepare solutions with Milli-Q or equivalently purified water.

1. 1X Phosphate Buffered Saline (PBS)
2. **1X Cell Lysis Buffer:** ([#9803](#)) 20 mM Tris (pH 7.5), 150 mM NaCl, 1 mM EDTA, 1 mM EGTA, 1% Triton X-100, 2.5 mM Sodium pyrophosphate, 1 mM β-glycerophosphate, 1 mM Na<sub>3</sub>VO<sub>4</sub>, 1 µg/ml Leupeptin

**NOTE:** Add 1 mM PMSF immediately prior to use.

3. **Protein A or G Agarose Beads:** (Protein A [#9863](#)) Please prepare according to manufacturer's instructions. Use Protein A for rabbit IgG pull down and Protein G for mouse IgG pull down.
4. **3X SDS Sample Buffer:** ([#7722](#)) 187.5 mM Tris-HCl (pH 6.8 at 25 °C), 6% w/v SDS, 30% glycerol, 150 mM DTT, 0.03% w/v bromophenol blue

### B. Preparing Cell Lysates

1. Aspirate media. Treat cells by adding fresh media containing regulator for desired time.
2. To harvest cells under nondenaturing conditions, remove media and rinse cells once with ice-cold PBS.
3. Remove PBS and add 0.5 ml ice-cold 1X cell lysis buffer to each plate (10 cm) and incubate the plates on ice for 5 minutes.
4. Scrape cells off the plates and transfer to microcentrifuge tubes. Keep on ice.

5. Sonicate samples on ice three times for 5 seconds each.
6. Microcentrifuge for 10 minutes at 14,000 X g, 4 °C, and transfer the supernatant to a new tube. If necessary, lysate can be stored at –80 °C.

### C. Immunoprecipitation

**Optional:** It may be necessary to perform a lysate pre-clearing step to reduce non-specific binding to the Protein A/G agarose beads (See section below).

1. Take 200 µl cell lysate and add primary antibody. Incubate with gentle rocking overnight at 4 °C.
2. Add either protein A or G agarose beads (20 µl of 50% bead slurry). Incubate with gentle rocking for 1–3 hours at 4 °C.
3. Microcentrifuge for 30 seconds at 4 °C. Wash pellet five times with 500 µl of 1X cell lysis buffer. Keep on ice during washes.
4. Resuspend the pellet with 20 µl 3X SDS sample buffer. Vortex, then microcentrifuge for 30 seconds.
5. Heat the sample to 95–100 °C for 2–5 minutes and microcentrifuge for 1 minute at 14,000 X g.
6. Load the sample (15–30 µl) on SDS-PAGE gel (12–15%).
7. Analyze sample by Western blotting (see Western Immunoblotting Protocol: [Western BSA](#), [Western Milk](#)).

### Cell Lysate Pre-Clearing (Optional)

1. Take 200 µl cell lysate and add to either Protein A or G agarose beads (20 µl of 50% bead slurry).
2. Incubate at 4 °C for 30 – 60 minutes.
3. Spin for 10 minutes at 4 °C. Transfer the supernatant to a fresh tube.
4. Proceed to step 1 of Immunoprecipitation.

**NOTE:** For proteins with molecular weights of 50 kDa, we recommend using [Mouse Anti-Rabbit IgG \(Light-Chain Specific\) \(L57A3\) mAb #3677](#) or [Mouse Anti-Rabbit IgG \(Conformation Specific\) \(L27A9\) mAb #3678](#) as a secondary antibody to minimize masking produced by denatured heavy chains. For proteins with molecular weights of 25 kDa, [Mouse Anti-Rabbit IgG \(Conformation Specific\) \(L27A9\) mAb #3678](#) is recommended.

### Western Immunoblotting Protocol (Primary Ab Incubation In BSA)

**For Western blots, incubate membrane with diluted antibody in 5% w/v BSA, 1X TBS, 0.1% Tween-20 at 4 °C with gentle shaking, overnight.**

Products available from Cell Signaling Technology are linked by their respective catalog numbers.

### A. Solutions and Reagents

**NOTE:** Prepare solutions with Milli-Q or equivalently purified water.

1. **1X Phosphate Buffered Saline (PBS).**
2. **1X SDS Sample Buffer:** ([#7722](#), [#7723](#)) 62.5 mM Tris-HCl (pH 6.8 at 25 °C), 2% w/v SDS, 10% glycerol, 50 mM DTT, 0.01% w/v bromophenol blue or phenol red.
3. **Transfer Buffer:** 25 mM Tris base, 0.2 M glycine, 20% methanol (pH 8.5).
4. **10X Tris Buffered Saline (TBS):** ([#9997](#)) To prepare 1 liter of 10X TBS: 24.2 g Tris base, 80 g NaCl; adjust pH to 7.6 with HCl (use at 1X).
5. **Nonfat Dry Milk:** ([#9999](#)) (weight to volume [w/v]).

6. **Blocking Buffer:** 1X TBS, 0.1% Tween-20 with 5% w/v nonfat dry milk; for 150 ml, add 15 ml 10X TBS to 135 ml water, mix. Add 7.5 g nonfat dry milk and mix well. While stirring, add 0.15 ml Tween-20 (100%).
7. **Wash Buffer:** 1X TBS, 0.1% Tween-20 (TBS/T).
8. **Bovine Serum Albumin (BSA):** ([#9998](#)).
9. **Primary Antibody Dilution Buffer:** 1X TBS, 0.1% Tween-20 with 5% BSA; for 20 ml, add 2 ml 10X TBS to 18 ml water, mix. Add 1.0 g BSA and mix well. While stirring, add 20 µl Tween-20 (100%).
10. **Phototope®-HRP Western Blot Detection System:** ([#7071 anti-rabbit](#)) or ([#7072 anti-mouse](#)) Includes biotinylated protein ladder, secondary ([#7074 anti-rabbit](#)) or ([#7076 anti-mouse](#)) antibody conjugated to horseradish peroxidase (HRP), anti-biotin antibody conjugated to HRP, LumiGLO® chemiluminescent reagent and peroxide.
11. **Prestained Protein Marker, Broad Range (Premixed Format):** ([#7720](#)).
12. **Biotinylated Protein Ladder Detection Pack:** ([#7727](#)).
13. **Blotting Membrane:** This protocol has been optimized for nitrocellulose membranes, which CST recommends. PVDF membranes may also be used.

## B. Protein Blotting

A general protocol for sample preparation is described below.

1. Treat cells by adding fresh media containing regulator for desired time.
2. Aspirate media from cultures; wash cells with 1X PBS; aspirate.
3. Lyse cells by adding 1X SDS sample buffer (100 µl per well of 6-well plate or 500 µl per plate of 10 cm diameter plate). Immediately scrape the cells off the plate and transfer the extract to a microcentrifuge tube. Keep on ice.
4. Sonicate for 10–15 seconds for complete cell lysis and to shear DNA (to reduce sample viscosity).
5. Heat a 20 µl sample to 95–100 °C for 5 minutes; cool on ice.
6. Microcentrifuge for 5 minutes.
7. Load 20 µl onto SDS-PAGE gel (10 cm x 10 cm). **NOTE:** CST recommends loading prestained molecular weight markers ([#7720](#), 10 µl/lane) to verify electrotransfer and biotinylated protein ladder ([#7727](#), 10 µl/lane) to determine molecular weights.
8. Electrotransfer to nitrocellulose or PVDF membrane.

## C. Membrane Blocking and Antibody Incubations

**NOTE:** Volumes are for 10 cm x 10 cm (100 cm<sup>2</sup>) of membrane; for different sized membranes, adjust volumes accordingly.

1. (Optional) After transfer, wash nitrocellulose membrane with 25 ml TBS for 5 minutes at room temperature.
2. Incubate membrane in 25 ml of blocking buffer for 1 hour at room temperature.
3. Wash three times for 5 minutes each with 15 ml of TBS/T.
4. Incubate membrane and primary antibody (at the appropriate dilution) in 10 ml primary antibody dilution buffer with gentle agitation overnight at 4 °C.
5. Wash three times for 5 minutes each with 15 ml of TBS/T.

### I. For Unconjugated Primary Antibodies

1. Incubate membrane with **appropriate** HRP-conjugated secondary antibody (1:2000) and HRP-conjugated anti-biotin antibody (1:1000) to detect biotinylated protein markers in 10 ml of blocking buffer with gentle agitation for 1 hour at room temperature.
2. Wash three times for 5 minutes each with 15 ml of TBS/T.

### II. For HRP Conjugated Primary Antibodies

Skip to Detection of Proteins (Step D).

### III. For Biotinylated Primary Antibodies

1. Incubate membrane with HRP-Streptavidin (at the appropriate dilution) in milk for one hour with gentle agitation at room temperature.
2. Wash three times for 5 minutes each with 15 ml of TBS/T.

### D. Detection of Proteins

1. Incubate membrane with 10 ml LumiGLO® (0.5 ml 20X LumiGLO®, 0.5 ml 20X Peroxide and 9.0 ml Milli-Q water) with gentle agitation for 1 minute at room temperature. **NOTE:** LumiGLO® substrate can be further diluted if signal response is too fast.
2. Drain membrane of excess developing solution (do not let dry), wrap in plastic wrap and expose to x-ray film. An initial 10-second exposure should indicate the proper exposure time. **NOTE:** Due to the kinetics of the detection reaction, signal is most intense immediately following LumiGLO® incubation and declines over the following 2 hours.

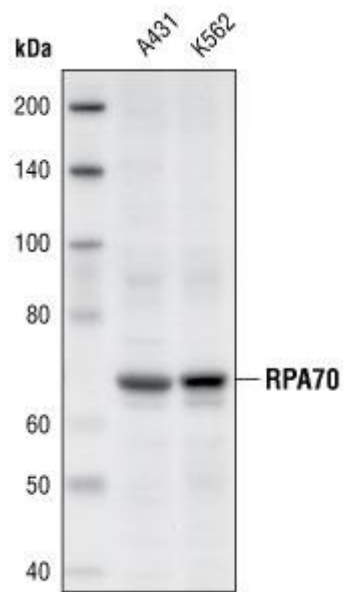
### Specificity / Sensitivity

RPA70 antibody detects endogenous levels of total RPA70 subunit.

### Source / Purification

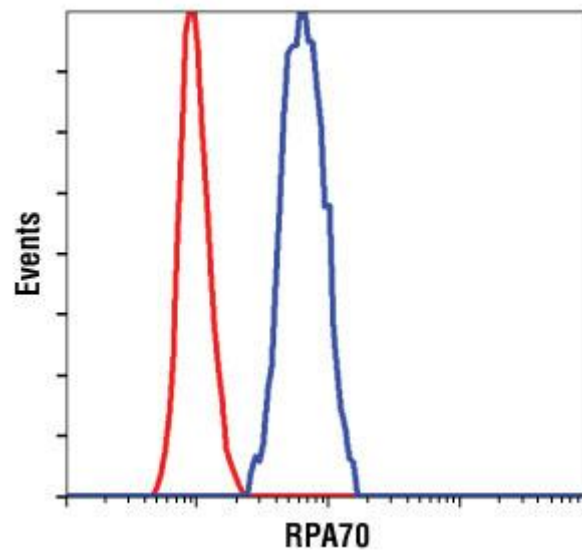
Polyclonal antibodies are produced by immunizing animals with a synthetic peptide corresponding to amino acids near the amino terminus of human RPA70. Antibodies are purified by protein A and peptide affinity chromatography.

### Western Blotting



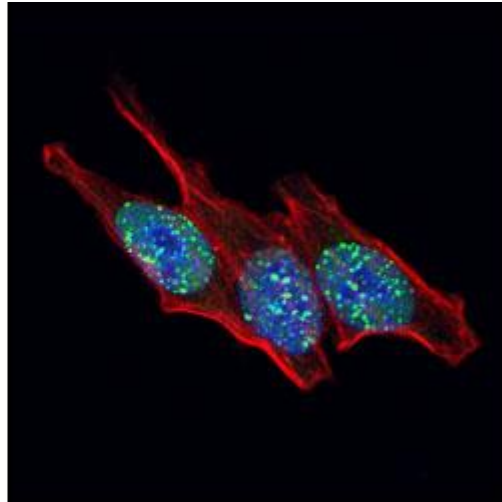
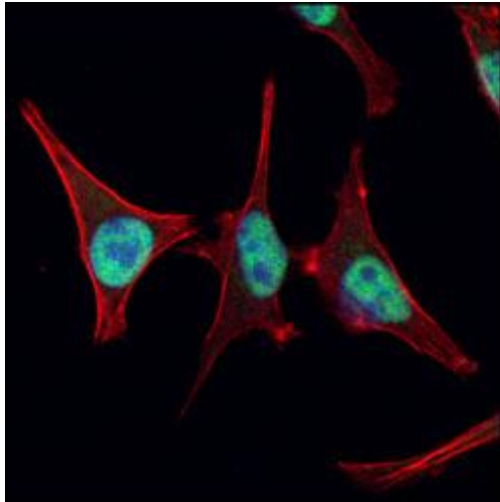
Western blot analysis of extracts from A431 and K562 cells, using RPA70 Antibody.

### Flow Cytometry



Flow cytometric analysis of Jurkat cells, using RPA70 antibody (blue) compared to a nonspecific negative control antibody (red).

### IF-IC



Confocal immunofluorescent images of HeLa cells, untreated (left) or UV-treated (right), labeled with RPA70 Antibody (green) showing translocation to distinct nuclear foci after UV damage. Actin filaments have been labeled with Alexa Fluor® 555 phalloidin. Blue pseudocolor = DRAQ5™ (fluorescent DNA dye).