

PerCP/Cy5.5 anti-human CD194 (CCR4)

Catalog # / Size: 335403 / 25 tests

Clone: TG6/CCR4

Isotype: Mouse IgG2b, κ

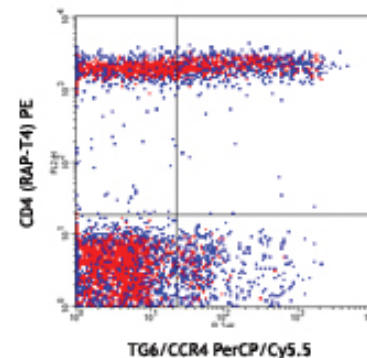
Immunogen: Human CCR4 transfectants

Reactivity: Human

Preparation: The antibody was purified by affinity chromatography, and conjugated with PerCP/Cy5.5 under optimal conditions. The solution is free of unconjugated PerCP/Cy5.5 and unconjugated antibody.

Formulation: Phosphate-buffered solution, pH 7.2, containing 0.09% sodium azide and 0.2% (w/v) BSA (origin USA).

Storage: The antibody solution should be stored undiluted at 4°C and protected from prolonged exposure to light. **Do not freeze.**



Human peripheral blood lymphocytes stained with CD4 (RAP-T4) PE and TG6/CCR4 PerCP/Cy5.5

Applications:

Applications: FC - Quality tested

Recommended Usage: Each lot of this antibody is quality control tested by immunofluorescent staining with flow cytometric analysis. For immunofluorescent staining, the suggested use of this reagent is 5 μ l per million cells or 20 μ l per 100 μ l of whole blood. It is recommended that the reagent be titrated for optimal performance for each application.

* PerCP/Cy5.5 has a maximum absorption of 482 nm and 564 nm and a maximum emission of 690 nm.

Cy3, Cy5, Cy5.5 and Cy7 are subject to proprietary rights of GE Healthcare Bio-Sciences Corp. and Carnegie Mellon University and made and sold under license from GE Healthcare Bio-Sciences Corp. Sale of this product is licensed for research use only.

Application References: 1. Toldi G, *et al.* 2011. *Am. J. Reprod. Immunol.* doi:10.1111/j.1600-0897. (FC) PubMed

Description: CCR4 is a CC chemokine receptor, and it was clone from a human basophilic cell line KU-812 in 1995. (1). CCR4 binds CCL17 and CCL22 and is expressed on stimulated and unstimulated T, and B cells, basophils, monocytes, and NK cells. Human Th2 cells are characterized by the expression of CCR4 and CCR8 (2), and these receptors are regulated differently during Th2 development (3). Human peripheral blood Tregs can be divided into two distinct populations based on the expression of CCR4. Freshly isolated Tregs express CCR4 and presumably represent memory-type Tregs, and CCR4(-) Tregs require anti-CD3 Ab-mediated activation to acquire a regulatory activity. Depletion of CCR4(+) T cells leads to Th1-type polarization of CD4(+) T cells and augmentation of CD8(+) T cell responses to tumor Ags (4). CCR4 and its ligands are important for the recruitment of memory T cells into the skin in various cutaneous immune diseases (5).

Antigen References: 1) Power, *et al.* 1995 *J. Biol. Chem.* 270:19495.
2) Katschke KJ, *et al.* 2001 *Arthritis Rheum* 44:1022.
3) Colantonio L, *et al.* 2002 *Eur. J. Immunol.* 32:1264.
4) Jakubzick C *et al.* 2004 *Am J Pathol* 165:1211
5) Morimoto Y, *et al.* 2005 *J Leukoc Bio* 78:753
6) Baatar J, *et al.* 2007 *J. Immunol.* 178(8):4891.
7) Kusumoto M, *et al.* 2007 *J Interf Cytok Res* 27:901.

Related Products:

Product
PerCP/Cy5.5 Mouse IgG2b, κ Isotype Ctrl
Cell Staining Buffer
RBC Lysis Buffer (10X)
Human TruStain FcX™ (Fc Receptor Blocking Solution)

Clone
MPC-11

Application
FC, ICFC
FC, ICC, ICFC
FC, ICFC
FC, ICC, ICFC



For research use only. Not for diagnostic use. Not for resale. BioLegend will not be held responsible for patent infringement or other violations that may occur with the use of our products.



*These products may be covered by one or more Limited Use Label Licenses (see the BioLegend Catalog or our website, www.biolegend.com/ordering#license). BioLegend products may not be transferred to third parties, resold, modified for resale, or used to manufacture commercial products, reverse engineer functionally similar materials, or to provide a service to third parties without written approval of BioLegend. By use of these products you accept the terms and conditions of all applicable Limited Use Label Licenses. Unless otherwise indicated, these products are for research use only and are not intended for human or animal diagnostic, therapeutic or commercial use.