

FITC anti-human CD209 (DC-SIGN)

Catalog # / Size: 330103 / 25 tests
330104 / 100 tests

Clone: 9E9A8

Isotype: Mouse IgG2a, κ

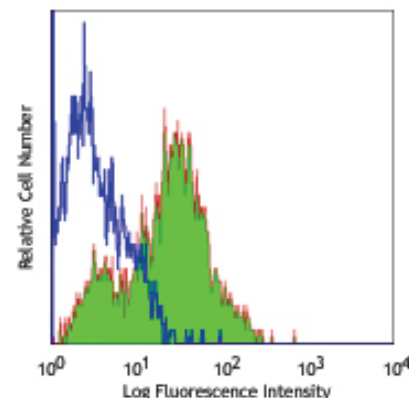
Immunogen: Extracellular domain of human DC-SIGN

Reactivity: Human

Preparation: The antibody was purified by affinity chromatography, and conjugated with FITC under optimal conditions. The solution is free of unconjugated FITC.

Formulation: Phosphate-buffered solution, pH 7.2, containing 0.09% sodium azide and 0.2% (w/v) BSA (origin USA).

Storage: The antibody solution should be stored undiluted at 4°C and protected from prolonged exposure to light. **Do not freeze.**



Human monocytes-derived dendritic cells stained with 9E9A8 FITC

Applications:

Applications: FC - *Quality tested*

Recommended Usage: Each lot of this antibody is quality control tested by immunofluorescent staining with flow cytometric analysis. **Test size products are transitioning from 20 μ l to 5 μ l per test.** Please check your vial or your CoA to find the suggested use of this reagent per million cells in 100 μ l staining volume or per 100 μ l of whole blood. It is recommended that the reagent be titrated for optimal performance for each application. Read more at www.biolegend.com/testsize regarding the test size change.

Application References: 1. Graneli-Piperno A, *et al.* 2005. *J Immunol.* 175:4265.
2. Carrion J, *et al.* 2012. *J. Immunol.* 189:3178. PubMed.

Description: CD209, known as Dendritic Cell-Specific Intercellular adhesion molecule 3 (ICAM-3)-Grabbing Nonintegrin (DC-SIGN), is a 44 kD type II transmembrane glycoprotein and a member of the C-type lectin family. CD209 is expressed on myeloid dendritic cells, placental macrophages, liver and placental endothelial cells. CD209 binds to ICAM-3 (CD50), ICAM-2 (CD102), and Butyrophilin (BTN2A1), and mediates dendritic cell migration and T cell proliferation. Importantly, CD209 is a receptor of HIV-1 and some other viruses (such as West Nile virus, hepatitis C virus, etc), and some bacteria or parasites. It plays a critical role in capturing and internalizing those pathogens. LSP1 (leukocyte-specific protein 1) interacts with the cytoplasmic domain of CD209 and mediates transport of HIV to the proteasome.

Antigen References: 1. Graneli-Piperno A, *et al.* 2005. *J Immunol.* 175:4265.

Related Products: Product

Cell Staining Buffer

RBC Lysis Buffer (10X)

FITC Mouse IgG2a, κ Isotype Ctrl (FC)

Human TruStain FcX™ (Fc Receptor Blocking Solution)

Clone

MOPC-173

Application

FC, ICC, ICFC

FC, ICFC

FC

FC, ICC, ICFC



For research use only. Not for diagnostic use. Not for resale. BioLegend will not be held responsible for patent infringement or other violations that may occur with the use of our products.



*These products may be covered by one or more Limited Use Label Licenses (see the BioLegend Catalog or our website, www.biolegend.com/ordering#license). BioLegend products may not be transferred to third parties, resold, modified for resale, or used to manufacture commercial products, reverse engineer functionally similar materials, or to provide a service to third parties without written approval of BioLegend. By use of these products you accept the terms and conditions of all applicable Limited Use Label Licenses. Unless otherwise indicated, these products are for research use only and are not intended for human or animal diagnostic, therapeutic or commercial use.