

## PE anti-human CD203c (E-NPP3)

**Catalog # / Size:** 324605 / 25 tests  
324606 / 100 tests

**Clone:** NP4D6

**Isotype:** Mouse IgG1,  $\kappa$

**Workshop Number:** HLDA8

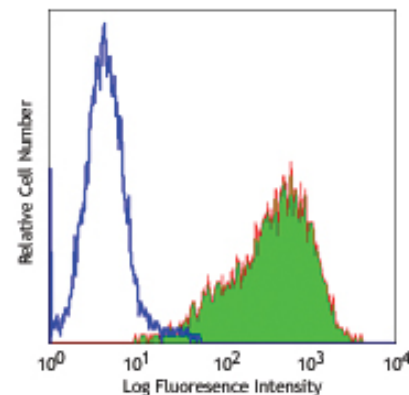
**Immunogen:** HEK-293 cells transfected with human E-NPP3

**Reactivity:** Human

**Preparation:** The antibody was purified by affinity chromatography, and conjugated with PE under optimal conditions. The solution is free of unconjugated PE and unconjugated antibody.

**Formulation:** Phosphate-buffered solution, pH 7.2, containing 0.09% sodium azide and 0.2% (w/v) BSA (origin USA).

**Storage:** The antibody solution should be stored undiluted at 4°C and protected from prolonged exposure to light. **Do not freeze.**



Human basophilic leukemia cell line  
KU-812 stained with NP4D6 PE

## Applications:

**Applications:** FC - Quality tested

**Recommended Usage:** Each lot of this antibody is quality control tested by immunofluorescent staining with flow cytometric analysis. **Test size products are transitioning from 20  $\mu$ l to 5  $\mu$ l per test.** Please check your vial or your CoA to find the suggested use of this reagent per million cells in 100  $\mu$ l staining volume or per 100  $\mu$ l of whole blood. It is recommended that the reagent be titrated for optimal performance for each application. Read more at [www.biolegend.com/testsize](http://www.biolegend.com/testsize) regarding the test size change.

**Application References:**

1. Bühring HJ, *et al.* 1999. *Blood* 94:2343.
2. Bühring HJ, *et al.* 2001. *Blood* 97:3303.
3. Platz IJ, *et al.* 2001. *Int. Arch. Allergy Immunol.* 126:335.
4. Charles N, *et al.* 2010. *Nat. Med.* 16:701. (FC) PubMed
5. Gernez Y, *et al.* 2011. *Int. Arch. Allergy Immunol.* 154:318. (FC) PubMed

**Description:** CD203c, a transmembrane protein and a member of the ectoenzyme family, is involved in the hydrolysis of extracellular oligonucleotides, nucleoside phosphates, and NAD (possesses ATPase and ATP pyrophosphatase activity). The molecular weight of CD203c was observed to be 130 and 150 kD under reducing conditions and 270 kD under non-reducing conditions. CD203c is expressed on basophils and mast cells, and is highly expressed on activated basophils. Secretory glands in endometrium and glioma cells are also positive. CD203c is a multifunctional ectoenzyme involved in the clearance of extracellular nucleotides whose substrates include nucleoside triphosphates, nucleoside diphosphates, cAMP, and NAD.

**Antigen References:**

1. Yano Y, *et al.* 2003. *Int. J. Mol. Med.* 12:763.
2. Andoh K, *et al.* 1999. *Biochim. Biophys. Acta.* 1446:213.

Related Products:	Product	Clone	Application
	Cell Staining Buffer		FC, ICC, ICFC
	PE Mouse IgG1, $\kappa$ Isotype Ctrl (FC)	MOPC-21	FC
	Human TruStain FcX™ (Fc Receptor Blocking Solution)		FC, ICC, ICFC



For research use only. Not for diagnostic use. Not for resale. BioLegend will not be held responsible for patent infringement or other violations that may occur with the use of our products.



\*These products may be covered by one or more Limited Use Label Licenses (see the BioLegend Catalog or our website, [www.biolegend.com/ordering#license](http://www.biolegend.com/ordering#license)). BioLegend products may not be transferred to third parties, resold, modified for resale, or used to manufacture commercial products, reverse engineer functionally similar materials, or to provide a service to third parties without written approval of BioLegend. By use of these products you accept the terms and conditions of all applicable Limited Use Label Licenses. Unless otherwise indicated, these products are for research use only and are not intended for human or animal diagnostic, therapeutic or commercial use.