

PE anti-human CD195 (CCR5)

Catalog # / Size: 321405 / 25 tests
321406 / 100 tests

Clone: T21/8

Isotype: Mouse IgG1, κ

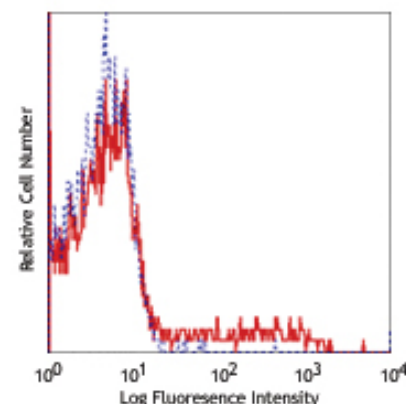
Immunogen: RBL-CCR5 cells

Reactivity: Human

Preparation: The antibody was purified by affinity chromatography, and conjugated with PE under optimal conditions. The solution is free of unconjugated PE and unconjugated antibody.

Formulation: Phosphate-buffered solution, pH 7.2, containing 0.09% sodium azide and 0.2% (w/v) BSA (origin USA).

Storage: The antibody solution should be stored undiluted at 4°C and protected from prolonged exposure to light. **Do not freeze.**



Human peripheral blood lymphocytes stained with T21/8 PE

Applications:

Applications: FC - Quality tested

Recommended Usage: Each lot of this antibody is quality control tested by immunofluorescent staining with flow cytometric analysis. **Test size products are transitioning from 20 μ l to 5 μ l per test.** Please check your vial or your CoA to find the suggested use of this reagent per million cells in 100 μ l staining volume or per 100 μ l of whole blood. It is recommended that the reagent be titrated for optimal performance for each application. Read more at www.biolegend.com/testsize regarding the test size change.

Application Notes: Additional reported applications (for the relevant formats) include: immunofluorescence microscopy¹, and ELISA capture¹.

Application References: 1. Pollok-Kopp B, *et al.* 2003. *J. Biol. Chem.* 278:2190. (IF ELISA Capture)
2. Huttenrauch F, *et al.* 2002. *J. Biol. Chem.* 277:30769. (FC)
3. MondeK, *et al.* 2007. *J. Biol Chem.* 282:36923. PubMed

Description: CD195, also known as CCR5, is a 45 kD G protein-coupled seven transmembrane CC-chemokine receptor. It binds to MIP-1 α , MIP-1 β , and RANTES and is expressed on a subset of T cells and monocytes. CD195 mediates an intracellular signal thought to induce differentiation and proliferation. CCR5 has also been shown to act as a co-receptor for R5 HIV-1 cell entry; modification of CCR5 by sulfation contributes to the efficiency of HIV-1 entry. The T21/8 monoclonal antibody has high affinity to CCR5 N-terminal epitope (Met1-Lys22) and is useful for flow cytometric analysis, immunoprecipitation, immunofluorescence microscopy, and ELISA assay of CCR5 expression.

Antigen References: 1. Samson M, *et al.* 1996. *Biochemistry* 35:3362.
2. Raport CJ, *et al.* 1996. *J. Biol. Chem.* 271:17161.
3. Combadiere C, *et al.* 1996. *J. Leukoc. Biol.* 60:147.
4. Deng H, *et al.* 1996. *Nature* 381:661.

Related Products: **Product**
PE Mouse IgG1, κ Isotype Ctrl
Cell Staining Buffer
Human TruStain FcX™ (Fc Receptor Blocking Solution)

Clone
MOPC-21

Application
FC, ICFC
FC, ICC, ICFC
FC, ICC, ICFC



For research use only. Not for diagnostic use. Not for resale. BioLegend will not be held responsible for patent infringement or other violations that may occur with the use of our products.



*These products may be covered by one or more Limited Use Label Licenses (see the BioLegend Catalog or our website, www.biolegend.com/ordering#license). BioLegend products may not be transferred to third parties, resold, modified for resale, or used to manufacture commercial products, reverse engineer functionally similar materials, or to provide a service to third parties without written approval of BioLegend. By use of these products you accept the terms and conditions of all applicable Limited Use Label Licenses. Unless otherwise indicated, these products are for research use only and are not intended for human or animal diagnostic, therapeutic or commercial use.