

## Alexa Fluor® 647 anti-human CD206 (MMR)

**Catalog # / Size:** 321116 / 100 tests

**Clone:** 15-2

**Isotype:** Mouse IgG1,  $\kappa$

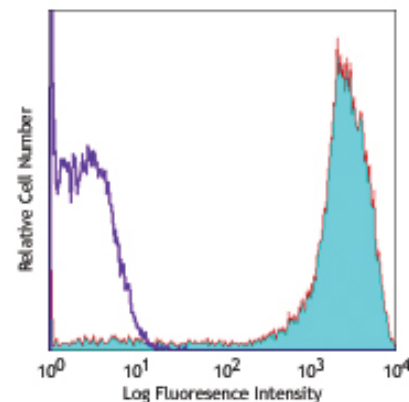
**Immunogen:** Purified human mannose receptor

**Reactivity:** Human

**Preparation:** The antibody was purified by affinity chromatography, and conjugated with Alexa Fluor® 647 under optimal conditions. The solution is free of unconjugated Alexa Fluor® 647.

**Formulation:** Phosphate-buffered solution, pH 7.2, containing 0.09% sodium azide and 0.2% (w/v) BSA (origin USA).

**Storage:** The antibody solution should be stored undiluted at 4°C and protected from prolonged exposure to light. **Do not freeze.**



GM-CSF-stimulated (day-3) human monocytes stained with 15-2 Alexa Fluor® 647

## Applications:

**Applications:** FC - Quality tested

**Recommended Usage:** Each lot of this antibody is quality control tested by immunofluorescent staining with flow cytometric analysis. For immunofluorescent staining, the suggested use of this reagent is 5  $\mu$ l per million cells in 100  $\mu$ l volume or 5  $\mu$ l per 100  $\mu$ l of whole blood. It is recommended that the reagent be titrated for optimal performance for each application.

\* Alexa Fluor® 647 has a maximum emission of 668 nm when it is excited at 633nm / 635nm.

\*\* Alexa Fluor® is a registered trademark of Molecular Probes, Inc. Alexa Fluor® dye antibody conjugates are sold under license from Molecular Probes, Inc. for research use only, except for use in combination with microarrays and high content screening, and are covered by pending and issued patents.

**Application Notes:** The 15-2 antibody blocks the interaction of MMR with its ligand, and inhibits mannose receptor-mediated degradation of t-PA by macrophages. Additional reported applications of this antibody (for the relevant formats) include: Western blotting<sup>1</sup>, blocking of ligand binding<sup>1,2</sup>, immunofluorescence<sup>3</sup>, and immunohistochemical staining of acetone-fixed frozen tissue sections<sup>1</sup>. The LEAF™ purified antibody (Endotoxin <0.1 EU/ $\mu$ g, Azide-Free, 0.2  $\mu$ m filtered) is recommended for functional assays (Cat. No. 321112).

**Application References:**

1. Noorman F, *et al.* 1997. *J. Leukocyte Biol.* 61:63. (WB, IHC, Block)
2. Barrett-Bergshoeff M, *et al.* 1997. *Thromb Haemost.* 77:718. (Block)
3. Kato M, *et al.* 2007. *J. Immunol.* 179:6052. (IF)

**Description:** Macrophage mannose receptor (MMR) is a 162-175 kD type I membrane protein also known as CD206, MRC1, or mannose receptor (MR). It is a pattern recognition receptor (PRR) that belongs to C-type lectin superfamily. MMR is expressed on macrophages, dendritic cells, and hepatic or lymphatic endothelial cells, but not on monocytes. MMR recognizes a range of microbial carbohydrates bearing mannose, fucose, or N-acetyl glucosamine. MMR mediates endocytosis and phagocytosis, induces activation of macrophages and antigen presentation, plays an important role in host defense, and provides a link between innate and adaptive immunity.

**Antigen References:**

1. Mason D, *et al.* Eds. 2002. *Leukocyte Typing VII*. Oxford University Press. p303
2. Wileman TE, *et al.* 1986. *P. Natl. Acad. Sci. USA* 83:2501.
3. Apostolopoulos V and McKenzie IF. 2001. *Curr. Mol. Med.* 1:469.
4. Le Cabec V, *et al.* 2005. *J. Leukocyte Biol.* 77:934.
5. Barrett-Bergshoeff M, *et al.* 1997. *Thromb. Haemostasis* 77:718.

### Related Products:

**Product**  
Alexa Fluor® 647 Mouse IgG1,  $\kappa$  Isotype Ctrl (FC)  
Cell Staining Buffer  
RBC Lysis Buffer (10X)  
Human TruStain FcX™ (Fc Receptor Blocking Solution)

**Clone**  
MOPC-21

**Application**  
FC, IF  
FC, ICC, ICFC  
FC, ICFC  
FC, ICC, ICFC



For research use only. Not for diagnostic use. Not for resale. BioLegend will not be held responsible for patent infringement or other violations that may occur with the use of our products.



\*These products may be covered by one or more Limited Use Label Licenses (see the BioLegend Catalog or our website, [www.biollegend.com/ordering#license](http://www.biollegend.com/ordering#license)). BioLegend products may not be transferred to third parties, resold, modified for resale, or used to manufacture commercial products, reverse engineer functionally similar materials, or to provide a service to third parties without written approval of BioLegend. By use of these products you accept the terms and conditions of all applicable Limited Use Label Licenses. Unless otherwise indicated, these products are for research use only and are not intended for human or animal diagnostic, therapeutic or commercial use.