

Pacific Blue™ anti-human CD195 (CCR5)

Catalog # / Size: 313717 / 25 µg
313718 / 100 µg

Clone: HEK/1/85a

Isotype: Rat IgG2a, κ

Immunogen: CHO cells transfected with human CCR5

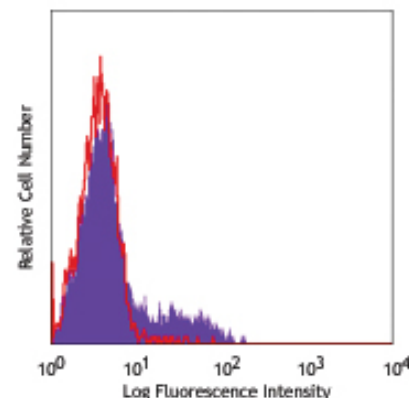
Reactivity: Human

Preparation: The antibody was purified by affinity chromatography, and conjugated with Pacific Blue™ under optimal conditions. The solution is free of unconjugated Pacific Blue™.

Formulation: Phosphate-buffered solution, pH 7.2, containing 0.09% sodium azide.

Concentration: 0.5 mg/ml

Storage: The antibody solution should be stored undiluted at 4°C and protected from prolonged exposure to light. **Do not freeze.**



Human peripheral blood lymphocytes were stained with CD195 (clone HEK/1/85a) Pacific Blue™ (filled purple histogram), or rat IgG2a, κ Pacific Blue™ (open red histogram).

Applications:

Applications: FC - Quality tested

Recommended Usage: Each lot of this antibody is quality control tested by immunofluorescent staining with flow cytometric analysis. For immunofluorescent staining, the suggested use of this reagent is ≤2.0 µg per million cells in 100 µl volume or 100 µl of whole blood. It is recommended that the reagent be titrated for optimal performance for each application.

* Pacific Blue™ has a maximum emission of 455 nm when it is excited at 405 nm. Prior to using Pacific Blue™ conjugate for flow cytometric analysis, please verify your flow cytometer's capability of exciting and detecting the fluorochrome.

** Pacific Blue™ is a registered trademark of Molecular Probes, Inc. Pacific Blue™ dye antibody conjugates are sold under license from Molecular Probes, Inc. for research use only, except for use in combination with microarrays and high content screening, and are covered by pending and issued patents.

Application Notes: Additional reported applications (for the relevant formats) include: immunofluorescence microscopy¹.

Application References: 1. Mueller A, *et al.* 2002. *Blood* 99:785. (IF)

Description: CD195, also known as CCR5, is a 45 kD G protein-coupled seven transmembrane CC-chemokine receptor. It binds to MIP-1α, MIP-1β, and RANTES and is expressed on a subset of T cells and monocytes. CD195 mediates an intracellular signal thought to induce cell differentiation and proliferation. CCR5 has also been shown to act as a co-receptor for R5 HIV-1 cell entry; modification of CCR5 by sulfation contributes to the efficiency of HIV-1 entry. Recent studies have shown CCR5 to play a role in a variety of other human diseases, ranging from infectious and inflammatory diseases to cancer.

Antigen References:

1. Samson M, *et al.* 1996. *Biochemistry* 35:3362.
2. Raport CJ, *et al.* 1996. *J. Biol. Chem.* 271:17161.
3. Combadiere C, *et al.* 1996. *J. Leukoc. Biol.* 60:147.
4. Deng H, *et al.* 1996. *Nature* 381:661.
5. Lai J, *et al.* 2003. *CVI.* 10:1123.
6. Mañes S, *et al.* 2003. *J. Exp. Med.* 198:1381.
7. Vaday GG, *et al.* 2006. *Prostate* 66:124.

Related Products:	Product	Clone	Application
	Pacific Blue™ Rat IgG2a, κ Isotype Ctrl	RTK2758	FC, ICFC
	Cell Staining Buffer		FC, ICC, ICFC
	RBC Lysis Buffer (10X)		FC, ICFC
	Human TruStain FcX™ (Fc Receptor Blocking Solution)		FC, ICC, ICFC



For research use only. Not for diagnostic use. Not for resale. BioLegend will not be held responsible for patent infringement or other violations that may occur with the use of our products.



*These products may be covered by one or more Limited Use Label Licenses (see the BioLegend Catalog or our website, www.biolegend.com/ordering#license). BioLegend products may not be transferred to third parties, resold, modified for resale, or used to manufacture commercial products, reverse engineer functionally similar materials, or to provide a service to third parties without written approval of BioLegend. By use of these products you accept the terms and conditions of all applicable Limited Use Label Licenses. Unless otherwise indicated, these products are for research use only and are not intended for human or animal diagnostic, therapeutic or commercial use.