

LEAF™ Purified anti-human CD180 (RP105)

Catalog # / Size: 312907 / 100 µg

Clone: MHR73-11

Isotype: Mouse IgG1, κ

Immunogen: Human RP105 complexed with mouse MD-1

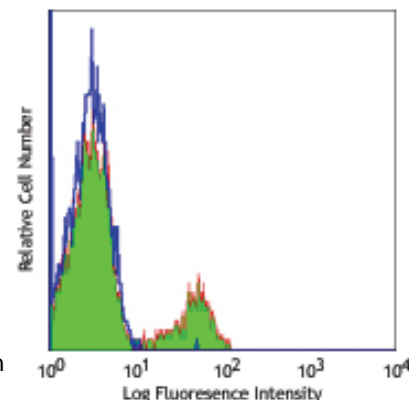
Reactivity: Human, **Cross-Reactivity*:** Baboon, Cynomolgus, Rhesus

Preparation: The LEAF™ (Low Endotoxin, Azide-Free) antibody was purified by affinity chromatography.

Formulation: 0.2 µm filtered in phosphate-buffered solution, pH 7.2, containing no preservative. Endotoxin level is <0.1 EU/µg of the protein (<0.01 ng/µg of the protein) as determined by the LAL test.

Concentration: 1.0 mg/ml

Storage: The antibody solution should be stored undiluted at 4°C. This LEAF™ solution contains no preservative; handle under aseptic conditions.



Human peripheral blood lymphocytes stained with LEAF™ purified MHR73-11, followed by anti-mouse IgG FITC

Applications:

Applications: FC - *Quality tested*
 ICFC, IP, IHC, Stim - *Reported in the literature*

Recommended Usage: Each lot of this antibody is quality control tested by immunofluorescent staining with flow cytometric analysis. For immunofluorescent staining, the suggested use of this reagent is ≤2.0 µg per million cells in 100 µl volume or 100 µl of whole blood. It is recommended that the reagent be titrated for optimal performance for each application.

Application Notes: Additional reported applications (for the relevant formats) include: intracellular staining¹, immunoprecipitation¹, immunohistochemistry¹ of acetone-fixed frozen tissue sections, B cell activation¹, protection from apoptosis induced by radiation or dexamethasone, and induction of the costimulatory molecule CD80 (B7-1)¹. The LEAF™ Purified antibody (Endotoxin <0.1 EU/µg, Azide-Free, 0.2 µm filtered) is recommended for functional assays (Cat. No. 312907).

Application References: 1. Miura Y, *et al.* 1998. *Blood* 92:2815.

Description: CD180, also known as RP105, is a 105 kD member of the toll-like receptor (TLR) family and is expressed on most B cells, monocytes/macrophages and dendritic cells. The TLR family's structural characteristics are critically involved in protein-protein signaling interactions leading to the activation of the innate immune system. Additionally, MD-1, a secretory protein, associates with CD180 (RP105) at the cell surface and this complex, in conjunction with TLR4, recognizes bacterial LPS. The human CD180 (RP105) gene maps to 5q12. The MHR73-11 antibody is able to activate B cells and to protect against irradiation- or dexamethasone-induced apoptosis.

Antigen References: 1. Miura Y, *et al.* 1998. *Blood* 92:2815.

Related Products: Product

LEAF™ Purified anti-human CD14
 LEAF™ Purified Mouse IgG1, κ Isotype Ctrl
 Cell Staining Buffer
 RBC Lysis Buffer (10X)
 LEAF™ Purified anti-human CD282 (TLR2)
 LEAF™ Purified anti-human CD284 (TLR4)

Clone
 M5E2
 MOPC-21

 TL2.1
 HTA125

Application
 Block, FC, IF, IHC, CyTOF®
 FC, ICFC, WB, IP, ICC, IF, FA
 FC, ICC, ICFC
 FC, ICFC
 FC, Block, IHC, IP, WB
 FC, Block, IHC, IF



For research use only. Not for diagnostic use. Not for resale. BioLegend will not be held responsible for patent infringement or other violations that may occur with the use of our products.



*These products may be covered by one or more Limited Use Label Licenses (see the BioLegend Catalog or our website, www.biolegend.com/ordering#license). BioLegend products may not be transferred to third parties, resold, modified for resale, or used to manufacture commercial products, reverse engineer functionally similar materials, or to provide a service to third parties without written approval of BioLegend. By use of these products you accept the terms and conditions of all applicable Limited Use Label Licenses. Unless otherwise indicated, these products are for research use only and are not intended for human or animal diagnostic, therapeutic or commercial use.