

PE anti-human CD180 (RP105)

Catalog # / Size: 312906 / 100 tests

Clone: MHR73-11

Isotype: Mouse IgG1, κ

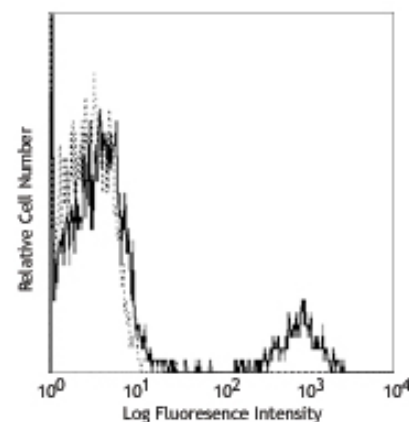
Immunogen: Human RP105 complexed with mouse MD-1

Reactivity: Human, **Cross-Reactivity*:** Baboon, Cynomolgus, Rhesus

Preparation: The antibody was purified by affinity chromatography, and conjugated with PE under optimal conditions. The solution is free of unconjugated PE and unconjugated antibody.

Formulation: Phosphate-buffered solution, pH 7.2, containing 0.09% sodium azide and 0.2% (w/v) BSA (origin USA).

Storage: The antibody solution should be stored undiluted at 4°C and protected from prolonged exposure to light. Do not freeze.



Human peripheral blood lymphocytes stained with MHR73-11 PE

Applications:

Applications: FC, ICFC - Quality tested

Recommended Usage: Each lot of this antibody is quality control tested by immunofluorescent staining with flow cytometric analysis. **Test size products are transitioning from 20 μ l to 5 μ l per test.** Please check your vial or your CoA to find the suggested use of this reagent per million cells in 100 μ l staining volume or per 100 μ l of whole blood. It is recommended that the reagent be titrated for optimal performance for each application. Read more at www.biolegend.com/testsize regarding the test size change.

Application Notes: Additional reported applications (for the relevant formats) include: intracellular staining¹, immunoprecipitation¹, immunohistochemistry¹ of acetone-fixed frozen tissue sections, B cell activation¹, protection from apoptosis induced by radiation or dexamethasone, and induction of the costimulatory molecule CD80 (B7-1)¹. The LEAF™ purified antibody (Endotoxin <0.1 EU/ μ g, Azide-Free, 0.2 μ m filtered) is recommended for functional assays (Cat. No. 312907).

Application References: 1. Miura Y, *et al.* 1998. *Blood* 92:2815.
2. Miura Y, *et al.* 1996. *Genomics* 38:299.

Description: CD180, also known as RP105, is a 105 kD member of the toll-like receptor (TLR) family and is expressed on most B cells, monocytes/macrophages and dendritic cells. The TLR family's structural characteristics are critically involved in protein-protein signaling interactions leading to the activation of the innate immune system. Additionally, MD-1, a secretory protein, associates with CD180 (RP105) at the cell surface and this complex, in conjunction with TLR4, recognizes bacterial LPS. The human CD180 (RP105) gene maps to 5q12. The MHR73-11 antibody is able to activate B cells and to protect against irradiation- or dexamethasone-induced apoptosis.

Antigen References: 1. Miura Y, *et al.* 1998. *Blood* 92:2815.
2. Miura Y, *et al.* 1996. *Genomics* 38:299.

Related Products:

Product	Clone	Application
PE anti-human CD14	M5E2	FC
PE Mouse IgG1, κ Isotype Ctrl	MOPC-21	FC, ICFC
Cell Staining Buffer		FC, ICC, ICFC
RBC Lysis Buffer (10X)		FC, ICFC
PE anti-human CD282 (TLR2)	TL2.1	FC
PE anti-human CD284 (TLR4)	HTA125	FC



For research use only. Not for diagnostic use. Not for resale. BioLegend will not be held responsible for patent infringement or other violations that may occur with the use of our products.



*These products may be covered by one or more Limited Use Label Licenses (see the BioLegend Catalog or our website, www.biolegend.com/ordering#license). BioLegend products may not be transferred to third parties, resold, modified for resale, or used to manufacture commercial products, reverse engineer functionally similar materials, or to provide a service to third parties without written approval of BioLegend. By use of these products you accept the terms and conditions of all applicable Limited Use Label Licenses. Unless otherwise indicated, these products are for research use only and are not intended for human or animal diagnostic, therapeutic or commercial use.