

Product Data Sheet

Purified anti-human CD169 (Sialoadhesin, Siglec-1)

Catalog # / Size: 346002 / 100 µg

Clone: 7-239

Isotype: Mouse IgG1, κ

Immunogen: Human Rhinovirus (HRV14) infected, monocyte derived-DCs

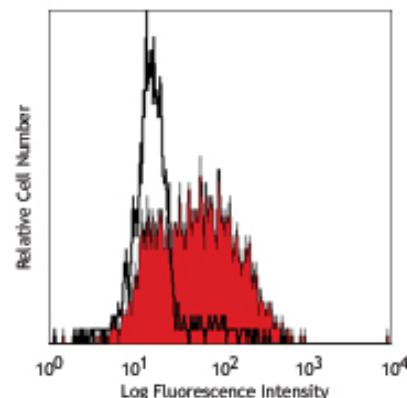
Reactivity: Human

Preparation: The antibody was purified by affinity chromatography.

Formulation: Phosphate-buffered solution, pH 7.2, containing 0.09% sodium azide.

Concentration: 0.5 mg/ml

Storage: The antibody solution should be stored undiluted at 4°C.



IFN-γ + TNF-α; stimulated human monocytes (day-3) stained with 7-239 PE

Applications:

Applications: FC - Quality tested

Recommended Usage: Each lot of this antibody is quality control tested by immunofluorescent staining with flow cytometric analysis. For immunofluorescent staining, the suggested use of this reagent is ≤ 0.5 µg per 10⁶ cells in 100 µl volume. It is recommended that the reagent be titrated for optimal performance for each application.

Application Notes: Additional reported applications (for the relevant formats) include: Western blotting and inhibition of erythrocyte-rosetting with cells expressing CD169.

Application References: 1. Kirchberger S, *et al.* 2005. *J. Immunol.* 175:1145.
2. Schrauf C, *et al.* 2009. *J. Immunol.* 183:4440.

Description: CD169, also known as Siglec-1 and Sialoadhesin (Sn), is a 210 kD type I single membrane-spanning glycoprotein. It is the largest member of the Siglec family, consisting of 1709 amino acids and belonging to the immunoglobulin superfamily. CD169 is expressed by macrophages and dendritic cells. By its affinity to α2,3-linked sialic acid, it is involved in macrophage binding to different cell types such as granulocytes, monocytes, NK, B and T cells. Several CD169 counter receptors, such as CD227 on human breast cancer cells, CD43 on T cells and CD206 on macrophages, have been reported.

Antigen References: 1. Xiong YS, *et al.* 2009. *Clin. Biochem.* 42:1057.
2. Varki A, *et al.* 2009. *Glycoconj J.* 26:231.
3. Rempel H, *et al.* 2008. *PLoS One.* 3:e1967.
4. Crocker PR, *et al.* 2001. *Trends Immunol.* 22:337.
5. Hartnell A, *et al.* 2001. *Blood* 97:288.

Related Products:

Product
Purified Mouse IgG1, κ Isotype Ctrl
Cell Staining Buffer
RBC Lysis Buffer (10X)

Clone
MOPC-21

Application
FC, ICFC, ICC, IF, IHC, IP, WB
FC, ICC, ICFC
FC, ICFC



For research use only. Not for diagnostic use. Not for resale. BioLegend will not be held responsible for patent infringement or other violations that may occur with the use of our products.



*These products may be covered by one or more Limited Use Label Licenses (see the BioLegend Catalog or our website, www.biollegend.com/ordering#license). BioLegend products may not be transferred to third parties, resold, modified for resale, or used to manufacture commercial products, reverse engineer functionally similar materials, or to provide a service to third parties without written approval of BioLegend. By use of these products you accept the terms and conditions of all applicable Limited Use Label Licenses. Unless otherwise indicated, these products are for research use only and are not intended for human or animal diagnostic, therapeutic or commercial use.