

# Product Data Sheet

## PE anti-human CD158f (KIR2DL5)

**Catalog # / Size:** 341303 / 25 tests  
341304 / 100 tests

**Clone:** UP-R1

**Isotype:** Mouse IgG1,  $\kappa$

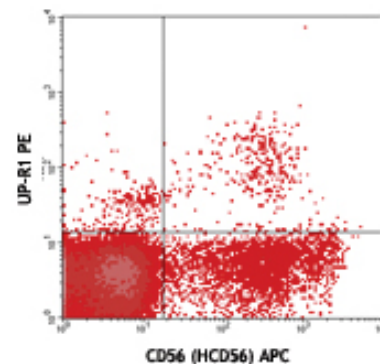
**Immunogen:** Human KIR2DL5-Ig fusion protein

**Reactivity:** Human

**Preparation:** The antibody was purified by affinity chromatography, and conjugated with PE under optimal conditions. The solution is free of unconjugated PE and unconjugated antibody.

**Formulation:** Phosphate-buffered solution, pH 7.2, containing 0.09% sodium azide and 0.2% (w/v) BSA (origin USA).

**Storage:** The antibody solution should be stored undiluted at 4°C and protected from prolonged exposure to light. **Do not freeze.**



Human peripheral blood lymphocytes stained with UP-R1 PE and CD56 (HCD56) APC

## Applications:

**Applications:** FC - Quality tested

**Recommended Usage:** Each lot of this antibody is quality control tested by immunofluorescent staining with flow cytometric analysis. **Test size products are transitioning from 20  $\mu$ l to 5  $\mu$ l per test.** Please check your vial or your CoA to find the suggested use of this reagent per million cells in 100  $\mu$ l staining volume or per 100  $\mu$ l of whole blood. It is recommended that the reagent be titrated for optimal performance for each application. Read more at [www.biolegend.com/testsize](http://www.biolegend.com/testsize) regarding the test size change.

**Application References:** 1. Estefania E, et al. 2007. J. Immunol. 178:4402

**Description:** CD158 molecules, also known as KIRs (killer cell immunoglobulin-like receptors), are a family of transmembrane proteins with either two (KIR2D) or three (KIR3D) Ig-like extracellular domains. Some KIRs with long cytoplasmic domains contain ITIMs and possess inhibitory functions and others with short cytoplasmic region lack ITIM and have activation functions. 14 polymorphic KIR genes have been reported in humans. CD158f is a 60 kD glycoprotein with 2 Ig-like extracellular domains and long cytoplasmic domains. Its expression is highly polymorphic between individuals and mainly expressed on a subset of NK cells and a small population of T cells. HLA class I alleles are the ligands of CD158f.

**Antigen References:** 1. Zola H, et al. eds. 2007. *Leukocyte and Stromal Cell Molecules: The CD Markers*. Wiley-Liss A John Wiley & Sons Inc, Publication  
2. Gonzalez A, et al. 2008. *Tissue Antigens*. 72:11

### Related Products:

**Product**  
PE Mouse IgG1,  $\kappa$  Isotype Ctrl  
Cell Staining Buffer  
RBC Lysis Buffer (10X)  
Human TruStain FcX™ (Fc Receptor Blocking Solution)

**Clone**  
MOPC-21

**Application**  
FC, ICFC  
FC, ICC, ICFC  
FC, ICFC  
FC, ICC, ICFC



For research use only. Not for diagnostic use. Not for resale. BioLegend will not be held responsible for patent infringement or other violations that may occur with the use of our products.



\*These products may be covered by one or more Limited Use Label Licenses (see the BioLegend Catalog or our website, [www.biolegend.com/ordering#license](http://www.biolegend.com/ordering#license)). BioLegend products may not be transferred to third parties, resold, modified for resale, or used to manufacture commercial products, reverse engineer functionally similar materials, or to provide a service to third parties without written approval of BioLegend. By use of these products you accept the terms and conditions of all applicable Limited Use Label Licenses. Unless otherwise indicated, these products are for research use only and are not intended for human or animal diagnostic, therapeutic or commercial use.