

Alexa Fluor® 647 anti-human CD161

Catalog # / Size: 339909 / 25 tests
339910 / 100 tests

Clone: HP-3G10

Isotype: Mouse IgG1, κ

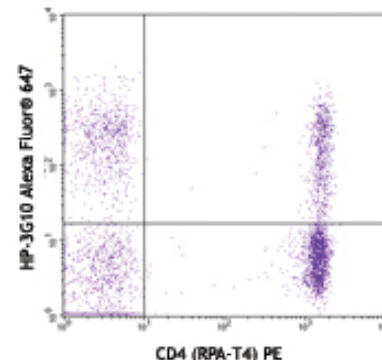
Immunogen: Human NK cells

Reactivity: Human, **Cross-Reactivity:** Baboon, Chimpanzee, Rhesus

Preparation: The antibody was purified by affinity chromatography, and conjugated with Alexa Fluor® 647 under optimal conditions. The solution is free of unconjugated Alexa Fluor® 647.

Formulation: Phosphate-buffered solution, pH 7.2, containing 0.09% sodium azide and 0.2% (w/v) BSA (origin USA).

Storage: The antibody solution should be stored undiluted at 4°C and protected from prolonged exposure to light. **Do not freeze.**



Human peripheral blood lymphocytes stained with HP-3G10 Alexa Fluor® 647 and CD4 (RPA-T4) PE

Applications:

Applications: FC - Quality tested

Recommended Usage: Each lot of this antibody is quality control tested by immunofluorescent staining with flow cytometric analysis. For immunofluorescent staining, the suggested use of this reagent is 5 μ l per million cells or 5 μ l per 100 μ l of whole blood. It is recommended that the reagent be titrated for optimal performance for each application.

* Alexa Fluor® 647 has a maximum emission of 668 nm when it is excited at 633nm / 635nm.

** Alexa Fluor® is a registered trademark of Molecular Probes, Inc. Alexa Fluor® dye antibody conjugates are sold under license from Molecular Probes, Inc. for research use only, except for use in combination with microarrays and high content screening, and are covered by pending and issued patents.

Application Notes: Additional reported applications (for the relevant formats) include: inhibition of cytokine production and Western blotting under nonreducing condition.

Application References:

1. Gumá M, et al. 2004. *Blood* 104:3664.
2. Exley M, et al. 1998. *J. Exp. Med.* 188:867.
3. Marquez C, et al. 1998. *Blood* 91:2760.

Description: CD161 is a type II transmembrane glycoprotein, also known as NKR-P1A, that is expressed as a 40-44 kD homodimer. It is a member of the C-type lectin superfamily. CD161 is expressed on a majority of NK cells, NKT cells, and subsets of peripheral T cells and CD3⁺ thymocytes. It has been reported that Th17 cells are a subpopulation of CD4⁺CD161⁺CCR6⁺ cells. While the biological function of CD161 is not clear, it has been suggested to serve either as a stimulatory receptor or to inhibit NK cell-mediated cytotoxicity and cytokine production. LLT-1 (lectin-like transcript-1, also named as osteoclast inhibitory lectin or CLEC2D) is the ligand of CD161.

Antigen References:

1. Takahashi T, et al. 2006. *J. Immunol.* 176:211.
2. Cosmi L, et al. 2008. *J. Exp. Med.* 205:1903.
3. Aldemir H, et al. 2005. *J. Immunol.* 175:7791.
4. Rosen DB, et al. 2008. *J. Immunol.* 180:6508.

Related Products:

Product
Alexa Fluor® 647 Mouse IgG1, κ Isotype Ctrl (FC)
Cell Staining Buffer
RBC Lysis Buffer (10X)
Human TruStain FcX™ (Fc Receptor Blocking Solution)

Clone
MOPC-21

Application
FC, IF
FC, ICC, ICFC
FC, ICFC
FC, ICC, ICFC



For research use only. Not for diagnostic use. Not for resale. BioLegend will not be held responsible for patent infringement or other violations that may occur with the use of our products.



*These products may be covered by one or more Limited Use Label Licenses (see the BioLegend Catalog or our website, www.biolegend.com/ordering#license). BioLegend products may not be transferred to third parties, resold, modified for resale, or used to manufacture commercial products, reverse engineer functionally similar materials, or to provide a service to third parties without written approval of BioLegend. By use of these products you accept the terms and conditions of all applicable Limited Use Label Licenses. Unless otherwise indicated, these products are for research use only and are not intended for human or animal diagnostic, therapeutic or commercial use.