

Product Data Sheet

PE anti-human CD161

Catalog # / Size: 339903 / 25 tests
339904 / 100 tests

Clone: HP-3G10

Isotype: Mouse IgG1, κ

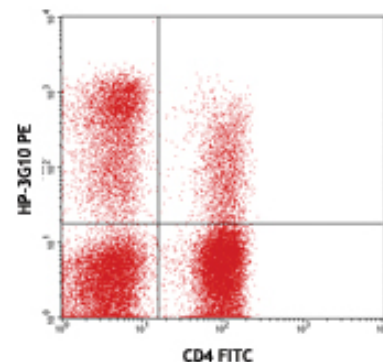
Immunogen: Human NK cells

Reactivity: Human, **Cross-Reactivity:** Baboon, Chimpanzee, Rhesus

Preparation: The antibody was purified by affinity chromatography, and conjugated with PE under optimal conditions. The solution is free of unconjugated PE and unconjugated antibody.

Formulation: Phosphate-buffered solution, pH 7.2, containing 0.09% sodium azide and 0.2% (w/v) BSA (origin USA).

Storage: The antibody solution should be stored undiluted at 4°C and protected from prolonged exposure to light. **Do not freeze.**



Human peripheral blood lymphocytes stained with CD4 FITC and HP-3G10 PE

Applications:

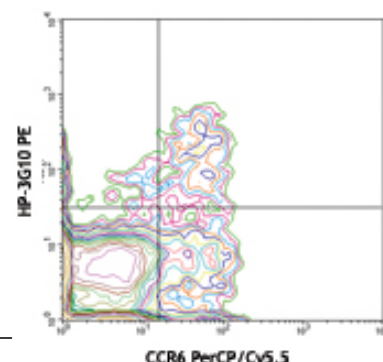
Applications: FC - Quality tested

Recommended Usage: Each lot of this antibody is quality control tested by immunofluorescent staining with flow cytometric analysis. **Test size products are transitioning from 20 μ l to 5 μ l per test.** Please check your vial or your CoA to find the suggested use of this reagent per million cells in 100 μ l staining volume or per 100 μ l of whole blood. It is recommended that the reagent be titrated for optimal performance for each application. Read more at www.biolegend.com/testsize regarding the test size change.

Application Notes: Additional reported applications (for the relevant formats) include: inhibition of cytokine production and Western blotting under nonreducing condition.

Application References:

1. Gumá M, et al. 2004. *Blood* 104:3664.
2. Exley M, et al. 1998. *J. Exp. Med.* 188:867.
3. Marquez C, et al. 1998. *Blood* 91:2760.



Human peripheral blood CD4+ lymphocytes stained with CCR6 PerCP/Cy5.5 and HP-3G10 PE

Description: CD161 is a type II transmembrane glycoprotein, also known as NKR-P1A, that is expressed as a 40-44 kD homodimer. It is a member of the C-type lectin superfamily. CD161 is expressed on a majority of NK cells, NKT cells, and subsets of peripheral T cells and CD3⁺ thymocytes. It has been reported that Th17 cells are a subpopulation of CD4⁺CD161⁺CCR6⁺ cells. While the biological function of CD161 is not clear, it has been suggested to serve either as a stimulatory receptor or to inhibit NK cell-mediated cytotoxicity and cytokine production. LLT-1 (lectin-like transcript-1, also named as osteoclast inhibitory lectin or CLEC2D) is the ligand of CD161.

Antigen References:

1. Takahashi T, et al. 2006. *J. Immunol.* 176:211.
2. Cosmi L, et al. 2008. *J. Exp. Med.* 205:1903.
3. Aldemir H, et al. 2005. *J. Immunol.* 175:7791.
4. Rosen DB, et al. 2008. *J. Immunol.* 180:6508.

Related Products:

Product
PE Mouse IgG1, κ Isotype Ctrl
Cell Staining Buffer
RBC Lysis Buffer (10X)
Human TruStain FcX™ (Fc Receptor Blocking Solution)

Clone
MOPC-21

Application
FC, ICFC
FC, ICC, ICFC
FC, ICFC
FC, ICC, ICFC



For research use only. Not for diagnostic use. Not for resale. BioLegend will not be held responsible for patent infringement or other violations that may occur with the use of our products.



*These products may be covered by one or more Limited Use Label Licenses (see the BioLegend Catalog or our website, www.biolegend.com/ordering#license). BioLegend products may not be transferred to third parties, resold, modified for resale, or used to manufacture commercial products, reverse engineer functionally similar materials, or to provide a service to third parties without written approval of BioLegend. By use of these products you accept the terms and conditions of all applicable Limited Use Label Licenses. Unless otherwise indicated, these products are for research use only and are not intended for human or animal diagnostic, therapeutic or commercial use.