

Biotin anti-human CD163

Catalog # / Size: 333603 / 25 µg
333604 / 100 µg

Clone: GHI/61

Isotype: Mouse IgG1, κ

Workshop Number: VI M38

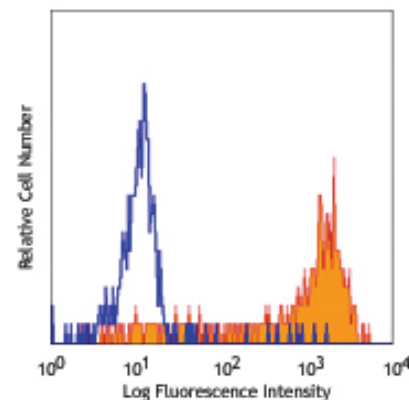
Reactivity: Human, **Cross-Reactivity:** Rhesus

Preparation: The antibody was purified by affinity chromatography, and conjugated with biotin under optimal conditions. The solution is free of unconjugated biotin.

Formulation: Phosphate-buffered solution, pH 7.2, containing 0.09% sodium azide.

Concentration: 0.5 mg/ml

Storage: The antibody solution should be stored undiluted at 4°C. **Do not freeze.**



Human peripheral blood monocytes stained with biotinylated GHI/61, followed by Sav-PE

Applications:

Applications: FC - Quality tested

Recommended Usage: Each lot of this antibody is quality control tested by immunofluorescent staining with flow cytometric analysis. For immunofluorescent staining, the suggested use of this reagent is ≤1.0 µg per million cells in 100 µl volume. It is recommended that the reagent be titrated for optimal performance for each application.

Application Notes: Clone GHI/61 binds to domain 7 of CD163. Additional reported applications (for the relevant formats) include: immunoprecipitation¹.

Application References:

1. Pulford K, *et al.* 1992. *Immunology* 75:588. (IP)
2. Law SK, *et al.* 1993. *Eur. J. Immunol.* 23:2320.
3. Madsen M, *et al.* 2004. *J. Biol. Chem.* 279:51561.
4. Kim WK, *et al.* 2006. *Am. J. Pathol.* 168:822. (FC)

Description: CD163 is a member of the group B scavenger receptor cysteine-rich superfamily, also known as GHI/61, M130, RM3/1, p155, Hemoglobin-Haptoglobin Complex Receptor, or macrophage-associated antigen. It is a 134 kD (non-reduced)/155 kD (reduced) glycoprotein primarily expressed on macrophages, Kuffer cells, monocytes, subset of dendritic cells, and a subset of hematopoietic stem/progenitor cells. CD163 binds to haptoglobin-hemoglobin complex and TWEAK, and plays a role in clearing hemoglobin and regulating cytokine production by macrophages. Membrane CD163 can be cleaved by metalloproteinases (MMP) resulting in soluble form. Elevated serum level of sCD163 has been implicated in many kinds of inflammation diseases.

Antigen References:

1. Roth J, *et al.* 1994 *Transplantation.* 57:127
2. Van den Heuvel MM, *et al.* 1999 *J. Leukoc. Biol.* 66:858
3. Sulahian TH, *et al.* 2000 *Cytokines* 12:1312
4. Fabrick BO, *et al.* 2007 *J. Neuroimmunol.* 187:179

Related Products:

Product
Biotin Mouse IgG1, κ Isotype Ctrl
Cell Staining Buffer
RBC Lysis Buffer (10X)
Human TruStain FcX™ (Fc Receptor Blocking Solution)

Clone
MOPC-21

Application
FC, ICFC
FC, ICC, ICFC
FC, ICFC
FC, ICC, ICFC



For research use only. Not for diagnostic use. Not for resale. BioLegend will not be held responsible for patent infringement or other violations that may occur with the use of our products.



*These products may be covered by one or more Limited Use Label Licenses (see the BioLegend Catalog or our website, www.biolegend.com/ordering#license). BioLegend products may not be transferred to third parties, resold, modified for resale, or used to manufacture commercial products, reverse engineer functionally similar materials, or to provide a service to third parties without written approval of BioLegend. By use of these products you accept the terms and conditions of all applicable Limited Use Label Licenses. Unless otherwise indicated, these products are for research use only and are not intended for human or animal diagnostic, therapeutic or commercial use.