

PE anti-human CD162

Catalog # / Size: 328805 / 25 tests
328806 / 100 tests

Clone: KPL-1

Isotype: Mouse IgG1, κ

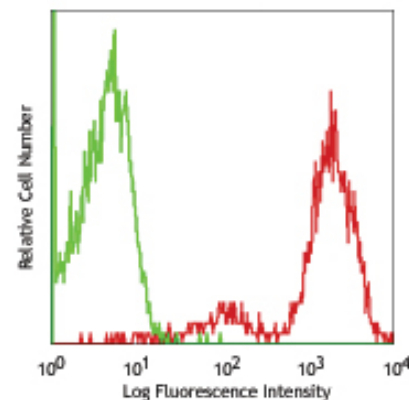
Immunogen: PSGL-1 transfected murine 300.19 pre B-cell line

Reactivity: Human, **Cross-Reactivity:** Cynomolgus

Preparation: The antibody was purified by affinity chromatography, and conjugated with PE under optimal conditions. The solution is free of unconjugated PE and unconjugated antibody.

Formulation: Phosphate-buffered solution, pH 7.2, containing 0.09% sodium azide and 0.2% (w/v) BSA (origin USA).

Storage: The antibody solution should be stored undiluted at 4°C and protected from prolonged exposure to light. **Do not freeze.**



Human peripheral blood lymphocytes stained with KPL-1 PE

Applications:

Applications: FC - Quality tested

Recommended Usage: Each lot of this antibody is quality control tested by immunofluorescent staining with flow cytometric analysis. **Test size products are transitioning from 20 μ l to 5 μ l per test.** Please check your vial or your CoA to find the suggested use of this reagent per million cells in 100 μ l staining volume or per 100 μ l of whole blood. It is recommended that the reagent be titrated for optimal performance for each application. Read more at www.biolegend.com/testsize regarding the test size change.

Application Notes: Additional reported applications (for the relevant formats) include: Western Blot¹, immunoprecipitation², immunohistochemical staining of acetone-fixed frozen tissue sections and formalin-fixed paraffin embedded tissue sections¹, blocks the recognition of PSGL-1 with P- and L-selectin¹.

Application References:

1. Snapp KR, *et al.* 1998. *Blood* 91:154.
2. Snapp KR, *et al.* 1998. *J. Cell Biol.* 142:263.
3. Yoshino N, *et al.* 2000. *Exp. Anim. (Tokyo)* 49:97. (FC)
4. Miyamura K, *et al.* 2011. *J. Gen. Virol.* 92:287. PubMed
5. Tallone T, *et al.* 2011. *J. Cardiovasc Transl Res.* 2:211. PubMed.

Description: CD162, also known as p-selectin glycoprotein ligand-1 (PSGL-1), is a 120 - 220 kD, mucin-like type I transmembrane glycoprotein. CD162 binds to CD62P (P-Selectin), CD62E (E-Selectin) and CD62L (L-Selectin). The interactions between P-selectin and P-selectin glycoprotein ligand-1 (PSGL-1) mediate the earliest "rolling" of leukocytes on the luminal surface of activated endothelium, and the interaction between leukocytes and activated platelets or other leukocytes found at sites of inflammation. CD162 is expressed on neutrophils, monocytes, and most lymphocytes including NK and T cells but PSGL-1 stains B cells at significantly lower levels than other cell types.

Antigen References: 1. Snapp KR, *et al.* 1998. *Blood* 91:154.

Related Products:

Product
Cell Staining Buffer
RBC Lysis Buffer (10X)
PE Mouse IgG1, κ Isotype Ctrl (FC)
Human TruStain FcX™ (Fc Receptor Blocking Solution)

Clone

MOPC-21

Application

FC, ICC, ICFC
FC, ICFC
FC
FC, ICC, ICFC



For research use only. Not for diagnostic use. Not for resale. BioLegend will not be held responsible for patent infringement or other violations that may occur with the use of our products.



*These products may be covered by one or more Limited Use Label Licenses (see the BioLegend Catalog or our website, www.biolegend.com/ordering#license). BioLegend products may not be transferred to third parties, resold, modified for resale, or used to manufacture commercial products, reverse engineer functionally similar materials, or to provide a service to third parties without written approval of BioLegend. By use of these products you accept the terms and conditions of all applicable Limited Use Label Licenses. Unless otherwise indicated, these products are for research use only and are not intended for human or animal diagnostic, therapeutic or commercial use.