

PE anti-human CD163

Catalog # / Size: 326505 / 25 tests
326506 / 100 tests

Clone: RM3/1

Isotype: Mouse IgG1, κ

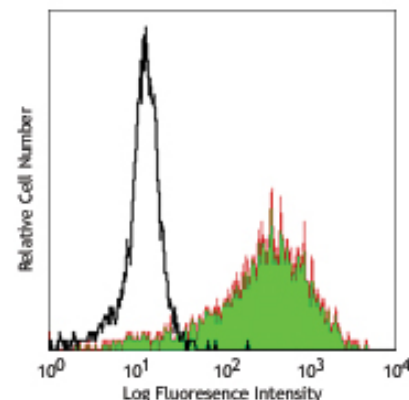
Immunogen: human monocytes

Reactivity: Human

Preparation: The antibody was purified by affinity chromatography, and conjugated with PE under optimal conditions. The solution is free of unconjugated PE and unconjugated antibody.

Formulation: Phosphate-buffered solution, pH 7.2, containing 0.09% sodium azide and 0.2% (w/v) BSA (origin USA).

Storage: The antibody solution should be stored undiluted at 4°C and protected from prolonged exposure to light. **Do not freeze.**



IL-10 stimulated human peripheral blood monocytes stained with RM3/1 PE

Applications:

Applications: FC - Quality tested

Recommended Usage: Each lot of this antibody is quality control tested by immunofluorescent staining with flow cytometric analysis. **Test size products are transitioning from 20 μ l to 5 μ l per test.** Please check your vial or your CoA to find the suggested use of this reagent per million cells in 100 μ l staining volume or per 100 μ l of whole blood. It is recommended that the reagent be titrated for optimal performance for each application. Read more at www.biolegend.com/testsize regarding the test size change.

Application Notes: Clone RM3/1 binds to domain 9 of CD163.

Application References:

- Högger P, *et al.* 1998. *J. Immunol.* 161:1883.
- Zwadlo G, *et al.* 1987. *Exp. Cell Biol.* 55(6):295.
- Buechler C, *et al.* 2000. *J. Leukoc. Biol.* 67:97.
- Puig-Kroger A, *et al.* 2009. *Cancer Res.* 69:9395. PubMed
- Madsen M, *et al.* 2004. *J. Biol. Chem.* 279:51561.

Description: CD163 is a member of the group B scavenger receptor cysteine-rich superfamily, also known as GHI/61, M130, RM3/1, p155, Hemoglobin-Haptoglobin Complex Receptor, or macrophage-associated antigen. It is a 134 kD (non-reduced)/155 kD (reduced) glycoprotein primarily expressed on macrophages, Kuffer cells, monocytes, subset of dendritic cells, and a subset of hematopoietic stem/progenitor cells. CD163 binds to haptoglobin-hemoglobin complex and TWEAK, and plays a role in clearing hemoglobin and regulating cytokine production by macrophages. Membrane CD163 can be cleaved by metalloproteinases (MMP) resulting in soluble form. Elevated serum level of sCD163 has been implicated in many kinds of inflammation diseases.

Antigen References:

- Roth J, *et al.* 1994. *Transplantation.* 57:127.
- Van den Heuvel MM, *et al.* 1999. *J. Leukoc. Biol.* 66:858.
- Sulahian TH, *et al.* 2000. *Cytokines* 12:1312.
- Fabrieck BO, *et al.* 2007. *J. Neuroimmunol.* 187:179.

Related Products:

Product
PE Mouse IgG1, κ Isotype Ctrl
Cell Staining Buffer
RBC Lysis Buffer (10X)
Human TruStain FcX™ (Fc Receptor Blocking Solution)

Clone
MOPC-21

Application
FC, ICFC
FC, ICC, ICFC
FC, ICFC
FC, ICC, ICFC



For research use only. Not for diagnostic use. Not for resale. BioLegend will not be held responsible for patent infringement or other violations that may occur with the use of our products.



*These products may be covered by one or more Limited Use Label Licenses (see the BioLegend Catalog or our website, www.biolegend.com/ordering#license). BioLegend products may not be transferred to third parties, resold, modified for resale, or used to manufacture commercial products, reverse engineer functionally similar materials, or to provide a service to third parties without written approval of BioLegend. By use of these products you accept the terms and conditions of all applicable Limited Use Label Licenses. Unless otherwise indicated, these products are for research use only and are not intended for human or animal diagnostic, therapeutic or commercial use.