

Applications	Reactivity	Sensitivity	MW (kDa)	Isotype
--------------	------------	-------------	----------	---------

W IP	H R	Endogenous	150 kDa	Rabbit IgG
------	-----	------------	---------	------------

**Applications Key:** W=Western Blotting IP=Immunoprecipitation

**Reactivity Key:** H=Human R=Rat

Species cross-reactivity is determined by western blot. Species enclosed in parentheses are predicted to react based on 100% sequence homology.

## Protocols

### Immunoprecipitation Protocol / (For Analysis By Western Immunoblotting)

For **shorter assay times** please try our [Immunoprecipitation Protocol Utilizing Magnetic Separation / \(For Analysis By Western Immunoblotting\)](#).

#### A. Solutions and Reagents

**NOTE:** Prepare solutions with Milli-Q or equivalently purified water.

- 1X Phosphate Buffered Saline (PBS)
- 1X Cell Lysis Buffer:** ([#9803](#)) 20 mM Tris (pH 7.5), 150 mM NaCl, 1 mM EDTA, 1 mM EGTA, 1% Triton X-100, 2.5 mM Sodium pyrophosphate, 1 mM  $\beta$ -glycerophosphate, 1 mM  $\text{Na}_3\text{VO}_4$ , 1  $\mu\text{g/ml}$  Leupeptin

**NOTE:** Add 1 mM PMSF immediately prior to use.

- Protein A or G Agarose Beads:** (Protein A [#9863](#)) Please prepare according to manufacturer's instructions. Use Protein A for rabbit IgG pull down and Protein G for mouse IgG pull down.
- 3X SDS Sample Buffer:** ([#7722](#)) 187.5 mM Tris-HCl (pH 6.8 at 25 °C), 6% w/v SDS, 30% glycerol, 150 mM DTT, 0.03% w/v bromophenol blue

#### B. Preparing Cell Lysates

- Aspirate media. Treat cells by adding fresh media containing regulator for desired time.
- To harvest cells under nondenaturing conditions, remove media and rinse cells once with ice-cold PBS.
- Remove PBS and add 0.5 ml ice-cold 1X cell lysis buffer to each plate (10 cm) and incubate the plates on ice for 5 minutes.
- Scrape cells off the plates and transfer to microcentrifuge tubes. Keep on ice.
- Sonicate samples on ice three times for 5 seconds each.
- Microcentrifuge for 10 minutes at 14,000 X g, 4 °C, and transfer the supernatant to a new tube. If necessary, lysate can be stored at -80 °C.

#### C. Immunoprecipitation

**Optional:** It may be necessary to perform a lysate pre-clearing step to reduce non-specific binding to the Protein A/G agarose beads (See section below).

- Take 200  $\mu\text{l}$  cell lysate and add primary antibody. Incubate with gentle rocking overnight at 4 °C.
- Add either protein A or G agarose beads (20  $\mu\text{l}$  of 50% bead slurry). Incubate with gentle rocking for 1–3 hours at 4 °C.
- Microcentrifuge for 30 seconds at 4 °C. Wash pellet five times with 500  $\mu\text{l}$  of 1X cell lysis buffer. Keep on ice during washes.

4. Resuspend the pellet with 20 µl 3X SDS sample buffer. Vortex, then microcentrifuge for 30 seconds.
5. Heat the sample to 95–100 °C for 2–5 minutes and microcentrifuge for 1 minute at 14,000 X g.
6. Load the sample (15–30 µl) on SDS-PAGE gel (12–15%).
7. Analyze sample by Western blotting (see Western Immunoblotting Protocol: [Western BSA](#), [Western Milk](#)).

### Cell Lysate Pre-Clearing (Optional)

1. Take 200 µl cell lysate and add to either Protein A or G agarose beads (20 µl of 50% bead slurry).
2. Incubate at 4 °C for 30 – 60 minutes.
3. Spin for 10 minutes at 4 °C. Transfer the supernatant to a fresh tube.
4. Proceed to step 1 of Immunoprecipitation.

**NOTE:** For proteins with molecular weights of 50 kDa, we recommend using [Mouse Anti-Rabbit IgG \(Light-Chain Specific\) \(L57A3\) mAb #3677](#) or [Mouse Anti-Rabbit IgG \(Conformation Specific\) \(L27A9\) mAb #3678](#) as a secondary antibody to minimize masking produced by denatured heavy chains. For proteins with molecular weights of 25 kDa, [Mouse Anti-Rabbit IgG \(Conformation Specific\) \(L27A9\) mAb #3678](#) is recommended.

### Western Immunoblotting Protocol (Primary Ab Incubation In Milk)

**For Western blots, incubate membrane with diluted antibody in 5% w/v nonfat dry milk, 1X TBS, 0.1% Tween-20 at 4 °C with gentle shaking, overnight.**

Products available from Cell Signaling Technology are linked by their respective catalog numbers.

### A. Solutions and Reagents

**NOTE:** Prepare solutions with Milli-Q or equivalently purified water.

1. **1X Phosphate Buffered Saline (PBS).**
2. **1X SDS Sample Buffer:** ([#7722](#), [#7723](#)) 62.5 mM Tris-HCl (pH 6.8 at 25 °C), 2% w/v SDS, 10% glycerol, 50 mM DTT, 0.01% w/v bromophenol blue or phenol red.
3. **Transfer Buffer:** 25 mM Tris base, 0.2 M glycine, 20% methanol (pH 8.5).
4. **10X Tris Buffered Saline (TBS):** ([#9997](#)) To prepare 1 liter of 10X TBS: 24.2 g Tris base, 80 g NaCl; adjust pH to 7.6 with HCl (use at 1X).
5. **Nonfat Dry Milk:** ([#9999](#)) (weight to volume [w/v]).
6. **Blocking Buffer:** 1X TBS, 0.1% Tween-20 with 5% w/v nonfat dry milk; for 150 ml, add 15 ml 10X TBS to 135 ml water, mix. Add 7.5 g nonfat dry milk and mix well. While stirring, add 0.15 ml Tween-20 (100%).
7. **Wash Buffer:** 1X TBS, 0.1% Tween-20 (TBS/T).
8. **Primary Antibody Dilution Buffer:** 1X TBS, 0.1% Tween-20 with 5% nonfat dry milk; for 20 ml, add 2 ml 10X TBS to 18 ml water, mix. Add 1.0 g nonfat dry milk and mix well. While stirring, add 20 µl Tween-20 (100%).
9. **Phototope®-HRP Western Blot Detection System:** ([#7071 anti-rabbit](#)) or ([#7072 anti-mouse](#)) Includes biotinylated protein ladder, secondary ([#7074 anti-rabbit](#)) or ([#7076 anti-mouse](#)) antibody conjugated to horseradish peroxidase (HRP), anti-biotin antibody conjugated to HRP, LumiGLO® chemiluminescent reagent and peroxide.
10. **Prestained Protein Marker, Broad Range (Premixed Format):** ([#7720](#)).
11. **Biotinylated Protein Ladder Detection Pack:** ([#7727](#)).

12. **Blotting Membrane:** This protocol has been optimized for nitrocellulose membranes, which CST recommends. PVDF membranes may also be used.

## B. Protein Blotting

A general protocol for sample preparation is described below.

1. Treat cells by adding fresh media containing regulator for desired time.
2. Aspirate media from cultures; wash cells with 1X PBS; aspirate.
3. Lyse cells by adding 1X SDS sample buffer (100 µl per well of 6-well plate or 500 µl per plate of 10 cm diameter plate).  
Immediately scrape the cells off the plate and transfer the extract to a microcentrifuge tube. Keep on ice.
4. Sonicate for 10–15 seconds for complete cell lysis and to shear DNA (to reduce sample viscosity).
5. Heat a 20 µl sample to 95–100 °C for 5 minutes; cool on ice.
6. Microcentrifuge for 5 minutes.
7. Load 20 µl onto SDS-PAGE gel (10 cm x 10 cm).

**NOTE:** CST recommends loading prestained molecular weight marker ([#7720](#), 10 µl/lane) to verify electrotransfer and biotinylated protein ladder ([#7727](#), 10 µl/lane) to determine molecular weights.

1. Electrotransfer to nitrocellulose or PVDF membrane.

## C. Membrane Blocking and Antibody Incubations

**NOTE:** Volumes are for 10 cm x 10 cm (100 cm<sup>2</sup>) of membrane; for different sized membranes, adjust volumes accordingly.

1. (Optional) After transfer, wash nitrocellulose membrane with 25 ml TBS for 5 minutes at room temperature.
2. Incubate membrane in 25 ml of blocking buffer for 1 hour at room temperature.
3. Wash three times for 5 minutes each with 15 ml of TBS/T.
4. Incubate membrane and primary antibody (at the appropriate dilution) in 10 ml primary antibody dilution buffer with gentle agitation overnight at 4 °C.
5. Wash three times for 5 minutes each with 15 ml of TBS/T.
6. Incubate membrane with **appropriate** HRP-conjugated secondary antibody (1:2000) and HRP-conjugated anti-biotin antibody (1:1000) to detect biotinylated protein markers in 10 ml of blocking buffer with gentle agitation for 1 hour at room temperature.
7. Wash three times for 5 minutes each with 15 ml of TBS/T.

## D. Detection of Proteins

1. Incubate membrane with 10 ml LumiGLO® (0.5 ml 20X LumiGLO®, 0.5 ml 20X Peroxide and 9.0 ml Milli-Q water) with gentle agitation for 1 minute at room temperature.

**NOTE:** LumiGLO® substrate can be further diluted if signal response is too fast.

1. Drain membrane of excess developing solution (do not let dry), wrap in plastic wrap and expose to x-ray film. An initial 10-second exposure should indicate the proper exposure time.

**NOTE:** Due to the kinetics of the detection reaction, signal is most intense immediately following LumiGLO® incubation and declines over the following 2 hours.

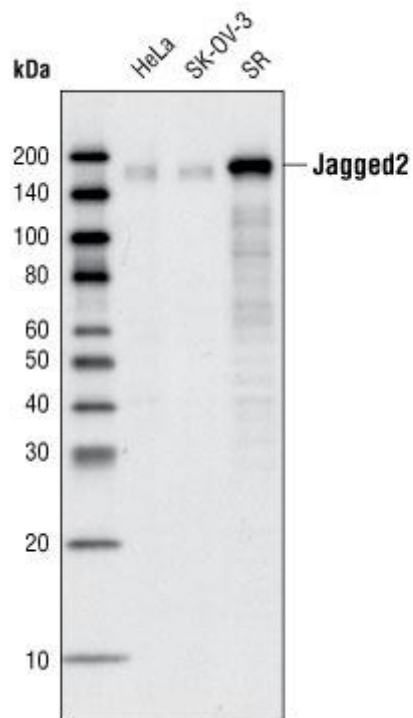
### Specificity / Sensitivity

Jagged2 (C23D2) Rabbit mAb detects endogenous levels of total Jagged2 protein. It does not cross-react with Jagged1.

### Source / Purification

Monoclonal antibody is produced by immunizing animals with a synthetic peptide corresponding to residues surrounding Ala117 of human Jagged2.

### Western Blotting



Western blot analysis of total cell lysates from HeLa, SK-OV-3 and SR cells using Jagged2 (C23D2) Rabbit mAb.