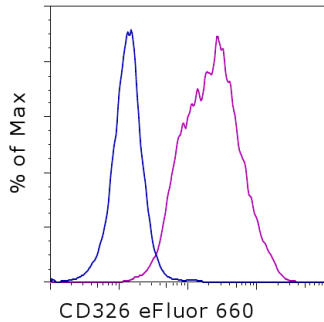


## Anti-Human CD326 (EpCAM) eFluor<sup>®</sup> 660

**Catalog Number:** 50-9326

**Also known as:** Epithelial cell adhesion molecule, KSA, TROP1

**RUO: For Research Use Only. Not for use in diagnostic procedures.**



Staining of the A549 cell line with Mouse IgG1 kappa Isotype Control eFluor<sup>®</sup> 660 (cat. 50-4714) (blue histogram) or Anti-Human CD326 (EpCAM) eFluor<sup>®</sup> 660 (purple histogram). Total viable cells were used for analysis.

### Product Information

**Contents:** Anti-Human CD326 (EpCAM) eFluor<sup>®</sup> 660

**REF** **Catalog Number:** 50-9326

**Clone:** 1B7

**Concentration:** 5  $\mu$ L (0.06  $\mu$ g)/test

**Host/Isotype:** Mouse IgG1, kappa

**Formulation:** aqueous buffer, 0.09% sodium azide, may contain carrier protein/stabilizer

**Temperature Limitation:** Store at 2-8°C. Do not freeze. Light-sensitive material.

**Batch Code:** Refer to vial

**Use By:** Refer to vial

**Contains sodium azide**



### Description

EpCAM (Epithelial cell adhesion molecule, CD326, KSA, TROP1) is a 40 kD cell-surface adhesion molecule participating in homophilic, calcium-independent cell-cell interactions. EpCAM is a type-I transmembrane protein, and is expressed primarily on the basolateral surface of most epithelia. Although normal epithelia express low levels of EpCAM, increased expression has been correlated with increased proliferation and progression to a mesenchymal phenotype. EpCAM has also been used as a diagnostic marker on circulating metastatic carcinoma cells, while cancer cells of non-epithelial origin do not express EpCAM.

### Applications Reported

This 1B7 antibody has been reported for use in flow cytometric analysis.

### Applications Tested

This 1B7 antibody has been pre-titrated and tested by flow cytometric analysis of human A549 cell line. This can be used at 5  $\mu$ L (0.06  $\mu$ g) per test. A test is defined as the amount ( $\mu$ g) of antibody that will stain a cell sample in a final volume of 100  $\mu$ L. Cell number should be determined empirically but can range from  $10^5$  to  $10^8$  cells/test.

**eFluor<sup>®</sup> 660 is a replacement for Alexa Fluor<sup>®</sup> 647. eFluor<sup>®</sup> 660 emits at 659 nm and is excited with the red laser (633 nm). Please make sure that your instrument is capable of detecting this fluorochrome.**

### References

Suzuki K, Nakamura K, Kato K, Hamada H, Tsukamoto T. Exploration of target molecules for prostate cancer gene therapy. Prostate. 2007 Aug 1;67(11):1163-73. (1B7, FC, IHC, PubMed)

Rao CG, Chianese D, Doyle GV, Miller MC, Russell T, Sanders RA Jr, Terstappen LW. Expression of epithelial cell adhesion molecule in carcinoma cells present in blood and primary and metastatic tumors. Int J Oncol. 2005 Jul;27(1):49-57. (PubMed)

Litvinov SV, Bakker HA, Gourevitch MM, Velders MP, Warnaar SO. Evidence for a role of the epithelial glycoprotein

Not for further distribution without written consent.

Copyright © 2000-2012 eBioscience, Inc.

Tel: 888.999.1371 or 858.642.2058 • Fax: 858.642.2046 • www.ebioscience.com •  
info@ebioscience.com

---

## Anti-Human CD326 (EpCAM) eFluor® 660

**Catalog Number:** 50-9326

**Also known as:** Epithelial cell adhesion molecule, KSA, TROP1

**RUO: For Research Use Only. Not for use in diagnostic procedures.**

---

40 (Ep-CAM) in epithelial cell-cell adhesion. Cell Adhes Commun. 1994 Oct;2(5):417-28. (PubMed)

Litvinov SV, Velders MP, Bakker HA, Fleuren GJ, Warnaar SO. Ep-CAM: a human epithelial antigen is a homophilic cell-cell adhesion molecule. J Cell Biol. 1994 Apr;125(2):437-46. (PubMed)

### Related Products

50-4714 Mouse IgG1 K Isotype Control eFluor® 660 (Alexa Fluor® 647 Replacement) (P3.6.2.8.1)