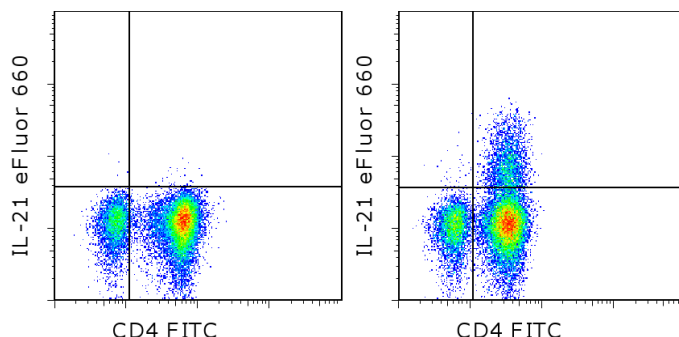


Anti-Human IL-21 eFluor® 660

Catalog Number: 50-7219

Also known as: Interleukin-21, IL21

RUO: For Research Use Only. Not for use in diagnostic procedures.



Intracellular staining of Th17-polarized normal human peripheral blood cells restimulated with monensin alone (left) or PMA/Ionomycin and monensin for 5 hours (right) with Anti-Human CD4 FITC (cat. 11-0049) and Anti-Human IL-21 eFluor® 660. Cells in the lymphocyte gate were used for analysis.

Product Information

Contents: Anti-Human IL-21 eFluor® 660
Catalog Number: 50-7219
Clone: eBio3A3-N2 (3A3-N2)
Concentration: 5 µL (0.125 µg)/test
Host/Isotype: Mouse IgG1, kappa



Formulation: aqueous buffer, 0.09% sodium azide, may contain carrier protein/stabilizer

Temperature Limitation: Store at 2-8°C. Do not freeze. Light-sensitive material.

Batch Code: Refer to vial

Use By: Refer to vial

Description

The monoclonal antibody eBio3A3-N2 reacts with human IL-21, a potent stimulator of NK and cytolytic T cells. IL-21 is a 131 amino acid protein most closely related to IL-2 and IL-15. Expression is found in CD4+ cells upon activation. In addition to its effect on NK cells, IL-21 stimulates proliferation of B-cell stimulated by crosslinking of the CD40 antigen and stimulates the proliferation of bone marrow progenitor cells and the expression of the NK-cell marker CD56 in the presence of IL-15.

Applications Reported

This eBio3A3-N2 (3A3-N2) antibody has been reported for use in intracellular staining followed by flow cytometric analysis.

Applications Tested

This eBio3A3-N2 (3A3-N2) antibody has been pre-titrated and tested by intracellular staining and flow cytometric analysis of restimulated, Th17-polarized normal human peripheral blood cells. This can be used at 5 µL (0.125 µg) per test. A test is defined as the amount (µg) of antibody that will stain a cell sample in a final volume of 100 µL. Cell number should be determined empirically but can range from 10⁵ to 10⁸ cells/test.

Staining for IL-21 has shown donor variability. Stimulation times may vary depending on the donor and should be optimized. Increased staining levels have been observed on Th17-polarized PBMCs. Please contact Technical support at tech@ebioscience.com for additional information.

eFluor® 660 is a replacement for Alexa Fluor® 647. eFluor® 660 emits at 659 nm and is excited with the red laser (633 nm). Please make sure that your instrument is capable of detecting this fluorochrome.

References

Parrish-Novak J, et al. 2002. Interleukin-21 and the IL-21 receptor: novel effectors of NK and T cell responses. J Leukoc Biol. 72(5):856-63.

Not for further distribution without written consent.

Copyright © 2000-2012 eBioscience, Inc.

Tel: 888.999.1371 or 858.642.2058 • Fax: 858.642.2046 • www.ebioscience.com •
info@ebioscience.com

Anti-Human IL-21 eFluor® 660

Catalog Number: 50-7219

Also known as: Interleukin-21, IL21

RUO: For Research Use Only. Not for use in diagnostic procedures.

Parrish-Novak J, et al. 2000. Interleukin 21 and its receptor are involved in NK cell expansion and regulation of lymphocyte function. *Nature*. 408(6808):57-63.

Related Products

11-0049 Anti-Human CD4 FITC (RPA-T4)

50-4714 Mouse IgG1 K Isotype Control eFluor® 660 (P3.6.2.8.1)