

Product Data Sheet

PE anti-human CD141 (Thrombomodulin)

Catalog # / Size: 344103 / 25 tests
344104 / 100 tests

Clone: M80

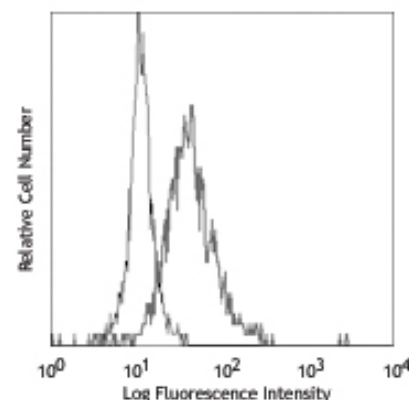
Isotype: Mouse IgG1, κ

Reactivity: Human

Preparation: The antibody was purified by affinity chromatography, and conjugated with PE under optimal conditions. The solution is free of unconjugated PE and unconjugated antibody.

Formulation: Phosphate-buffered solution, pH 7.2, containing 0.09% sodium azide and 0.2% (w/v) BSA (origin USA).

Storage: The antibody solution should be stored undiluted at 4°C and protected from prolonged exposure to light. **Do not freeze.**



Human peripheral blood monocytes stained with M80 PE

Applications:

Applications: FC - Quality tested

Recommended Usage: Each lot of this antibody is quality control tested by immunofluorescent staining with flow cytometric analysis. **Test size products are transitioning from 20 μ l to 5 μ l per test.** Please check your vial or your CoA to find the suggested use of this reagent per million cells in 100 μ l staining volume or per 100 μ l of whole blood. It is recommended that the reagent be titrated for optimal performance for each application. Read more at www.biolegend.com/testsize regarding the test size change.

Description: CD141 is a 75 kD, single chain, type I membrane glycoprotein also known as thrombomodulin, TM, THRM, THBD, and fetomodulin. CD141 is an important cofactor in the protein C anticoagulant system. After binding to its ligand thrombin, CD141 activates protein C, which degrades clotting factors Va and VIIIa, and as a consequence the amount of thrombin is reduced. CD141 is expressed on macrophages, monocytes, a subpopulation of myeloid dendritic cells, vascular endothelial cells, and keratinocytes. Besides anti-coagulation function, CD141 is also involved in embryonic and atherosclerotic plaque development.

- Antigen References:**
1. Suzuki K, *et al.* 1987. *EMBO J.* 6:1891.
 2. Esmon CT, *et al.* 1989. *J. Biol. Chem.* 264:4743.
 3. Delvaeye M, *et al.* 2009. *N. Engl. J. Med.* 361:345.
 4. Shi CS, *et al.* 2008. *Blood* 112:3661.
 5. Chen LC, *et al.* 2009. *J. Infect.* 58:368.

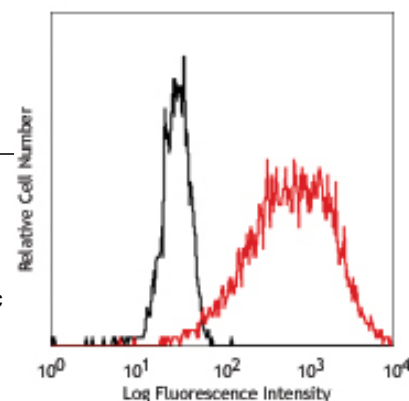
Related Products:

Product
PE Mouse IgG1, κ Isotype Ctrl
Cell Staining Buffer
RBC Lysis Buffer (10X)
Human TruStain FcX™ (Fc Receptor Blocking Solution)

Clone
MOPC-21

Application

FC, ICFC
FC, ICC, ICFC
FC, ICFC
FC, ICC, ICFC



LPS-stimulated (overnight) human peripheral blood mononuclear cells stained with M80 PE (gated on CD14+ cells)



For research use only. Not for diagnostic use. Not for resale. BioLegend will not be held responsible for patent infringement or other violations that may occur with the use of our products.



*These products may be covered by one or more Limited Use Label Licenses (see the BioLegend Catalog or our website, www.biolegend.com/ordering#license). BioLegend products may not be transferred to third parties, resold, modified for resale, or used to manufacture commercial products, reverse engineer functionally similar materials, or to provide a service to third parties without written approval of BioLegend. By use of these products you accept the terms and conditions of all applicable Limited Use Label Licenses. Unless otherwise indicated, these products are for research use only and are not intended for human or animal diagnostic, therapeutic or commercial use.