

# Product Data Sheet

## Alexa Fluor® 647 anti-human CD146 (MUC18, Mel-CAM)

**Catalog # / Size:** 342005 / 25 tests  
342006 / 100 tests

**Clone:** SHM-57

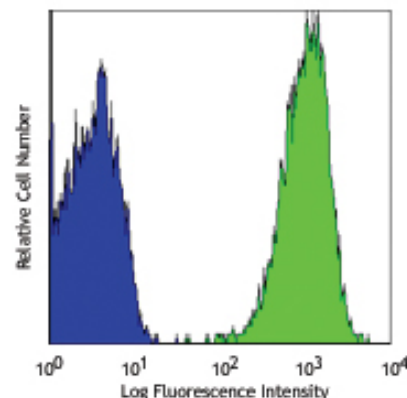
**Isotype:** Mouse IgG2a,  $\kappa$

**Reactivity:** Human

**Preparation:** The antibody was purified by affinity chromatography, and conjugated with Alexa Fluor® 647 under optimal conditions. The solution is free of unconjugated Alexa Fluor® 647.

**Formulation:** Phosphate-buffered solution, pH 7.2, containing 0.09% sodium azide and 0.2% (w/v) BSA (origin USA).

**Storage:** The antibody solution should be stored undiluted at 4°C and protected from prolonged exposure to light. **Do not freeze.**



Human cervical cancer cell line, Hela, stained with SHM-57 Alexa Fluor® 647

## Applications:

**Applications:** FC - Quality tested

**Recommended Usage:** Each lot of this antibody is quality control tested by immunofluorescent staining with flow cytometric analysis. For immunofluorescent staining, the suggested use of this reagent is 5  $\mu$ l per million cells or 5  $\mu$ l per 100  $\mu$ l of whole blood. It is recommended that the reagent be titrated for optimal performance for each application.

\* Alexa Fluor® 647 has a maximum emission of 668 nm when it is excited at 633nm / 635nm.

\*\* Alexa Fluor® is a registered trademark of Molecular Probes, Inc. Alexa Fluor® dye antibody conjugates are sold under license from Molecular Probes, Inc. for research use only, except for use in combination with microarrays and high content screening, and are covered by pending and issued patents.

**Description:** CD146 is a 118 kD integral transmembrane glycoprotein also known as MUC18, S-Endo, MCAM, and Mel-CAM (melanoma cell adhesion molecule). It belongs to the immunoglobulin superfamily. CD146 is expressed on melanoma cells, epithelial cells, endothelial cells, fibroblasts, activated T cells, multipotent mesenchymal stromal cells, and activated keratinocytes. CD146 mediates heterophilic cell adhesion and regulates monocyte transendothelial migration. The ligand of CD146 remains to be identified.

**Antigen References:**

1. Pickl WF, et al. 1997. *J. Immunol.* 158:2107
2. Weninger W, et al. 2000. *J. Invest. Dermatol.* 115:219
3. Sorrentino A, et al. 2008. *Exp. Hematol.* 36:1035
4. Bardin N, et al. 2009. *Arterioscler. Thromb. Vasc. Biol.* 29:746

**Related Products:**

<b>Product</b>	<b>Clone</b>	<b>Application</b>
Alexa Fluor® 647 Mouse IgG2a, $\kappa$ Isotype Ctrl	MOPC-173	FC, ICFC
Cell Staining Buffer		FC, ICC, ICFC
RBC Lysis Buffer (10X)		FC, ICFC
Human TruStain FcX™ (Fc Receptor Blocking Solution)		FC, ICC, ICFC



For research use only. Not for diagnostic use. Not for resale. BioLegend will not be held responsible for patent infringement or other violations that may occur with the use of our products.



\*These products may be covered by one or more Limited Use Label Licenses (see the BioLegend Catalog or our website, [www.biollegend.com/ordering#license](http://www.biollegend.com/ordering#license)). BioLegend products may not be transferred to third parties, resold, modified for resale, or used to manufacture commercial products, reverse engineer functionally similar materials, or to provide a service to third parties without written approval of BioLegend. By use of these products you accept the terms and conditions of all applicable Limited Use Label Licenses. Unless otherwise indicated, these products are for research use only and are not intended for human or animal diagnostic, therapeutic or commercial use.