

## Purified anti-human CD148

**Catalog # / Size:** 328702 / 100 µg

**Clone:** A3

**Isotype:** Mouse IgG1, κ

**Immunogen:** PHA-stimulated human PBMC

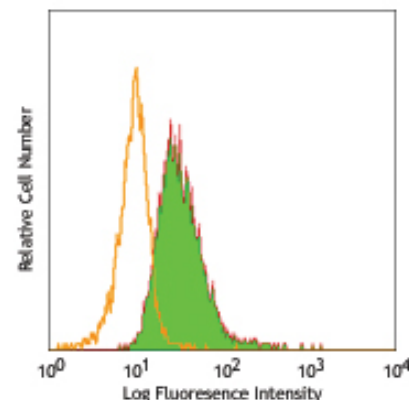
**Reactivity:** Human

**Preparation:** The antibody was purified by affinity chromatography.

**Formulation:** Phosphate-buffered solution, pH 7.2, containing 0.09% sodium azide.

**Concentration:** 0.5 mg/ml

**Storage:** The antibody solution should be stored undiluted at 4°C.



Human peripheral blood granulocytes stained with purified A3, followed by anti-mouse IgG FITC

## Applications:

**Applications:** FC - *Quality tested*  
IF, IHC, IP, WB - *Reported in the literature*

**Recommended Usage:** Each lot of this antibody is quality control tested by immunofluorescent staining with flow cytometric analysis. For immunofluorescent staining, the suggested use of this reagent is  $\leq 1.0$  µg per  $10^6$  cells in 100 µl volume or 100 µl of whole blood. It is recommended that the reagent be titrated for optimal performance for each application.

**Application References:**

1. Tangye SG. 1998. *J. Immunol.* 161:3249. (FC)
2. Tangye SG. 1998. *J. Immunol.* 161:3803.
3. Tangye SG. 1998. *J. Exp. Med.* 188:1691.
4. Autschbach F. 1999. *Tissue Antigens* 54:485.
5. Lin J and Weiss A. 2003. *J. Cell Biol.* 162:673.
6. Whiteford, JR., *et al.* 2011. *Mol Cell Biol.* 22:3609. PubMed.

**Description:** CD148, a receptor-like protein tyrosine phosphatase also known as human protein tyrosine phosphatase-eta (HPTP-eta) or density-enhanced protein tyrosine phosphatase-1 (DEP-1), is involved in signal transduction in leucocytes and is thought to contribute to mechanisms of cellular differentiation. In lymphoid organs, CD148 was found to be widely expressed on B and T cells, granulocytes, macrophages, certain dendritic cells as well as mature thymocytes. The cellular level of CD148 was increased after in vitro activation of peripheral blood leucocytes. CD148 as a leucocyte activation marker and may be involved in the regulation of T cell activation. Leucocytes expressing CD148 are significantly upregulated in inflamed tissues and that a subset of these cells co-expresses the activation marker CD25. In non-lymphoid tissues, CD148 was found to be present on many epithelial cell types with glandular and/or endocrine differentiation as well as on fibrocytes, melanocytes and Schwann cells. Among non-hematopoietic cells, CD148 is expressed by characteristic types of epithelial and non-epithelial cells. Downregulation of CD148 might promote dedifferentiation and autonomous growth of such cells in malignant tumors.

<b>Related Products:</b>	<b>Product</b>	<b>Clone</b>	<b>Application</b>
	Cell Staining Buffer		FC, ICC, ICFC
	Purified Mouse IgG1, κ Isotype Ctrl	MOPC-21	FC, ICFC, ICC, IF, IHC, IP, WB



For research use only. Not for diagnostic use. Not for resale. BioLegend will not be held responsible for patent infringement or other violations that may occur with the use of our products.



\*These products may be covered by one or more Limited Use Label Licenses (see the BioLegend Catalog or our website, [www.biolegend.com/ordering#license](http://www.biolegend.com/ordering#license)). BioLegend products may not be transferred to third parties, resold, modified for resale, or used to manufacture commercial products, reverse engineer functionally similar materials, or to provide a service to third parties without written approval of BioLegend. By use of these products you accept the terms and conditions of all applicable Limited Use Label Licenses. Unless otherwise indicated, these products are for research use only and are not intended for human or animal diagnostic, therapeutic or commercial use.