

## PE/Cy5 anti-human CD137 (4-1BB)

**Catalog # / Size:** 309807 / 25 tests  
309808 / 100 tests

**Clone:** 4B4-1

**Isotype:** Mouse IgG1,  $\kappa$

**Workshop Number:** VI C-7

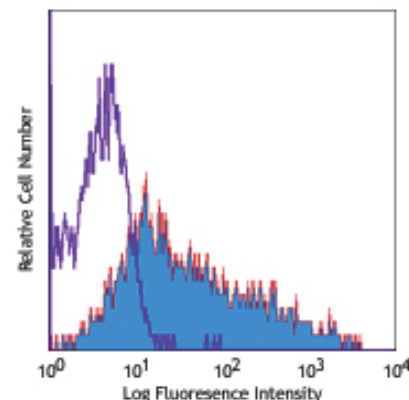
**Immunogen:** Ectodomain of recombinant human 4-1BB fusion protein

**Reactivity:** Human, **Cross-Reactivity:** Chimpanzee, Baboon, Cynomolgus, Rhesus

**Preparation:** The antibody was purified by affinity chromatography, and conjugated with PE/Cy5 under optimal conditions. The solution is free of unconjugated PE/Cy5 and unconjugated antibody.

**Formulation:** Phosphate-buffered solution, pH 7.2, containing 0.09% sodium azide and 0.2% (w/v) BSA (origin USA).

**Storage:** The antibody solution should be stored undiluted at 4°C and protected from prolonged exposure to light. **Do not freeze.**



PHA-stimulated (2 days) human peripheral blood mononuclear cells stained with 4B4-1 PE/CY5

## Applications:

**Applications:** FC - Quality tested

**Recommended Usage:** Each lot of this antibody is quality control tested by immunofluorescent staining with flow cytometric analysis. **Test size products are transitioning from 20  $\mu$ l to 5  $\mu$ l per test.** Please check your vial or your CoA to find the suggested use of this reagent per million cells in 100  $\mu$ l staining volume or per 100  $\mu$ l of whole blood. It is recommended that the reagent be titrated for optimal performance for each application. Read more at [www.biolegend.com/testsize](http://www.biolegend.com/testsize) regarding the test size change.

**Application Notes:** Additional reported applications (for the relevant formats) include: immunoprecipitation<sup>1,4</sup>, inhibition of cytokine production<sup>2,3</sup>, and ELISA. For most successful immunofluorescent staining results, it may be important to maximize signal over background by using a relatively bright fluorochrome-antibody conjugate (Cat. No. 309804) or by using a high sensitivity, three-layer staining technique (e.g., including a biotinylated anti-mouse IgG second step (Cat. No. 405303), followed by SAV-PE (Cat. No. 405204)).

Cy3, Cy5, Cy5.5 and Cy7 are subject to proprietary rights of GE Healthcare Bio-Sciences Corp. and Carnegie Mellon University and made and sold under license from GE Healthcare Bio-Sciences Corp. Sale of this product is licensed for research use only.

**Application References:**

1. Garni-Wagner B, *et al.* 1996. *Cell. Immunol.* 169:91. (IP)
2. Salih HR, *et al.* 2000. *J. Immunol.* 165:2903. (FA)
3. Kienzle G, *et al.* 2000. *Int. Immunol.* 12:73. (FA)
4. Langstein J, *et al.* 1998. *J. Immunol.* 160:2488. (IP)

**Description:** CDw137 is a 39 kD transmembrane protein also known as 4-1BB. It is expressed on activated T cells. CDw137 is a type I membrane protein and a member of the tumor necrosis factor receptor superfamily. CDw137 appears to be important for T cell proliferation and survival, and induces monocyte activation through its interaction with 4-1BB ligand.

**Antigen References:**

1. Gruss H, *et al.* 1995. *Blood* 85:3378.
2. Sica G, *et al.* 2000. *Adv. Exp. Med. Biol.* 465:355.
3. Alderson M, *et al.* 1994. *Eur. J. Immunol.* 24:2219.
4. Schwarz H, *et al.* 1996. *Blood* 87:2839.

Related Products:	Product	Clone	Application
	PE/Cy5 Mouse IgG1, $\kappa$ Isotype Ctrl	MOPC-21	FC, ICFC
	Cell Staining Buffer		FC, ICC, ICFC
	RBC Lysis Buffer (10X)		FC, ICFC
	Human TruStain FcX™ (Fc Receptor Blocking Solution)		FC, ICC, ICFC



For research use only. Not for diagnostic use. Not for resale. BioLegend will not be held responsible for patent infringement or other violations that may occur with the use of our products.



\*These products may be covered by one or more Limited Use Label Licenses (see the BioLegend Catalog or our website, [www.biolegend.com/ordering#license](http://www.biolegend.com/ordering#license)). BioLegend products may not be transferred to third parties, resold, modified for resale, or used to manufacture commercial products, reverse engineer functionally similar materials, or to provide a service to third parties without written approval of BioLegend. By use of these products you accept the terms and conditions of all applicable Limited Use Label Licenses. Unless otherwise indicated, these products are for research use only and are not intended for human or animal diagnostic, therapeutic or commercial use.