

# Product Data Sheet

## Alexa Fluor® 488 anti-human CD147

**Catalog # / Size:** 306207 / 25 tests  
306208 / 100 tests

**Clone:** HIM6

**Isotype:** Mouse IgG1,  $\kappa$

**Workshop Number:** VI N-L109

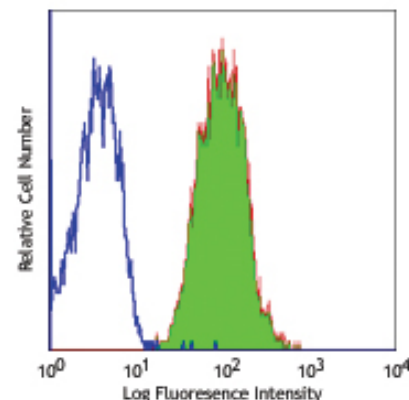
**Immunogen:** Human PBMCs

**Reactivity:** Human, **Cross-Reactivity:** Chimpanzee, Baboon, Capuchin Monkey

**Preparation:** The antibody was purified by affinity chromatography, and conjugated with Alexa Fluor® 488 under optimal conditions. The solution is free of unconjugated Alexa Fluor® 488.

**Formulation:** Phosphate-buffered solution, pH 7.2, containing 0.09% sodium azide and 0.2% (w/v) BSA (origin USA).

**Storage:** The antibody solution should be stored undiluted at 4°C and protected from prolonged exposure to light. **Do not freeze.**



Human peripheral blood lymphocytes stained with HIM6 Alexa Fluor® 488

## Applications:

**Applications:** FC - Quality tested

**Recommended Usage:** Each lot of this antibody is quality control tested by immunofluorescent staining with flow cytometric analysis. For immunofluorescent staining, the suggested use of this reagent is 5  $\mu$ l per million cells or 5  $\mu$ l per 100  $\mu$ l of whole blood. It is recommended that the reagent be titrated for optimal performance for each application.

\* Alexa Fluor® 488 has a maximum emission of 519 nm when it is excited at 488 nm.

\*\* Alexa Fluor® is a registered trademark of Molecular Probes, Inc. Alexa Fluor® dye antibody conjugates are sold under license from Molecular Probes, Inc. for research use only, except for use in combination with microarrays and high content screening, and are covered by pending and issued patents.

**Application Notes:** Additional reported applications (for the relevant formats) include: inhibition of T cell activation<sup>2</sup>, immunohistochemical staining<sup>1,3</sup> of frozen tissue sections and formalin-fixed paraffin-embedded tissue sections, and Western blotting<sup>1</sup>. The LEAF™ Purified antibody (Endotoxin <0.1 EU/ $\mu$ g, Azide-Free, 0.2  $\mu$ m filtered) is recommended for functional assays (Cat. No. 306206).

**Application References:** 1. Menashi S, *et al.* 2003. *Cancer Res.* 63:7575. (WB IHC)  
2. Woodhead VE, *et al.* 2000. *Int. Immunol.* 12:1051. (Block)  
3. Reimers N, *et al.* 2004. *Clin. Cancer Res.* 10:3422. (IHC)

**Description:** CD147, also known as neurothelin or basigin, is a member of the Ig superfamily. It is a 55-65 kD type I transmembrane glycoprotein which is primarily expressed on leukocytes, erythrocytes, platelets, and endothelial cells. CD147 is reported to have a function during embryonal brain development and/or play a role in integrin-mediated adhesion in brain endothelia.

**Antigen References:** 1. Biswas C, *et al.* 1995. *Cancer Res.* 55:434.  
2. Fadool J, *et al.* 1993. *Dev. Dyn.* 196:252.  
3. Felzmann T, *et al.* 1991. *J. Clin. Immunol.* 11:205.

### Related Products:

**Product**  
Cell Staining Buffer  
RBC Lysis Buffer (10X)  
Alexa Fluor® 488 Mouse IgG1,  $\kappa$  Isotype Ctrl (FC)  
Human TruStain FcX™ (Fc Receptor Blocking Solution)

### Clone

MOPC-21

### Application

FC, ICC, ICFC  
FC, ICFC  
FC, IF  
FC, ICC, ICFC



For research use only. Not for diagnostic use. Not for resale. BioLegend will not be held responsible for patent infringement or other violations that may occur with the use of our products.



\*These products may be covered by one or more Limited Use Label Licenses (see the BioLegend Catalog or our website, [www.biollegend.com/ordering#license](http://www.biollegend.com/ordering#license)). BioLegend products may not be transferred to third parties, resold, modified for resale, or used to manufacture commercial products, reverse engineer functionally similar materials, or to provide a service to third parties without written approval of BioLegend. By use of these products you accept the terms and conditions of all applicable Limited Use Label Licenses. Unless otherwise indicated, these products are for research use only and are not intended for human or animal diagnostic, therapeutic or commercial use.