

## LEAF™ Purified anti-human CD147

**Catalog # / Size:** 306205 / 50 µg  
306206 / 500 µg

**Clone:** HIM6

**Isotype:** Mouse IgG1, κ

**Workshop Number:** VI N-L109

**Immunogen:** Human PBMCs

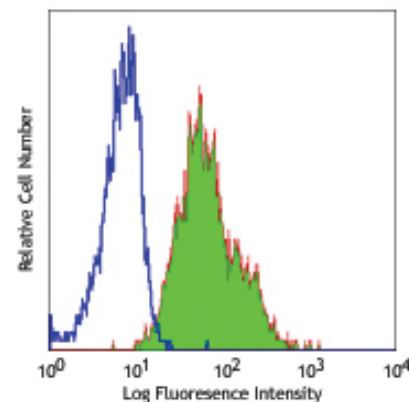
**Reactivity:** Human, **Cross-Reactivity:** Chimpanzee, Baboon, Capuchin Monkey

**Preparation:** The LEAF™ (Low Endotoxin, Azide-Free) antibody was purified by affinity chromatography.

**Formulation:** 0.2 µm filtered in phosphate-buffered solution, pH 7.2, containing no preservative. Endotoxin level is <0.1 EU/µg of the protein (<0.01 ng/µg of the protein) as determined by the LAL test.

**Concentration:** 1.0 mg/ml

**Storage:** The antibody solution should be stored undiluted at 4°C. This LEAF™ solution contains no preservative; handle under aseptic conditions.



Human peripheral blood lymphocytes stained with LEAF™ purified HIM6, followed by anti-mouse IgG FITC

## Applications:

**Applications:** FC - *Quality tested*  
WB, IHC, Block - *Reported in the literature*

**Recommended Usage:** Each lot of this antibody is quality control tested by immunofluorescent staining with flow cytometric analysis. For immunofluorescent staining, the suggested use of this reagent is ≤2.0 µg per million cells in 100 µl volume or 100 µl of whole blood. It is recommended that the reagent be titrated for optimal performance for each application.

**Application Notes:** Additional reported applications (for the relevant formats) include: inhibition of T cell activation<sup>2</sup>, immunohistochemical staining<sup>1,3</sup> of frozen tissue sections and formalin-fixed paraffin-embedded tissue sections, and Western blotting<sup>1</sup>. The LEAF™ Purified antibody (Endotoxin <0.1 EU/µg, Azide-Free, 0.2 µm filtered) is recommended for functional assays (Cat. No. 306206).

**Application References:**

1. Menashi S, *et al.* 2003. *Cancer Res.* 63:7575. (WB IHC)
2. Woodhead VE, *et al.* 2000. *Int. Immunol.* 12:1051. (Block)
3. Reimers N, *et al.* 2004. *Clin. Cancer Res.* 10:3422. (IHC)

**Description:** CD147, also known as neurothelin or basigin, is a member of the Ig superfamily. It is a 55-65 kD type I transmembrane glycoprotein which is primarily expressed on leukocytes, erythrocytes, platelets, and endothelial cells. CD147 is reported to have a function during embryonal brain development and/or play a role in integrin-mediated adhesion in brain endothelia.

**Antigen References:**

1. Biswas C, *et al.* 1995. *Cancer Res.* 55:434.
2. Fadool J, *et al.* 1993. *Dev. Dyn.* 196:252.
3. Felzmann T, *et al.* 1991. *J. Clin. Immunol.* 11:205.

**Related Products:** **Product**  
LEAF™ Purified Mouse IgG1, κ Isotype Ctrl

**Clone**  
MOPC-21

**Application**  
FC, ICFC, WB, IP, ICC, IF, FA



For research use only. Not for diagnostic use. Not for resale. BioLegend will not be held responsible for patent infringement or other violations that may occur with the use of our products.



\*These products may be covered by one or more Limited Use Label Licenses (see the BioLegend Catalog or our website, [www.biolegend.com/ordering#license](http://www.biolegend.com/ordering#license)). BioLegend products may not be transferred to third parties, resold, modified for resale, or used to manufacture commercial products, reverse engineer functionally similar materials, or to provide a service to third parties without written approval of BioLegend. By use of these products you accept the terms and conditions of all applicable Limited Use Label Licenses. Unless otherwise indicated, these products are for research use only and are not intended for human or animal diagnostic, therapeutic or commercial use.