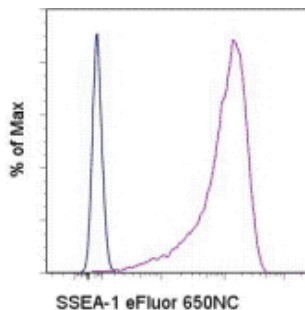


Anti-Human/Mouse SSEA-1 eFluor® 650NC

Catalog Number: 95-8813

Also Known As: stage-specific embryonic antigen-1

RUO: For Research Use Only. Not for use in diagnostic procedures.



Staining of the F9 cell line with staining buffer (autofluorescence) (blue histogram) or Anti-Mouse/human SSEA-1 eFluor® 650NC (purple histogram). Total viable cells were used for analysis.

Product Information

Contents: Anti-Human/Mouse SSEA-1 eFluor® 650NC

REF **Catalog Number:** 95-8813

Clone: eBioMC-480 (MC-480)

Concentration: 5 μ L

Host/Isotype: Mouse IgM

Formulation: aqueous buffer, 0.09% sodium azide, may contain carrier protein/stabilizer

Temperature Limitation: Store at 2-8°C. Light sensitive material. This product is guaranteed for 6 months upon receipt when stored properly.



LOT **Batch Code:** Refer to Vial

Use By: Refer to Vial

Caution, contains Azide

Description

The eBioMC-480 (MC-480) antibody reacts with the stage-specific embryonic antigen-1 (SSEA-1), a carbohydrate epitope expressed upon the surface of early mouse embryos, murine embryonal carcinoma cells (EC), murine embryonic stem cells (ES) and murine & human germ cells (EG). No immunoreactivity is evident with undifferentiated human EC and ES cells. Differentiation of human EC results in an increase in SSEA-1 expression, while in the mouse expression is diminished. SSEA-1 is associated with cell adhesion, migration and differentiation.

Applications Reported

This eBioMC-480 (MC-480) antibody has been reported for use in flow cytometric analysis.

Applications Tested

This eBioMC-480 (MC-480) antibody has been pre-titrated and tested by flow cytometric analysis of mouse F9 cell line. This can be used at 5 μ L per test. A test is defined as the amount of antibody that will stain a cell sample in a final volume of 100 μ L. Cell number should be determined empirically but can range from 10^5 to 10^8 cells/test.

Laser/Filter Recommendation: When using eFluor 650NC, we recommend excitation with the 405nm violet laser with an appropriate filter set, such as the 630 LP dichroic mirror with the 660/40 bandpass filter. The eFluor 650NC can be minimally excited off of the 633 nm laser, and because its peak emission is 650nm, it will require some compensation out of the APC detector. Please contact eBioscience Technical Support for more information.

Buffer Recommendation: Comparison of eFluor® NC conjugated antibody staining in different buffers has demonstrated that optimal performance is seen with the eFluor® NC Flow Cytometry Staining Buffer (cat. 00-3222). For a comparison of staining with different buffers, refer to eFluor® Nanocrystals page.

Fixation Recommendation: When fixing samples that have been stained with nanocrystal reagents, we recommend keeping the total volume at approximately 200 μ L for fixation and the exposure time 30-60 minutes to preserve the optimal fluorescent signal from the nanocrystal reagent.

For answers to additional questions about fixation and other FAQs refer to eFluor® Nanocrystal Frequently Asked Questions.

References

Anjos-Afonso F, Bonnet D. Nonhematopoietic/endothelial SSEA-1+ cells define the most primitive progenitors in the adult murine bone marrow mesenchymal compartment. *Blood*. 2007 Feb 1;109(3):1298-306. (PubMed)

Fenderson BA, De Miguel MP, Pyle AD, Donovan PJ. Staining embryonic stem cells using monoclonal antibodies to stage-specific embryonic

antigens. Methods Mol Biol. 2006;325:207-24. (PubMed)

Solter D, Knowles BB. Monoclonal antibody defining a stage-specific mouse embryonic antigen (SSEA-1). Proc Natl Acad Sci U S A. 1978 Nov;75(11):5565-9. (PubMed)

Related Products

00-4222 Flow Cytometry Staining Buffer

Legal

Under patent number: US 7,939,170 and additional pending patent application(s)

Not for further distribution without written consent.

Copyright © 2000-2012 eBioscience, Inc.

Tel: 888.999.1371 or 858.642.2058 • Fax: 858.642.2046 • www.eBioscience.com • info@eBioscience.com