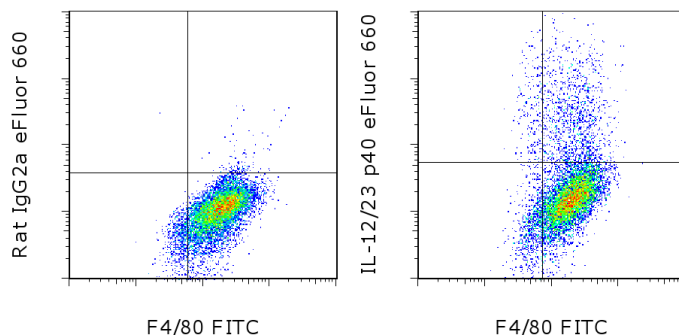


## Anti-Mouse IL-12/IL-23 p40 eFluor® 660 (Alexa Fluor® 647 Replacement)

**Catalog Number:** 50-7123

**Also known as:** Interleukin-12, IL12 / Interleukin-23, IL23 p40

**RUO: For Research Use Only. Not for use in diagnostic procedures.**



Mouse thioglycolate-elicited peritoneal exudate cells were stimulated overnight with LPS and IFN gamma in the presence of Brefeldin A. Cells were surface stained with Anti-Mouse F4/80 Antigen FITC (cat. 11-4801) followed by intracellular staining with 0.06 ug of Rat IgG2a K Isotype Control eFluor® 660 (cat. 50-4321) (left) or 0.06 ug of Anti-Mouse IL-12/IL-23 p40 eFluor® 660 (right) using the IC Fixation and Permeabilization Buffers (cat. 88-8823). Total cells were used for analysis.

### Product Information

**Contents:** Anti-Mouse IL-12/IL-23 p40 eFluor® 660 (Alexa Fluor® 647 Replacement)

**Catalog Number:** 50-7123

**Clone:** C17.8

**Concentration:** 0.2 mg/mL

**Host/Isotype:** Rat IgG2a, kappa

**Formulation:** aqueous buffer, 0.09% sodium azide, may contain carrier protein/stabilizer

**Temperature Limitation:** Store at 2-8°C. Do not freeze. Light-sensitive material.

**Batch Code:** Refer to vial

**Use By:** Refer to vial

**Contains sodium azide**

### Description

The C17.8 antibody reacts with the p40 subunit of IL-12 and IL-23. The C17.8 antibody has been found to neutralize IL-12 and IL-23 bioactivity. For specific neutralization of IL-23 only, please see clone G23-8 (anti-mouse IL-23 p19). IL-12 is a 70 kDa heterodimeric cytokine composed of two covalently linked chains, p40 and p35, and is secreted by activated monocytes, macrophages, and dendritic cells. IL-23 is a heterodimer composed of the disulfide-linked p19 protein and p40 protein, expressed by activated dendritic cells.

### Applications Reported

This C17.8 antibody has been reported for use in intracellular staining followed by flow cytometric analysis.

### Applications Tested

This C17.8 antibody has been tested by intracellular staining and flow cytometric analysis of stimulated mouse cells. This can be used at less than or equal to 0.125 µg per test. A test is defined as the amount (µg) of antibody that will stain a cell sample in a final volume of 100 µL. Cell number should be determined empirically but can range from 10<sup>5</sup> to 10<sup>8</sup> cells/test. It is recommended that the antibody be carefully titrated for optimal performance in the assay of interest.

**eFluor® 660 is a replacement for Alexa Fluor® 647. eFluor® 660 emits at 659 nm and is excited with the red laser (633 nm). Please make sure that your instrument is capable of detecting this fluorochrome.**

### References

Cho D, Lee WJ, Halloran PJ, Trinchieri G, Kim YB. Enhancement of porcine natural killer cell activity by recombinant human and murine IL-12. *Cell Immunol.* 1996 Aug 25;172(1):29-34.

Aragane Y, Riemann H, Bhardwaj RS, Schwarz A, Sawada Y, Yamada H, Luger TA, Kubin M, Trinchieri G, Schwarz T. IL-12 is expressed and released by human keratinocytes and epidermoid carcinoma cell lines. *J Immunol.* 1994

Not for further distribution without written consent.

Copyright © 2000-2012 eBioscience, Inc.

Tel: 888.999.1371 or 858.642.2058 • Fax: 858.642.2046 • [www.ebioscience.com](http://www.ebioscience.com) • [info@ebioscience.com](mailto:info@ebioscience.com)

---

## Anti-Mouse IL-12/IL-23 p40 eFluor® 660 (Alexa Fluor® 647 Replacement)

**Catalog Number:** 50-7123

**Also known as:** Interleukin-12, IL12 / Interleukin-23, IL23 p40

**RUO: For Research Use Only. Not for use in diagnostic procedures.**

---

Dec 15;153(12):5366-72.

### Related Products

11-4801 Anti-Mouse F4/80 Antigen FITC (BM8)

50-4321 Rat IgG2a K Isotype Control eFluor® 660 (eBR2a)

88-8823 Fixation & Permeabilization Buffers