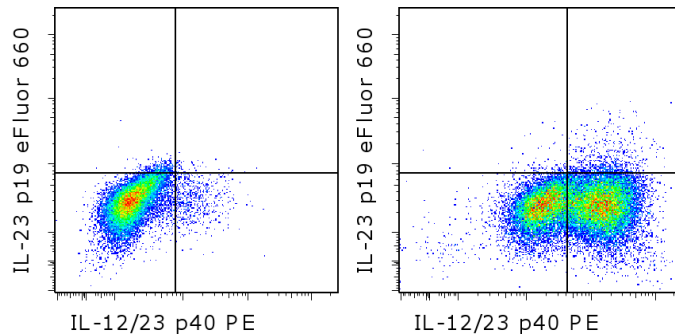


## Anti-Mouse IL-23 p19 eFluor<sup>®</sup> 660

**Catalog Number:** 50-7023

**Also known as:** Interleukin-23 p19

**RUO: For Research Use Only. Not for use in diagnostic procedures.**



Intracellular staining of unstimulated (left) or CpG ODN 2395 and monensin-treated (right) mouse dendritic cells with Anti-Mouse IL-12/23 p40 PE (cat. 12-7123) and Anti-Mouse IL-23 p19 eFluor<sup>®</sup> 660. Total viable cells as determined by Fixable Viability Dye eFluor<sup>®</sup> 780 (cat. 65-0865) were used for analysis.

### Product Information



**Contents:** Anti-Mouse IL-23 p19 eFluor<sup>®</sup> 660

**Catalog Number:** 50-7023

**Clone:** fc23cpg

**Concentration:** 0.2 mg/mL

**Host/Isotype:** Rat IgG1, kappa



**Formulation:** aqueous buffer, 0.09% sodium azide, may contain carrier protein/stabilizer

**Temperature Limitation:** Store at 2-8°C. DO NOT FREEZE. LIGHT-SENSITIVE MATERIAL.



**Batch Code:** Refer to vial



**Use By:** Refer to vial

### Description

This fc23cpg monoclonal antibody reacts with the p19 subunit of mouse IL-23, a heterodimeric cytokine made up of two disulfide-linked subunits, p40 and p19. It is closely related to IL-12, with which it shares the p40 subunit. IL-23 signals through a heterodimeric receptor expressed on activated T cells, macrophages, and dendritic cells. The receptor shares the IL-12R $\beta$ 1 chain with IL-12, while the IL-23R chain is unique to the IL-23 receptor complex. Binding of IL-23 to its receptor activates Jak/STAT pathways similarly to IL-12, but the two cytokines exhibit distinct functions. Unlike IL-12, which induces T-bet and Th1 differentiation, IL-23 signaling results in ROR $\gamma$ t expression and supports CD4<sup>+</sup> T cells with the Th17 phenotype

Dendritic cells and macrophages produce IL-23 in response to TLR2, TLR4, and TLR8 ligands, as well as agonists of the  $\beta$ -glucan receptor, Dectin-1. Our studies suggest donor, kinetics and type of stimulant can result in variation in IL-23 expression levels. Recent publications suggest the p19 subunit may also exist in the absence of association with p40.

### Applications Reported

This fc23cpg antibody has been reported for use by intracellular staining and flow cytometric analysis.

### Applications Tested

This fc23cpg antibody has been tested by intracellular staining and flow cytometric analysis. This can be used at less than or equal to 0.06  $\mu$ g per test. A test is defined as the amount ( $\mu$ g) of antibody that will stain a cell sample in a final volume of 100  $\mu$ l. Cell number should be determined empirically but can range from 10<sup>5</sup> to 10<sup>8</sup> cells/test. It is recommended that the antibody be carefully titrated for optimal performance in the assay of interest.

**eFluor<sup>®</sup> 660 is a replacement for Alexa Fluor<sup>®</sup> 647. eFluor<sup>®</sup> 660 emits at 659 nm and is excited with the red laser (633 nm). Please make sure that your instrument is capable of detecting this fluorochrome.**

### References

Brentano F, Ospelt C, Stanczyk J, Gay RE, Gay S, Kyburz D. Abundant expression of the interleukin (IL)23 subunit

Not for further distribution without written consent.

Copyright © 2000-2012 eBioscience, Inc.

Tel: 888.999.1371 or 858.642.2058 • Fax: 858.642.2046 • www.ebioscience.com •  
info@ebioscience.com

---

## Anti-Mouse IL-23 p19 eFluor® 660

**Catalog Number:** 50-7023

**Also known as:** Interleukin-23 p19

**RUO: For Research Use Only. Not for use in diagnostic procedures.**

---

p19, but low levels of bioactive IL23 in the rheumatoid synovium: differential expression and Toll-like receptor-(TLR) dependent regulation of the IL23 subunits, p19 and p40, in the rheumatoid arthritis. *Ann Rheum Dis.* 2009 Jan; 68(1): 143-50.

Dennehy KM, Willment JA, Williams DL, Brown GD. Reciprocal regulation of IL-23 and IL-12 following co-activation of Dectin-1 and TLR signaling pathways. *Eur J Immunol.* 2009 May;39(5): 1379-86

Hillyen P, Larche MJ, Bowman EP, McClanahan TK, de Waal Malefyt R, Schewitz LP, Giddins G, Feldmann M, Kastelein RA, Brennan FM. Investigating the role of the interleukin-23/-17A axis in rheumatoid arthritis. *Rheumatology.* 2009; 48: 1581-9

Goriely S., Neurath MF., and Goldman M. How microorganisms tip the balance between interleukin-12 family members. *Nat Rev Immunol.* 2008 Jan;8(1):81-6

### Related Products

12-7123 Anti-Mouse IL-12/IL-23 p40 PE (C17.8)

14-8231 Mouse IL-23 Recombinant Protein

50-7823 Anti-Human IL-23 p19 eFluor® 660 (23dcdp)

65-0865 Fixable Viability Dye eFluor® 780

88-7230 Mouse IL-23 ELISA Ready-SET-Go!® (Second generation assay)

88-7234 Mouse IL-23 ELISA Ready-SET-Go!® (Discontinued: Please see 88-7230 (2nd generation assay))

88-8823 Fixation & Permeabilization Buffers

---

Not for further distribution without written consent.

Copyright © 2000-2012 eBioscience, Inc.

Tel: 888.999.1371 or 858.642.2058 • Fax: 858.642.2046 • [www.ebioscience.com](http://www.ebioscience.com) •  
[info@ebioscience.com](mailto:info@ebioscience.com)