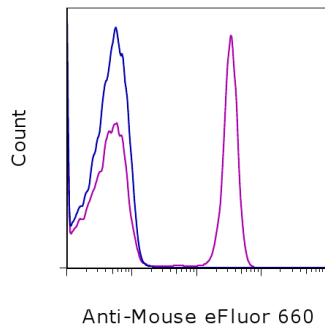


## F(ab')<sub>2</sub> Anti-Mouse IgG eFluor<sup>®</sup> 660

**Catalog Number:** 50-4010

**Also known as:** Goat Anti-Mouse IgG

**RUO: For Research Use Only. Not for use in diagnostic procedures.**



Staining of normal human peripheral blood cells with staining buffer (blue histogram) or Anti-Human CD4 Purified (cat. 14-0049) (purple histogram) followed by F(ab')<sub>2</sub> Anti-Mouse IgG eFluor<sup>®</sup> 660. Cells in the lymphocyte gate were used for analysis (left). Immunohistochemistry of formalin-fixed paraffin embedded human breast cancer tissue stained with 5 ug/mL Anti-Human CD227 (Mucin 1) Purified, followed by 10 ug/mL F(ab')<sub>2</sub> Anti-Mouse IgG eFluor<sup>®</sup> 660. Nuclei are stained with DAPI (right).

### Product Information

**Contents:** F(ab')<sub>2</sub> Anti-Mouse IgG eFluor<sup>®</sup> 660

**REF** **Catalog Number:** 50-4010

**Clone:** polyclonal

**Concentration:** 0.2 mg/mL

**Host/Isotype:** Goat IgG

**Formulation:** aqueous buffer, 0.09% sodium azide, may contain carrier protein/stabilizer

**Temperature Limitation:** Store at 2-8°C. Do not freeze. Light-sensitive material.

**Batch Code:** Refer to vial

**Use By:** Refer to vial

### Description

The goat anti-mouse IgG polyclonal antibody reacts with the heavy and light chains of mouse IgG, with minimal cross reactivity to human, rat, bovine, goat, hamster, and rabbit serum proteins. Reactivity has been shown to all IgG subclasses: IgG1, IgG2a, IgG2b and IgG3. The antibody is a F(ab')<sub>2</sub> fragment which contains the 2 Fab domains still linked through the hinge region of the immunoglobulin. Removal of the Fc region helps to reduce issues typically found with Fc-mediated binding.

This polyclonal has been validated as a secondary reagent (it's ability to recognize cells stained with a mouse IgG followed by this polyclonal antibody).

### Applications Reported

This polyclonal antibody has been reported for use in flow cytometric analysis, immunohistochemistry and immunocytochemistry.

### Applications Tested

This polyclonal antibody has been tested by flow cytometric analysis of normal human peripheral blood cells stained first with a mouse anti-human antibody. This can be used at less than or equal to 0.5 µg per test. A test is defined as the amount (µg) of antibody that will stain a cell sample in a final volume of 100 µL. Cell number should be determined empirically but can range from 10<sup>5</sup> to 10<sup>8</sup> cells/test. This polyclonal antibody has been tested by immunohistochemistry on formalin-fixed paraffin embedded sections that have been stained first with a mouse anti-human antibody. This can be used at less than or equal to 10 ug/mL. It is recommended that the antibody be carefully titrated for optimal performance in the assay of interest.

**eFluor<sup>®</sup> 660 is a replacement for Alexa Fluor<sup>®</sup> 647. eFluor<sup>®</sup> 660 emits at 659 nm and is excited with the red laser (633 nm). Please make sure that your instrument is capable of detecting this fluorochrome.**

### Related Products

00-4953 IHC /ICC Blocking Buffer - Low Protein

Not for further distribution without written consent.

Copyright © 2000-2012 eBioscience, Inc.

Tel: 888.999.1371 or 858.642.2058 • Fax: 858.642.2046 • [www.ebioscience.com](http://www.ebioscience.com) •  
[info@ebioscience.com](mailto:info@ebioscience.com)

---

## F(ab')<sub>2</sub> Anti-Mouse IgG eFluor® 660

**Catalog Number:** 50-4010

**Also known as:** Goat Anti-Mouse IgG

**RUO: For Research Use Only. Not for use in diagnostic procedures.**

---

00-4954 20X TBS Wash Buffer for IHC/ICC

00-4958 Fluoromount-G™

14-0049 Anti-Human CD4 Purified (RPA-T4)

14-9893 Anti-Human CD227 (Mucin 1) Purified (SM3)

---

Not for further distribution without written consent.

Copyright © 2000-2012 eBioscience, Inc.

Tel: 888.999.1371 or 858.642.2058 • Fax: 858.642.2046 • [www.ebioscience.com](http://www.ebioscience.com) •  
[info@ebioscience.com](mailto:info@ebioscience.com)