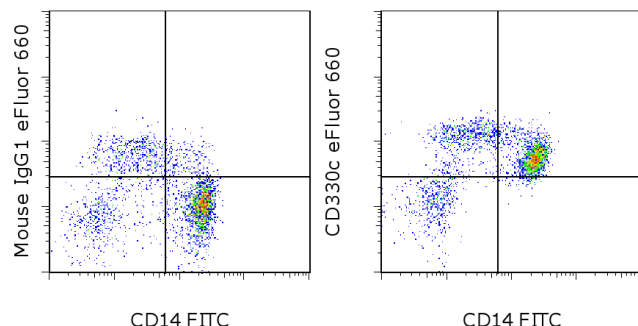


Anti-Human CD300c eFluor® 660 (Alexa® 647 Replacement)

Catalog Number: 50-3006

Also known as: LIR

RUO: For Research Use Only. Not for use in diagnostic procedures.



Staining of normal human peripheral blood cells with Anti-Human CD14 FITC (cat. 11-0149) and Mouse IgG1 K Isotype Control FITC (cat. 11-4714) (left) or Anti-Human CD300c eFluor® 660 (right). Cells in the monocyte gate were used for analysis.

Product Information

Contents: Anti-Human CD300c eFluor® 660 (Alexa® 647 Replacement)

Catalog Number: 50-3006

Clone: TX45

Concentration: 5 µL (0.5 µg)/test

Host/Isotype: Mouse IgG1, kappa

Formulation: aqueous buffer, 0.09% sodium azide, may contain carrier protein/stabilizer

Temperature Limitation: Store at 2-8°C. Do not freeze. Light-sensitive material.

Batch Code: Refer to vial

Use By: Refer to vial

Contains sodium azide

Description

This TX45 monoclonal antibody reacts with human CD300c (also known as LIR). CD300c belongs to the myeloid-associated immunoglobulin-like receptor (MAIR) family of genes located on human chromosome 17, a syntenic region of mouse chromosome 11. This 25-kDa type I membrane protein has a single extracellular Ig-like domain and a short cytoplasmic domain. CD300c is expressed on subsets of T and B cells, NK cells, granulocytes, dendritic cells, mast cells, monocytes, and peritoneal macrophages, where CD300c mediates proinflammatory cytokine production. This molecule has also been linked to the regulation of TNF alpha and IFN alpha secretion in activated plasmacytoid dendritic cells. CD300c associates with the adapter protein DAP12, as well as the Fc gamma.

Applications Reported

This TX45 antibody has been reported for use in flow cytometric analysis.

Applications Tested

This TX45 antibody has been pre-titrated and tested by flow cytometric analysis of normal human peripheral blood cells. This can be used at 5 µL (0.5 µg) per test. A test is defined as the amount (µg) of antibody that will stain a cell sample in a final volume of 100 µL. Cell number should be determined empirically but can range from 10⁵ to 10⁸ cells/test.

eFluor® 660 is a replacement for Alexa Fluor® 647. eFluor® 660 emits at 659 nm and is excited with the red laser (633 nm). Please make sure that your instrument is capable of detecting this fluorochrome.

References

Ju X, Zenke M, Hart DN, Clark GJ. CD300a/c regulate type I interferon and TNF-alpha secretion by human plasmacytoid dendritic cells stimulated with TLR7 and TLR9 ligands. *Blood*. 2008 Aug 15;112(4):1184-94.

Nakahashi C, Tahara-Hanaoka S, Totsuka N, Okoshi Y, Takai T, Ohkohchi N, Honda S, Shibuya K, Shibuya A. Dual assemblies of an activating immune receptor, MAIR-II, with ITAM-bearing adapters DAP12 and FcRgamma chain on peritoneal macrophages. *J Immunol*. 2007 Jan 15;178(2):765-70.

Not for further distribution without written consent.

Copyright © 2000-2012 eBioscience, Inc.

Tel: 888.999.1371 or 858.642.2058 • Fax: 858.642.2046 • www.ebioscience.com • info@ebioscience.com

Anti-Human CD300c eFluor® 660 (Alexa® 647 Replacement)

Catalog Number: 50-3006

Also known as: LIR

RUO: For Research Use Only. Not for use in diagnostic procedures.

Yotsumoto K, Okoshi Y, Shibuya K, Yamazaki S, Tahara-Hanaoka S, Honda S, Osawa M, Kuroiwa A, Matsuda Y, Tenen DG, Iwama A, Nakauchi H, Shibuya A. Paired activating and inhibitory immunoglobulin-like receptors, MAIR-I and MAIR-II, regulate mast cell and macrophage activation. J Exp Med. 2003 Jul 21;198(2):223-33

Related Products

00-4222 Flow Cytometry Staining Buffer

11-0149 Anti-Human CD14 FITC (61D3)