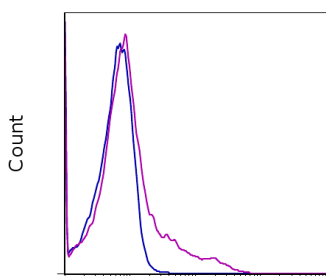


Anti-Mouse CD106 (VCAM-1) eFluor[®] 660 (Alexa Fluor[®] 647 Replacement)

Catalog Number: 50-1061

Also known as: VCAM1, vascular cell adhesion molecule-1

RUO: For Research Use Only. Not for use in diagnostic procedures.



CD106 (VCAM-1) eFluor 660

Staining of C57Bl/6 bone marrow cells with 0.25 μ g of Rat IgG2a K Isotype Control eFluor[®] 660 (cat. 50-4321) (blue histogram) or 0.25 μ g of Anti-Mouse CD106 (VCAM-1) eFluor[®] 660 (purple histogram). Total viable cells were used for analysis.

Product Information

Contents: Anti-Mouse CD106 (VCAM-1) eFluor[®] 660 (Alexa Fluor[®] 647 Replacement)

REF **Catalog Number:** 50-1061

Clone: 429

Concentration: 0.2 mg/mL

Host/Isotype: Rat IgG2a, kappa

Formulation: aqueous buffer, 0.09% sodium azide, may contain carrier protein/stabilizer

Temperature Limitation: Store at 2-8°C. Do not freeze. Light-sensitive material.

Batch Code: Refer to vial

Use By: Refer to vial

Contains sodium azide



LOT



Description

The 429 monoclonal antibody reacts with mouse CD106 (Vascular Cell Adhesion Molecule-1, VCAM-1), a 110 kDa transmembrane glycoprotein expressed by myeloid lineage and bone marrow stromal cells. Endothelial cells constitutively express low levels of CD106 and upregulate it upon cytokine stimulation. CD106 binds to integrin alpha4 beta1 (VLA-4, CD49d/CD29) and Integrin α 4 β 7 (LPAM-1) and these interactions in the bone marrow and thymus are important for early lymphocyte and myeloid development. Cytokine-mediated upregulation of CD106 on endothelial cells suggests a role for this antigen in the inflammatory response.

Applications Reported

This 429 antibody has been reported for use in flow cytometric analysis.

Applications Tested

This 429 antibody has been tested by flow cytometric analysis of mouse bone marrow cells. This can be used at less than or equal to 0.5 μ g per test. A test is defined as the amount (μ g) of antibody that will stain a cell sample in a final volume of 100 μ L. Cell number should be determined empirically but can range from 10^5 to 10^8 cells/test. It is recommended that the antibody be carefully titrated for optimal performance in the assay of interest.

eFluor[®] 660 is a replacement for Alexa Fluor[®] 647. eFluor[®] 660 emits at 659 nm and is excited with the red laser (633 nm). Please make sure that your instrument is capable of detecting this fluorochrome.

References

Ross EA, Freeman S, Zhao Y, Dhanjal TS, Ross EJ, Lax S, Ahmed Z, Hou TZ, Kalia N, Egginton S, Nash G, Watson SP, Frampton J, Buckley CD. A novel role for PECAM-1 (CD31) in regulating haematopoietic progenitor cell compartmentalization between the peripheral blood and bone marrow. PLoS One. 2008 Jun 4;3(6):e2338. (429, IHC frozen)

Not for further distribution without written consent.

Copyright © 2000-2012 eBioscience, Inc.

Tel: 888.999.1371 or 858.642.2058 • Fax: 858.642.2046 • www.ebioscience.com • info@ebioscience.com

Anti-Mouse CD106 (VCAM-1) eFluor® 660 (Alexa Fluor® 647 Replacement)

Catalog Number: 50-1061

Also known as: VCAM1, vascular cell adhesion molecule-1

RUO: For Research Use Only. Not for use in diagnostic procedures.

Finke D, Acha-Orbea H, Mattis A, Lipp M, Kraehenbuhl J. CD4+CD3- cells induce Peyer's patch development: role of alpha4beta1 integrin activation by CXCR5. *Immunity*. 2002 Sep;17(3):363-73. (429, IHC frozen)

Related Products

00-4222 Flow Cytometry Staining Buffer

50-4321 Rat IgG2a K Isotype Control eFluor® 660 (eBR2a)

Not for further distribution without written consent.

Copyright © 2000-2012 eBioscience, Inc.

Tel: 888.999.1371 or 858.642.2058 • Fax: 858.642.2046 • www.ebioscience.com •
info@ebioscience.com