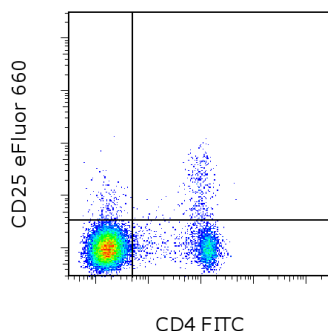


Anti-Mouse CD25 eFluor[®] 660

Catalog Number: 50-0252

Also known as: IL-2 Receptor alpha

RUO: For Research Use Only. Not for use in diagnostic procedures.



Staining of C57Bl/6 splenocytes with Anti-Mouse CD4 FITC (cat. 11-0042) and 0.06 ug of Anti-Mouse CD25 eFluor[®] 660. Total viable cells were used for analysis.

Product Information



Contents: Anti-Mouse CD25 eFluor[®] 660

Catalog Number: 50-0252

Clone: eBio7D4 (7D4)

Concentration: 0.2 mg/mL

Host/Isotype: Rat IgM, kappa



Formulation: aqueous buffer, 0.09% sodium azide, may contain carrier protein/stabilizer

Temperature Limitation: Store at 2-8°C. Do not freeze. Light-sensitive material.

Batch Code: Refer to vial

Use By: Refer to vial



Description

The eBio7D4 antibody reacts with mouse CD25, the 55 kDa interleukin-2 receptor alpha chain (IL-2Ra). CD25 is expressed by early progenitors of the T and B lineage, as well as by activated mature T and B lymphocytes. By itself, CD25 binds IL-2 only with low affinity. However, CD25 associates with CD122 (IL-2 receptor beta chain) and CD132 (common gamma chain) to form the high affinity IL-2 receptor. CD25 plays a role in lymphocyte differentiation and activation/proliferation. The epitopes recognized by eBio3C7, PC61.5 and eBio7D4 are all different allowing for depletion with one antibody (typically PC61.5) followed by subsequent detection with another one. eBio7D4 has been reported to block IL-2 binding but can be overcome by additional IL-2. The monoclonal antibody PC61.5 (cat. 16-0251) is recommended for in vivo studies.

Applications Reported

This eBio7D4(7D4) antibody has been reported for use in flow cytometric analysis.

Applications Tested

This eBio7D4(7D4) antibody has been tested by flow cytometric analysis of mouse splenocytes. This can be used at less than or equal to 0.125 µg per test. A test is defined as the amount (µg) of antibody that will stain a cell sample in a final volume of 100 µL. Cell number should be determined empirically but can range from 10⁵ to 10⁸ cells/test. It is recommended that the antibody be carefully titrated for optimal performance in the assay of interest.

eFluor[®] 660 is a replacement for Alexa Fluor[®] 647. eFluor[®] 660 emits at 659 nm and is excited with the red laser (633 nm). Please make sure that your instrument is capable of detecting this fluorochrome.

References

Malek TR, Robb RJ, Shevach EM. Identification and initial characterization of a rat monoclonal antibody reactive with the murine interleukin 2 receptor-ligand complex. Proc Natl Acad Sci U S A. 1983 Sep;80(18):5694-8.

Ortega G, Robb RJ, Shevach EM, Malek TR. The murine IL 2 receptor. I. Monoclonal antibodies that define distinct functional epitopes on activated T cells and react with activated B cells. J Immunol. 1984 Oct;133(4):1970-5.

Not for further distribution without written consent.

Copyright © 2000-2012 eBioscience, Inc.

Tel: 888.999.1371 or 858.642.2058 • Fax: 858.642.2046 • www.ebioscience.com •
info@ebioscience.com

Anti-Mouse CD25 eFluor[®] 660

Catalog Number: 50-0252

Also known as: IL-2 Receptor alpha

RUO: For Research Use Only. Not for use in diagnostic procedures.

Related Products

00-4222 Flow Cytometry Staining Buffer

00-5523 Foxp3 / Transcription Factor Staining Buffer Set

11-0042 Anti-Mouse CD4 FITC (RM4-5)

12-5773 Anti-Mouse/Rat Foxp3 PE (FJK-16s)

Not for further distribution without written consent.

Copyright © 2000-2012 eBioscience, Inc.

Tel: 888.999.1371 or 858.642.2058 • Fax: 858.642.2046 • www.ebioscience.com •
info@ebioscience.com