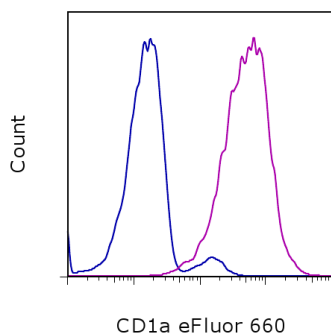


Anti-Human CD1a eFluor® 660 (Alexa Fluor® 647 Replacement)

Catalog Number: 50-0019

Also known as: Leu-6, T6, R4

RUO: For Research Use Only. Not for use in diagnostic procedures.



Staining of MOLT-4 cells with Mouse IgG1 K Isotype Control eFluor® 660 (cat. 50-4714) (blue histogram) or Anti-Human CD1a eFluor® 660 (purple histogram). Total viable cells were used for analysis.

Product Information

Contents: Anti-Human CD1a eFluor® 660 (Alexa Fluor® 647 Replacement)

Catalog Number: 50-0019

Clone: HI149

Concentration: 5 µL (0.25 µg)/test

Host/Isotype: Mouse IgG1, kappa

HLDA Workshop: V 5T CD01.01

Formulation: aqueous buffer, 0.09% sodium azide, may contain carrier protein/stabilizer

Temperature Limitation: Store at 2-8°C. Do not freeze. Light-sensitive material.

Batch Code: Refer to vial

Use By: Refer to vial

Contains sodium azide

Description

The HI149 monoclonal antibody reacts with human CD1a, a 49 kDa protein expressed by cortical thymocytes and dendritic cells including Langerhans cells. The CD1 family of proteins share some structural and functional characteristics with the MHC class I molecules; however, members of the CD1 family are not polymorphic. Similar to MHC class I, CD1a associates with the beta2-microglobulin and is thought to play a role in antigen presentation.

Applications Reported

This HI149 antibody has been reported for use in flow cytometric analysis.

Applications Tested

This HI149 antibody has been pre-titrated and tested by flow cytometric analysis of the MOLT-4 cell line. This can be used at 5 µL (0.25 µg) per test. A test is defined as the amount (µg) of antibody that will stain a cell sample in a final volume of 100 µL. Cell number should be determined empirically but can range from 10⁵ to 10⁸ cells/test.

eFluor® 660 is a replacement for Alexa Fluor® 647. eFluor® 660 emits at 659 nm and is excited with the red laser (633 nm). Please make sure that your instrument is capable of detecting this fluorochrome.

References

Knapp, W., B. Dorken, et al. eds. (1989). Leucocyte Typing IV: White Cell Differentiation Antigens. Oxford University Press. New York.

Schlossman, S., L. Bloumsell, et al. eds (1995). Leucocyte Typing V: White Cell Differentiation Antigens. Oxford University Press. New York.

Related Products

00-4222 Flow Cytometry Staining Buffer

50-4714 Mouse IgG1 K Isotype Control eFluor® 660 (P3.6.2.8.1)

Not for further distribution without written consent.

Copyright © 2000-2012 eBioscience, Inc.

Tel: 888.999.1371 or 858.642.2058 • Fax: 858.642.2046 • www.ebioscience.com • info@ebioscience.com

Anti-Human CD1a eFluor® 660 (Alexa Fluor® 647 Replacement)

Catalog Number: 50-0019

Also known as: Leu-6, T6, R4

RUO: For Research Use Only. Not for use in diagnostic procedures.

Not for further distribution without written consent.

Copyright © 2000-2012 eBioscience, Inc.

Tel: 888.999.1371 or 858.642.2058 • Fax: 858.642.2046 • www.ebioscience.com •
info@ebioscience.com