

PE anti-human CD111 (Nectin-1)

Catalog # / Size: 340403 / 25 tests
340404 / 100 tests

Clone: R1.302

Isotype: Mouse IgG1, κ

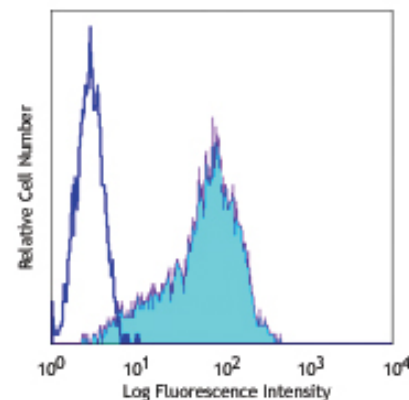
Immunogen: Human Nectin-1 transfected NIH/3T3 cells

Reactivity: Human

Preparation: The antibody was purified by affinity chromatography, and conjugated with PE under optimal conditions. The solution is free of unconjugated PE and unconjugated antibody.

Formulation: Phosphate-buffered solution, pH 7.2, containing 0.09% sodium azide and 0.2% (w/v) BSA (origin USA).

Storage: The antibody solution should be stored undiluted at 4°C and protected from prolonged exposure to light. **Do not freeze.**



Human erythroleukemia cell line TF-1 stained with R1.302 PE

Applications:

Applications: FC - Quality tested

Recommended Usage: Each lot of this antibody is quality control tested by immunofluorescent staining with flow cytometric analysis. **Test size products are transitioning from 20 μ l to 5 μ l per test.** Please check your vial or your CoA to find the suggested use of this reagent per million cells in 100 μ l staining volume or per 100 μ l of whole blood. It is recommended that the reagent be titrated for optimal performance for each application. Read more at www.biolegend.com/testsize regarding the test size change.

Application Notes: Additional reported applications (for relevant formats) include: immunoprecipitation, Western blot, immunohistochemical staining of frozen tissue sections, block HSV-1 and HSV-2 entry into cells

Application References:

1. Cocchi F, *et al.* 1998. *Proc. Natl. Acad. Sci. USA.* 95:15700.
2. Martinez WM and Spear PG. 2002. *J. Virol.* 76:7255.
3. Reymond N, *et al.* 2004. *J. Exp Med.* 199:1331.

Description: CD111, known as poliovirus receptor related 1 protein (PRR1), Nectin-1 and HveC, is a 75 kD type I transmembrane glycoprotein. A member of the nectin family and Ig gene superfamily, CD111 is broadly expressed on endothelial cells, epithelial cells, neuronal cells, megakaryocytes, and CD34-positive stem cells. CD111 functions as one of the herpes simplex virus 1 (HSV-1) and HSV-2 receptors and is an adhesion molecule involved in the formation of cell junctions.

Antigen References:

1. Zola h, *et al.* 2007. Leukocyte and Stromal Cell Molecules: The CD Markers. Wiley-Liss A John Wiley & Sons Inc, Publication.
2. Simpson SA, *et al.* 2005. *J. Neuroviral.* 11:208.
3. Akhtar J, *et al.* 2008. *Ophthalmol. Vis. Sci.* 49:4026.

Related Products: Product
PE Mouse IgG1, κ Isotype Ctrl (FC)

Clone
MOPC-21

Application
FC



For research use only. Not for diagnostic use. Not for resale. BioLegend will not be held responsible for patent infringement or other violations that may occur with the use of our products.



*These products may be covered by one or more Limited Use Label Licenses (see the BioLegend Catalog or our website, www.biolegend.com/ordering#license). BioLegend products may not be transferred to third parties, resold, modified for resale, or used to manufacture commercial products, reverse engineer functionally similar materials, or to provide a service to third parties without written approval of BioLegend. By use of these products you accept the terms and conditions of all applicable Limited Use Label Licenses. Unless otherwise indicated, these products are for research use only and are not intended for human or animal diagnostic, therapeutic or commercial use.