

PE anti-human CD102 (ICAM-2)

Catalog # / Size: 328505 / 25 tests
328506 / 100 tests

Clone: CBR-IC2/2

Isotype: Mouse IgG2a, κ

Workshop Number: V BP363

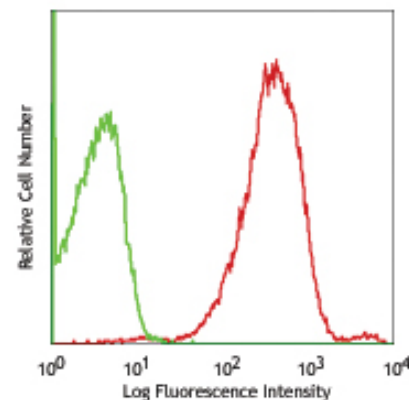
Immunogen: ICAM-2 cDNA transfected COS cells

Reactivity: Human

Preparation: The antibody was purified by affinity chromatography, and conjugated with PE under optimal conditions. The solution is free of unconjugated PE and unconjugated antibody.

Formulation: Phosphate-buffered solution, pH 7.2, containing 0.09% sodium azide and 0.2% (w/v) BSA (origin USA).

Storage: The antibody solution should be stored undiluted at 4°C and protected from prolonged exposure to light. **Do not freeze.**



Human peripheral blood lymphocytes stained with CBR-IC2/2 PE

Applications:

Applications: FC - Quality tested

Recommended Usage: Each lot of this antibody is quality control tested by immunofluorescent staining with flow cytometric analysis. **Test size products are transitioning from 20 µl to 5 µl per test.** Please check your vial or your CoA to find the suggested use of this reagent per million cells in 100 µl staining volume or per 100 µl of whole blood. It is recommended that the reagent be titrated for optimal performance for each application. Read more at www.biolegend.com/testsize regarding the test size change.

Application Notes: Additional reported applications: immunoprecipitation(1), blocking the interaction between ICAM-2 and LFA-1(1), immunohistochemical staining(2) of frozen tissue sections

Application References: 1. DeFougerolles AR, *et al.* 1991. *J. Exp. Med.* 174:253.
2. Van Herpen CML, *et al.* 2005. *Clin. Cancer Res.* 11:1899

Description: CD102 is a 55 kD type I transmembrane glycoprotein, belongs to immunoglobulin superfamily, also known as Intercellular Adhesion Molecule-2, or ICAM-2. CD102 is constitutively expressed on vascular endothelial cells, some lymphocytes, monocytes, and platelets. CD102 is thought to be involved in lymphocyte recirculation and in costimulation of immune response. CD102 is a counter receptor of LFA-1 (CD11a/CD18), DC-SIGN and MAC-1.

Antigen References: 1. Weber KSC, *et al.* 2004. *Inflammation.* 28:177.
2. Barclay A, *et al.* 1997 *The Leukocyte Antigen Factsbook* Academic Press.
3. Casasnovas JM, *et al.* 1999. *P. Natl. Acad. Sci. USA* 96:3017.
4. Diamonds MS, *et al.* 1990. *J. Cell Biol.* 111:3129.

Related Products:

| Product | Clone | Application |
|---|----------|---------------|
| Cell Staining Buffer | | FC, ICC, ICFC |
| RBC Lysis Buffer (10X) | | FC, ICFC |
| PE Mouse IgG2a, κ Isotype Ctrl (FC) | MOPC-173 | FC |
| Human TruStain FcX™ (Fc Receptor Blocking Solution) | | FC, ICC, ICFC |



For research use only. Not for diagnostic use. Not for resale. BioLegend will not be held responsible for patent infringement or other violations that may occur with the use of our products.



*These products may be covered by one or more Limited Use Label Licenses (see the BioLegend Catalog or our website, www.biolegend.com/ordering#license). BioLegend products may not be transferred to third parties, resold, modified for resale, or used to manufacture commercial products, reverse engineer functionally similar materials, or to provide a service to third parties without written approval of BioLegend. By use of these products you accept the terms and conditions of all applicable Limited Use Label Licenses. Unless otherwise indicated, these products are for research use only and are not intended for human or animal diagnostic, therapeutic or commercial use.