

Product Data Sheet

Purified anti-human CD102 (ICAM-2)

Catalog # / Size: 328502 / 100 µg

Clone: CBR-IC2/2

Isotype: Mouse IgG2a, κ

Workshop Number: V BP363

Immunogen: ICAM-2 cDNA transfected COS cells

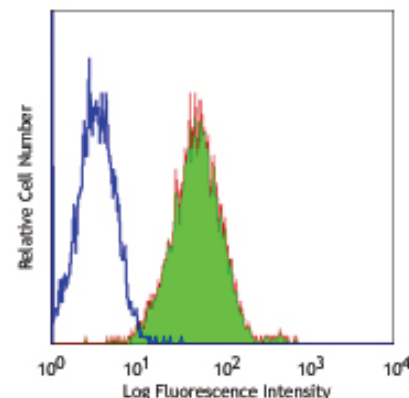
Reactivity: Human

Preparation: The antibody was purified by affinity chromatography.

Formulation: Phosphate-buffered solution, pH 7.2, containing 0.09% sodium azide.

Concentration: 0.5 mg/ml

Storage: The antibody solution should be stored undiluted at 4°C.



Human peripheral blood lymphocytes stained with purified CBRIC2/2, followed by anti-mouse IgG FITC

Applications:

Applications: FC - *Quality tested*
 IP, IHC - *Reported in the literature*

Recommended Usage: Each lot of this antibody is quality control tested by immunofluorescent staining with flow cytometric analysis. For immunofluorescent staining, the suggested use of this reagent is ≤ 2.0 µg per 10⁶ cells in 100 µl volume or 100 µl of whole blood. It is recommended that the reagent be titrated for optimal performance for each application.

Application Notes: Additional reported applications: immunoprecipitation(1), blocking the interaction between ICAM-2 and LFA-1(1), immunohistochemical staining(2) of frozen tissue sections

Application References: 1. DeFougerolles AR, et al. 1991. *J. Exp. Med.* 174:253.
 2. Van Herpen CML, et al. 2005. *Clin. Cancer Res.* 11:1899

Description: CD102 is a 55 kD type I transmembrane glycoprotein, belongs to immunoglobulin superfamily, also known as Intercellular Adhesion Molecule-2, or ICAM-2. CD102 is constitutively expressed on vascular endothelial cells, some lymphocytes, monocytes, and platelets. CD102 is thought to be involved in lymphocyte recirculation and in costimulation of immune response. CD102 is a counter receptor of LFA-1 (CD11a/CD18), DC-SIGN and MAC-1.

Antigen References: 1. Weber KSC, et al. 2004. *Inflammation*. 28:177.
 2. Barclay A, et al. 1997. *The Leukocyte Antigen Factsbook* Academic Press.
 3. Casasnovas JM, et al. 1999. *P. Natl. Acad. Sci. USA* 96:3017.
 4. Diamonds MS, et al. 1990. *J. Cell Biol.* 111:3129.

Related Products:

Product
 Cell Staining Buffer
 RBC Lysis Buffer (10X)
 Purified Mouse IgG2a, κ Isotype Ctrl

Clone

MG2a-53

Application

FC, ICC, ICFC
 FC, ICFC
 FC, ICC, IF, IHC, IP, WB



For research use only. Not for diagnostic use. Not for resale. BioLegend will not be held responsible for patent infringement or other violations that may occur with the use of our products.



*These products may be covered by one or more Limited Use Label Licenses (see the BioLegend Catalog or our website, www.biollegend.com/ordering#license). BioLegend products may not be transferred to third parties, resold, modified for resale, or used to manufacture commercial products, reverse engineer functionally similar materials, or to provide a service to third parties without written approval of BioLegend. By use of these products you accept the terms and conditions of all applicable Limited Use Label Licenses. Unless otherwise indicated, these products are for research use only and are not intended for human or animal diagnostic, therapeutic or commercial use.