

## FITC anti-human CD100

**Catalog # / Size:** 328406 / 100 tests

**Clone:** A8

**Isotype:** Mouse IgG1,  $\kappa$

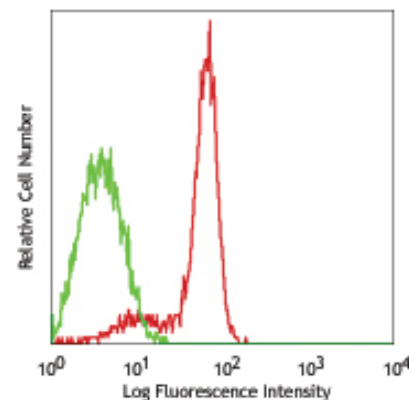
**Immunogen:** Human PHA activated lymphocytes

**Reactivity:** Human, **Cross-Reactivity:** Cynomolgus

**Preparation:** The antibody was purified by affinity chromatography, and conjugated with FITC under optimal conditions. The solution is free of unconjugated FITC.

**Formulation:** Phosphate-buffered solution, pH 7.2, containing 0.09% sodium azide and 0.2% (w/v) BSA (origin USA).

**Storage:** The antibody solution should be stored undiluted at 4°C and protected from prolonged exposure to light. **Do not freeze.**



Human peripheral blood lymphocytes stained with A8 FITC

## Applications:

**Applications:** FC - Quality tested

**Recommended Usage:** Each lot of this antibody is quality control tested by immunofluorescent staining with flow cytometric analysis. **Test size products are transitioning from 20  $\mu$ l to 5  $\mu$ l per test.** Please check your vial or your CoA to find the suggested use of this reagent per million cells in 100  $\mu$ l staining volume or per 100  $\mu$ l of whole blood. It is recommended that the reagent be titrated for optimal performance for each application. Read more at [www.biolegend.com/testsize](http://www.biolegend.com/testsize) regarding the test size change.

**Application References:**

- Hall K, et al. 1996. *P. Natl. Acad. Sci. USA* 93:11780.
- Mizrahi S, et al. 2007. *PLoS One*. 2(9):e818.
- Yoshino N, et al. 2000. *Exp. Anim. (Tokyo)* 49:97. (FC)

**Description:** CD100, a 150 kD homodimer, is a novel semaphorin that induces B cells to aggregate and improves their viability in vitro. Semaphorins are neuronal chemorepellants that direct pioneering neurons during nervous system development. CD100 modifies CD40-CD40L B cell signaling by augmenting B cell aggregation and survival and down regulating CD23 expression. CD72 is a lymphocyte receptor for the class IV semaphorin CD100, which is involved in regulating B cell signaling. CD100 is expressed on resting and PHA stimulated T cells. The protein is weakly expressed on NK cells, EBV transformed B cells, monocytes and tumor/peripheral blood T cell lines, and at higher density on activated T cells and B cells.

**Antigen References:**

- Schlossman SL Bloumsell W Gilks et al. eds. 1995. *Leucocyte Typing V:White Cell Differentiation Antigens*. Oxford University Press New York.
- Bougeret CIG Mansur H Dastot et al. 1992. Increased surface expression of a newly identified 150 kDa dimer early afterhuman T lymphocyte activation. *J. Immunol.* 148:318.
- Knapp WB Dorken EP. Rieber et al, eds. 1989. *Leucocyte Typing IV:White Cell Differentiation Antigens*. Oxford University Press New York.

### Related Products:

**Product**  
FITC Mouse IgG1,  $\kappa$  Isotype Ctrl  
Cell Staining Buffer  
RBC Lysis Buffer (10X)

**Clone**  
MOPC-21

**Application**  
FC, ICFC  
FC, ICC, ICFC  
FC, ICFC



For research use only. Not for diagnostic use. Not for resale. BioLegend will not be held responsible for patent infringement or other violations that may occur with the use of our products.



\*These products may be covered by one or more Limited Use Label Licenses (see the BioLegend Catalog or our website, [www.biolegend.com/ordering#license](http://www.biolegend.com/ordering#license)). BioLegend products may not be transferred to third parties, resold, modified for resale, or used to manufacture commercial products, reverse engineer functionally similar materials, or to provide a service to third parties without written approval of BioLegend. By use of these products you accept the terms and conditions of all applicable Limited Use Label Licenses. Unless otherwise indicated, these products are for research use only and are not intended for human or animal diagnostic, therapeutic or commercial use.