

Product Data Sheet

Alexa Fluor® 488 anti-human CD105

Catalog # / Size: 323209 / 25 tests
323210 / 100 tests

Clone: 43A3

Isotype: Mouse IgG1, κ

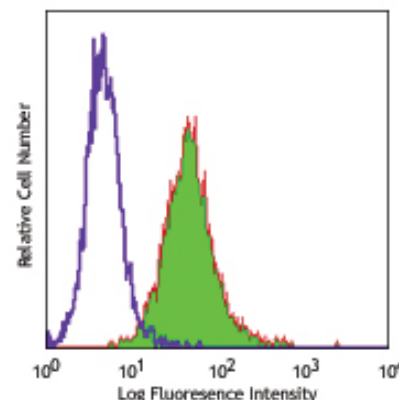
Immunogen: L-cells transfected with human CD105

Reactivity: Human

Preparation: The antibody was purified by affinity chromatography, and conjugated with Alexa Fluor® 488 under optimal conditions. The solution is free of unconjugated Alexa Fluor® 488.

Formulation: Phosphate-buffered solution, pH 7.2, containing 0.09% sodium azide and 0.2% (w/v) BSA (origin USA).

Storage: The antibody solution should be stored undiluted at 4°C and protected from prolonged exposure to light. **Do not freeze.**



Human monocytic cell line THP-1
stained with 43A3 Alexa Fluor® 488

Applications:

Applications: FC - Quality tested

Recommended Usage: Each lot of this antibody is quality control tested by immunofluorescent staining with flow cytometric analysis. For immunofluorescent staining, the suggested use of this reagent is 5 μ l per million cells or 5 μ l per 100 μ l of whole blood. It is recommended that the reagent be titrated for optimal performance for each application.

* Alexa Fluor® 488 has a maximum emission of 519 nm when it is excited at 488 nm.

** Alexa Fluor® is a registered trademark of Molecular Probes, Inc. Alexa Fluor® dye antibody conjugates are sold under license from Molecular Probes, Inc. for research use only, except for use in combination with microarrays and high content screening, and are covered by pending and issued patents.

Application References: 1. Bühring HJ, *et al.* 1991. *Leukemia* 5:841.
2. Vogel W, *et al.* 2002. *Haematologica* 88:126.
3. Marolt D, *et al.* 2012. *PNAS*. 109:8705. PubMed.

Description: CD105 is also known as Endoglin. It is a type I integral membrane homodimer protein with subunits of 90 kD found on vascular endothelial cells and syncytiotrophoblasts of placenta. CD105 is weakly expressed on stromal fibroblasts. It is also expressed on activated monocytes and tissue macrophages. Expression of CD105 is increased on activated endothelium in tissues undergoing angiogenesis, such as in tumors, or in cases of wound healing or dermal inflammation. CD105 is a component of the TGF- β receptor system in human umbilical vein endothelial cells and binds TGF- β 1 and β 3 with high affinity but does not bind to TGF- β 2.

Antigen References: 1. Mason D, *et al.* Eds. 2002. *Leucocyte Typing VII*. Oxford University Press. New York.
2. Pierelli L, *et al.* 2001. *Leuk. Lymphoma* 42:1195.

Related Products:

Product
Cell Staining Buffer
Alexa Fluor® 488 Mouse IgG1, κ Isotype Ctrl (FC)
Human TruStain FcX™ (Fc Receptor Blocking Solution)

Clone

MOPC-21

Application

FC, ICC, ICFC
FC, IF
FC, ICC, ICFC



For research use only. Not for diagnostic use. Not for resale. BioLegend will not be held responsible for patent infringement or other violations that may occur with the use of our products.



*These products may be covered by one or more Limited Use Label Licenses (see the BioLegend Catalog or our website, www.biollegend.com/ordering#license). BioLegend products may not be transferred to third parties, resold, modified for resale, or used to manufacture commercial products, reverse engineer functionally similar materials, or to provide a service to third parties without written approval of BioLegend. By use of these products you accept the terms and conditions of all applicable Limited Use Label Licenses. Unless otherwise indicated, these products are for research use only and are not intended for human or animal diagnostic, therapeutic or commercial use.