

Product Data Sheet

Purified anti-human CD116

Catalog # / Size: 305901 / 25 µg
 305902 / 100 µg

Clone: 4H1

Isotype: Mouse IgG1, κ

Immunogen: Human GM-CSFRα transfected COS cells

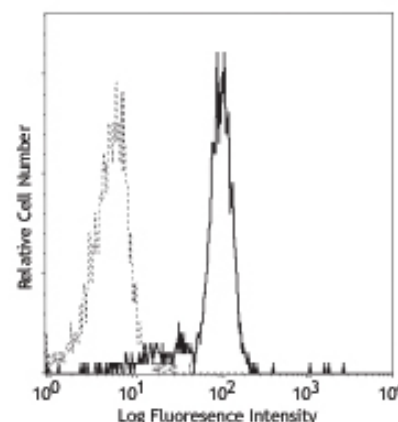
Reactivity: Human

Preparation: The antibody was purified by affinity chromatography.

Formulation: Phosphate-buffered solution, pH 7.2, containing 0.09% sodium azide.

Concentration: 0.5 mg/ml

Storage: The antibody solution should be stored undiluted at 4°C.



Human peripheral blood monocytes stained with 4H1 FITC

Applications:

Applications: FC - *Quality tested*
 IP, WB, IHC - *Reported in the literature*

Recommended Usage: Each lot of this antibody is quality control tested by immunofluorescent staining with flow cytometric analysis. For immunofluorescent staining, the suggested use of this reagent is ≤ 0.5 µg per million cells in 100 µl volume or 100 µl of whole blood. It is recommended that the reagent be titrated for optimal performance for each application.

Application Notes: Additional reported applications (for the relevant formats) include: immunoprecipitation², Western blotting¹ and immunohistochemical staining of acetone-fixed frozen tissue sections.

Application References: 1. Stomski FC, *et al.* 1998. *J. Biol. Chem.* 273:1192. (WB)
 2. McClure B, *et al.* 2001. *Blood* 98:3165. (IP)
 3. Guthridge MA, *et al.* 2004. *Blood* 103:820.

Description: CD116 is a 70-85 kD α chain of the GM-CSF receptor. It combines with CDw131 β chain to form the high affinity GM-CSF receptor. A soluble form of CD116, which binds GM-CSF with a relatively low affinity, has been identified. In addition, an alternatively spliced form of CD116 with an altered cytoplasmic tail has been described. CD116 is expressed on various myeloid cells including monocytes, macrophages, neutrophils, eosinophils, dendritic cells and their precursors, fibroblasts, and endothelial cells. CD116 is expressed on myeloid leukemias, osteogenic sarcoma cell lines, osteoblast-like cells and breast and lung carcinoma cell lines.

Antigen References: 1. Miyajima A, *et al.* 1993. *Blood* 82:1960.

Related Products:

Product	Clone	Application
Purified anti-human CD131	1C1	FC, IP, WB
Purified Mouse IgG1, κ Isotype Ctrl	MOPC-21	FC, ICFC, ICC, IF, IHC, IP, WB
AKP Goat anti-mouse IgG (minimal x-reactivity)	Poly4053	ELISA, WB, IHC
APC Goat anti-mouse IgG (minimal x-reactivity)	Poly4053	FC
Biotin Goat anti-mouse IgG (minimal x-reactivity)	Poly4053	FC, ELISA, IHC, IF, WB
FITC Goat anti-mouse IgG (minimal x-reactivity)	Poly4053	FC
HRP Goat anti-mouse IgG (minimal x-reactivity)	Poly4053	ELISA, IHC, WB
PE Goat anti-mouse IgG (minimal x-reactivity)	Poly4053	FC
Cell Staining Buffer		FC, ICC, ICFC
RBC Lysis Buffer (10X)		FC, ICFC



For research use only. Not for diagnostic use. Not for resale. BioLegend will not be held responsible for patent infringement or other violations that may occur with the use of our products.



*These products may be covered by one or more Limited Use Label Licenses (see the BioLegend Catalog or our website, www.biollegend.com/ordering#license). BioLegend products may not be transferred to third parties, resold, modified for resale, or used to manufacture commercial products, reverse engineer functionally similar materials, or to provide a service to third parties without written approval of BioLegend. By use of these products you accept the terms and conditions of all applicable Limited Use Label Licenses. Unless otherwise indicated, these products are for research use only and are not intended for human or animal diagnostic, therapeutic or commercial use.