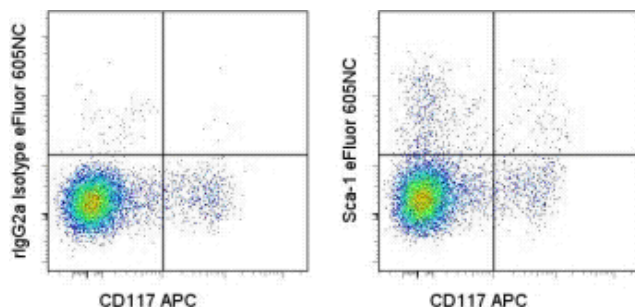


Anti-Mouse Ly-6A/E (Sca-1) eFluor® 605NC

Catalog Number: 93-5981

Also Known As: Sca1, Ly6AE, Ly6A, Ly6E

RUO: For Research Use Only. Not for use in diagnostic procedures.



Staining of C57BL/6 bone marrow cells with Anti-Mouse CD117 APC (cat. 17-1171) and Rat IgG2a K Isotype Control eFluor® 605NC (cat. 93-4321) (left) or Anti-Mouse Ly-6A/E (Sca-1) eFluor® 605NC (right). Lineage lo cells were used for analysis.

Product Information

Contents: Anti-Mouse Ly-6A/E (Sca-1) eFluor® 605NC

REF **Catalog Number:** 93-5981

Clone: D7

Concentration: 5 µL

Host/Isotype: Rat IgG2a, kappa

Formulation: aqueous buffer, 0.09% sodium azide, may contain carrier protein/stabilizer

Temperature Limitation: Store at 2-8°C. Light sensitive material. This product is guaranteed for 6 months upon receipt when stored properly.

LOT **Batch Code:** Refer to Vial

Use By: Refer to Vial

Caution, contains Azide

Description

The D7 monoclonal antibody reacts with mouse Sca-1, an 18 kDa member of the Ly-6 family of GPI-linked surface proteins. D7 reacts with both Ly-6E.1 and Ly-6A.2 molecules expressed by mouse hematopoietic stem cells, myeloid population and peripheral T and B cells. Non-activated splenocytes from Ly-6.2 strains including C57BL, SJL, 129, AKR, and others demonstrate higher frequency of D7-positive cells compared to the Ly-6.1 strains such as BALB/c, C3H, NZB and others. Sca-1 is expressed at high levels upon activation regardless of the Ly-6 haplotype. The Ly-6 family is involved in regulation and function of T cell activation. Sca-1 is a major phenotypic marker for mouse hematopoietic progenitor/stem cell subset.

Applications Reported

This D7 antibody has been reported for use in flow cytometric analysis.

Applications Tested

This D7 antibody has been pre-titrated and tested by flow cytometric analysis of mouse bone marrow. This can be used at 5 µL per test. A test is defined as the amount of antibody that will stain a cell sample in a final volume of 100 µL. Cell number should be determined empirically but can range from 10⁵ to 10⁸ cells/test.

The Rat IgG2a Isotype Control eFluor 605NC (cat. 93-4321) should be used at 5 µL/test.

Laser/Filter Recommendation: When using eFluor 605NC, we recommend excitation with the 405nm violet laser with an appropriate filter set, such as the 595LP dichroic mirror with the 605/40 bandpass filter. An acceptable alternative is the 610/20 bandpass filter. For instruments not equipped with a violet laser, the eFluor 605NC is also excited by the 488 nm blue laser and can be used as a PE-Texas Red alternative.

Fixation Recommendation: When fixing samples that have been stained with nanocrystal reagents, we recommend keeping the total volume at approximately 200 µL of IC Fixation Buffer (cat. 00-8222) and the exposure time 30-60 minutes to preserve the optimal fluorescent signal from the nanocrystal reagent.

For answers about fixation and other questions, please refer to Nanocrystal Frequently Asked Questions or contact eBioscience Technical Support.

References

Ortega, G., P. E. Kory, et al. (1986). Role of Ly-6 in lymphocyte activation. I. Characterization of a monoclonal antibody to a nonpolymorphic Ly-6 specificity. J Immunol 137(10): 3240-6.

Malek, T. R., G. Ortega, et al. (1986). Role of Ly-6 in lymphocyte activation. II. Induction of T cell activation by monoclonal anti-Ly-6 antibodies. J

Exp Med 164(3): 709-22.

Related Products

00-4222 Flow Cytometry Staining Buffer

17-1171 Anti-Mouse CD117 (c-Kit) APC (2B8)

93-4321 Rat IgG2a K Isotype Control eFluor® 605NC (eBR2a)

Legal

Under patent number: US 7,939,170 and additional pending patent application(s)

Not for further distribution without written consent.

Copyright © 2000-2012 eBioscience, Inc.

Tel: 888.999.1371 or 858.642.2058 • Fax: 858.642.2046 • www.eBioscience.com • info@eBioscience.com