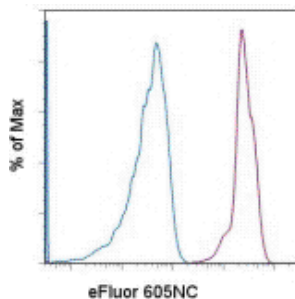


Anti-Human CD45 eFluor® 605NC

Catalog Number: 93-0459

Also Known As: Leukocyte Common Antigen, LCA, Ly-5

RUO: For Research Use Only. Not for use in diagnostic procedures.



Staining of normal human peripheral blood cells with Mouse IgG1 K Isotype Control eFluor® 605NC (cat. 93-4714) (blue) or Anti-Human CD45 eFluor® 605NC (purple). Cells in the lymphocyte gate were used for analysis.

Product Information

Contents: Anti-Human CD45 eFluor® 605NC

REF **Catalog Number:** 93-0459

Clone: HI30

Concentration: 5 μ L

Host/Isotype: Mouse IgG1, kappa

HLDA Workshop: IV N816

Formulation: aqueous buffer, 0.09% sodium azide, may contain carrier protein/stabilizer

Temperature Limitation: Store at 2-8°C. Light sensitive material. This product is guaranteed for 6 months upon receipt when stored properly.

LOT **Batch Code:** Refer to Vial

Use By: Refer to Vial

Caution, contains Azide

Description

The HI30 monoclonal antibody reacts with all isoforms of human CD45, also known as Leukocyte Common Antigen (LCA). CD45 is expressed by all hematopoietic cells excluding circulating erythrocytes and platelets. The cytoplasmic portion of CD45 has tyrosine phosphatase enzymatic activity and plays an important role in activation of lymphocytes.

Applications Reported

This HI30 antibody has been reported for use in flow cytometric analysis.

Applications Tested

This HI30 antibody has been pre-titrated and tested by flow cytometric analysis of normal human peripheral blood cells. This can be used at 5 μ L per test. A test is defined as the amount of antibody that will stain a cell sample in a final volume of 100 μ L. Cell number should be determined empirically but can range from 10^5 to 10^8 cells/test.

The Mouse IgG1 Isotype Control eFluor 605NC (cat. 93-4714) should be used at 5 μ L/test.

Laser/Filter Recommendation: When using eFluor 605NC, we recommend excitation with the 405nm violet laser with an appropriate filter set, such as the 595LP dichroic mirror with the 605/40 bandpass filter. An acceptable alternative is the 610/20 bandpass filter. For instruments not equipped with a violet laser, the eFluor 605NC is also excited by the 488 nm blue laser and can be used as a PE-Texas Red alternative.

Fixation Recommendation: When fixing samples that have been stained with nanocrystal reagents, we recommend keeping the total volume at approximately 200 μ L of IC Fixation Buffer (cat. 00-8222) and the exposure time 30-60 minutes to preserve the optimal fluorescent signal from the nanocrystal reagent.

For answers about fixation and other questions, please refer to Nanocrystal Frequently Asked Questions or contact eBioscience Technical Support.

References

Ninomiya M, Abe A, Katsumi A, Xu J, Ito M, Arai F, Suda T, Ito M, Kiyoi H, Kinoshita T, Naoe T. Homing, proliferation and survival sites of human leukemia cells in vivo in immunodeficient mice. *Leukemia*. 2007 Jan;21(1):136-42. (HI30, IF frozen)

Bouma-ter Steege JC, Baeten CI, Thijssen VL, Satijn SA, Verhoeven IC, Hillen HF, Wagstaff J, Griffioen AW. Angiogenic profile of breast carcinoma determines leukocyte infiltration. *Clin Cancer Res*. 2004 Nov 1;10(21):7171-8. (HI30, IHC frozen)

Knapp, W., B. Dorken, et al. eds. (1989). *Leucocyte Typing IV: White Cell Differentiation Antigens*. Oxford University Press. New York.

Related Products

00-4222 Flow Cytometry Staining Buffer

93-4714 Mouse IgG1 K Isotype Control eFluor® 605NC (P3.6.2.8.1)

Legal

Under patent number: US 7,939,170 and additional pending patent application(s)

Not for further distribution without written consent.

Copyright © 2000-2012 eBioscience, Inc.

Tel: 888.999.1371 or 858.642.2058 • Fax: 858.642.2046 • www.eBioscience.com • info@eBioscience.com