

Alexa Fluor® 700 anti-human CD90 (Thy1)

Catalog # / Size: 328119 / 25 µg
328120 / 100 µg

Clone: 5E10

Isotype: Mouse IgG1, κ

Immunogen: HEL cells

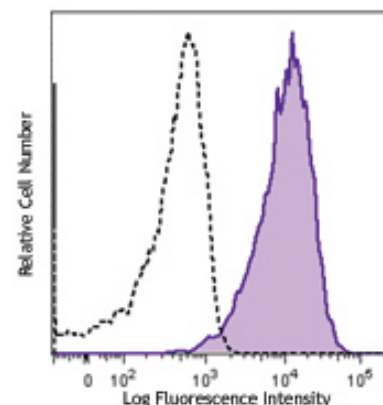
Reactivity: Human, **Cross-Reactivity:** Baboon, Cynomolgus, Rhesus, Pigtailed Macaque, Pig²

Preparation: The antibody was purified by affinity chromatography, and conjugated with Alexa Fluor® 700 under optimal conditions. The solution is free of unconjugated Alexa Fluor® 700.

Formulation: Phosphate-buffered solution, pH 7.2, containing 0.09% sodium azide.

Concentration: 0.5 mg/ml

Storage: The antibody solution should be stored undiluted at 4°C and protected from prolonged exposure to light. **Do not freeze.**



Human erythroleukemic cell line (HEL) were stained with CD90 (clone 5E10) Alexa Fluor® 700 (filled histogram) or mouse IgG1, κ Alexa Fluor® 700 isotype control (open histogram).

Applications:

Applications: FC - Quality tested

Recommended Usage: This reagent is developed for immunofluorescent staining for flow cytometric analysis, the suggested use of this reagent is ≤ 2.0 µg per 10⁶ cells in 100 µl volume or 100 µl of whole blood. It is highly recommended that the reagent be titrated for optimal performance for each application.

* Alexa Fluor® 700 has a maximum emission of 719 nm when it is excited at 633nm / 635nm. Prior to using Alexa Fluor® 700 conjugate for flow cytometric analysis, please verify your flow cytometer's capability of exciting and detecting the fluorochrome.

** Alexa Fluor® is a registered trademark of Molecular Probes, Inc. Alexa Fluor® dye antibody conjugates are sold under license from Molecular Probes, Inc. for research use only, except for use in combination with microarrays and high content screening, and are covered by pending and issued patents.

Application Notes: Additional reported (for the relevant formats) applications include: immunohistochemical staining of acetone-fixed frozen sections and immunoprecipitation¹.

Application References: 1. Craig W, *et al.* 1993. *J. Exp. Med.* 177:1331.
2. Gundlach CW 4th, *et al.* 2011. *Bioconjug. Chem.* 22:1706.

Description: CD90 is a 25-35 kD GPI-anchored protein, also known as Thy-1. It belongs to Ig superfamily. Human CD90 is expressed on neuronal cells, a subset of CD34⁺ cells, a subset of fetal liver cells and fetal thymocytes, fibroblasts, activated endothelial cells, and some leukemia cell lines. CD34⁺CD90⁺ cells are primitive hematopoietic stem cells. It has been reported that Thy-1 binds with β2 and β3 integrins and plays bimodal roles in the regulation of cell adhesion and neurite outgrowth, and inhibits hematopoietic stem cells proliferation and differentiation.

Antigen References: 1. McKenzie JL, *et al.* 1981. *J. Immunol.* 126:843.
2. Avalos AM, *et al.* 2002. *Biol. Res.* 35:231.
3. Wetzell A, *et al.* 2004. *J. Immunol.* 172:3850.

Related Products: Product

Alexa Fluor® 700 Mouse IgG1, κ Isotype Ctrl
Cell Staining Buffer
RBC Lysis Buffer (10X)
Human TruStain FcX™ (Fc Receptor Blocking Solution)

Clone
MOPC-21

Application
FC, ICFC
FC, ICC, ICFC
FC, ICFC
FC, ICC, ICFC



For research use only. Not for diagnostic use. Not for resale. BioLegend will not be held responsible for patent infringement or other violations that may occur with the use of our products.



*These products may be covered by one or more Limited Use Label Licenses (see the BioLegend Catalog or our website, www.biollegend.com/ordering#license). BioLegend products may not be transferred to third parties, resold, modified for resale, or used to manufacture commercial products, reverse engineer functionally similar materials, or to provide a service to third parties without written approval of BioLegend. By use of these products you accept the terms and conditions of all applicable Limited Use Label Licenses. Unless otherwise indicated, these products are for research use only and are not intended for human or animal diagnostic, therapeutic or commercial use.