

Product Data Sheet

PerCP/Cy5.5 anti-human CD90 (Thy1)

Catalog # / Size: 328117 / 25 tests
328118 / 100 tests

Clone: 5E10

Isotype: Mouse IgG1, κ

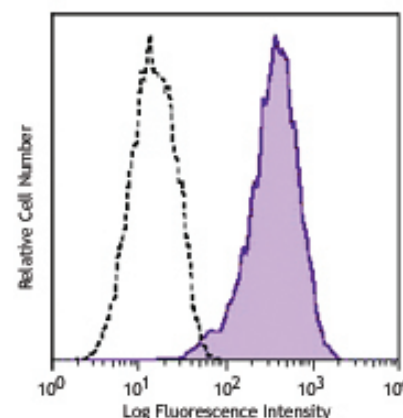
Immunogen: HEL cells

Reactivity: Human, **Cross-Reactivity:** Baboon, Cynomolgus, Rhesus, Pigtailed Macaque, Pig²

Preparation: The antibody was purified by affinity chromatography, and conjugated with PerCP/Cy5.5 under optimal conditions. The solution is free of unconjugated PerCP/Cy5.5 and unconjugated antibody.

Formulation: Phosphate-buffered solution, pH 7.2, containing 0.09% sodium azide and 0.2% (w/v) BSA (origin USA).

Storage: The antibody solution should be stored undiluted at 4°C and protected from prolonged exposure to light. **Do not freeze.**



Human erythroleukemia cell line (HEL) was stained with CD90 (clone 5E10) PerCP/Cy5.5 (filled histogram) or mouse IgG1, κ PerCP/Cy5.5 isotype control (open histogram).

Applications:

Applications: FC - Quality tested

Recommended Usage: Each lot of this antibody is quality control tested by immunofluorescent staining with flow cytometric analysis. For immunofluorescent staining, the suggested use of this reagent is $\leq 1.0 \mu\text{g}$ per million cells in 100 μl volume. It is recommended that the reagent be titrated for optimal performance for each application.

* PerCP/Cy5.5 has a maximum absorption of 482 nm and a maximum emission of 690 nm.

Application Notes: Additional reported (for the relevant formats) applications include: immunohistochemical staining of acetone-fixed frozen sections and immunoprecipitation¹.

Cy3, Cy5, Cy5.5 and Cy7 are subject to proprietary rights of GE Healthcare Bio-Sciences Corp. and Carnegie Mellon University and made and sold under license from GE Healthcare Bio-Sciences Corp. Sale of this product is licensed for research use only.

Application References: 1. Craig W, *et al.* 1993. *J. Exp. Med.* 177:1331.
2. Gundlach CW 4th, *et al.* 2011. *Bioconj. Chem.* 22:1706.

Description: CD90 is a 25-35 kD GPI-anchored protein, also known as Thy-1. It belongs to Ig superfamily. Human CD90 is expressed on neuronal cells, a subset of CD34⁺ cells, a subset of fetal liver cells and fetal thymocytes, fibroblasts, activated endothelial cells, and some leukemia cell lines. CD34⁺CD90⁺ cells are primitive hematopoietic stem cells. It has been reported that Thy-1 binds with $\beta 2$ and $\beta 3$ integrins and plays bimodal roles in the regulation of cell adhesion and neurite outgrowth, and inhibits hematopoietic stem cells proliferation and differentiation.

Antigen References: 1. McKenzie JL, *et al.* 1981. *J. Immunol.* 126:843.
2. Avalos AM, *et al.* 2002. *Biol. Res.* 35:231.
3. Wetzel A, *et al.* 2004. *J. Immunol.* 172:3850.

Related Products:

Product
Cell Staining Buffer
RBC Lysis Buffer (10X)
PerCP/Cy5.5 Mouse IgG1, κ Isotype Ctrl
Human TruStain FcX™ (Fc Receptor Blocking Solution)

Clone

MOPC-21

Application

FC, ICC, ICFC
FC, ICFC
FC, ICFC
FC, ICC, ICFC



For research use only. Not for diagnostic use. Not for resale. BioLegend will not be held responsible for patent infringement or other violations that may occur with the use of our products.



*These products may be covered by one or more Limited Use Label Licenses (see the BioLegend Catalog or our website, www.biollegend.com/ordering#license). BioLegend products may not be transferred to third parties, resold, modified for resale, or used to manufacture commercial products, reverse engineer functionally similar materials, or to provide a service to third parties without written approval of BioLegend. By use of these products you accept the terms and conditions of all applicable Limited Use Label Licenses. Unless otherwise indicated, these products are for research use only and are not intended for human or animal diagnostic, therapeutic or commercial use.