

## PE/Cy5 anti-human CD90 (Thy1)

**Catalog # / Size:** 328111 / 25 tests  
328112 / 100 tests

**Clone:** 5E10

**Isotype:** Mouse IgG1,  $\kappa$

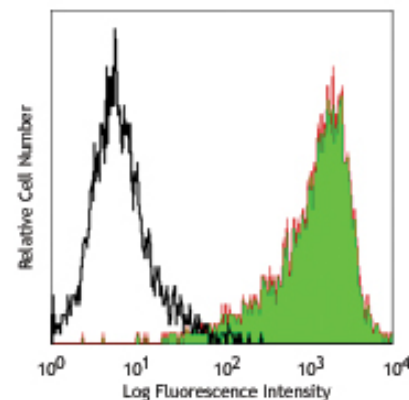
**Immunogen:** HEL cells

**Reactivity:** Human, **Cross-Reactivity:** Baboon, Cynomolgus, Rhesus, Pigtailed Macaque, Pig<sup>2</sup>

**Preparation:** The antibody was purified by affinity chromatography, and conjugated with PE/Cy5 under optimal conditions. The solution is free of unconjugated PE/Cy5 and unconjugated antibody.

**Formulation:** Phosphate-buffered solution, pH 7.2, containing 0.09% sodium azide and 0.2% (w/v) BSA (origin USA).

**Storage:** The antibody solution should be stored undiluted at 4°C and protected from prolonged exposure to light. **Do not freeze.**



Human erythroleukemic cell line HEL stained with 5E10 PE/Cy5

## Applications:

**Applications:** FC - Quality tested

**Recommended Usage:** Each lot of this antibody is quality control tested by immunofluorescent staining with flow cytometric analysis. **Test size products are transitioning from 20  $\mu$ l to 5  $\mu$ l per test.** Please check your vial or your CoA to find the suggested use of this reagent per million cells in 100  $\mu$ l staining volume or per 100  $\mu$ l of whole blood. It is recommended that the reagent be titrated for optimal performance for each application. Read more at [www.biolegend.com/testsize](http://www.biolegend.com/testsize) regarding the test size change.

**Application Notes:** Additional reported (for the relevant formats) applications include: immunohistochemical staining of acetone-fixed frozen sections and immunoprecipitation<sup>1</sup>.

Cy3, Cy5, Cy5.5 and Cy7 are subject to proprietary rights of GE Healthcare Bio-Sciences Corp. and Carnegie Mellon University and made and sold under license from GE Healthcare Bio-Sciences Corp. Sale of this product is licensed for research use only.

**Application References:** 1. Craig W, *et al.* 1993. *J. Exp. Med.* 177:1331.  
2. Gundlach CW 4th, *et al.* 2011. *Bioconj. Chem.* 22:1706.

**Description:** CD90 is a 25-35 kD GPI-anchored protein, also known as Thy-1. It belongs to Ig superfamily. Human CD90 is expressed on neuronal cells, a subset of CD34<sup>+</sup> cells, a subset of fetal liver cells and fetal thymocytes, fibroblasts, activated endothelial cells, and some leukemia cell lines. CD34<sup>+</sup>CD90<sup>+</sup> cells are primitive hematopoietic stem cells. It has been reported that Thy-1 binds with  $\beta$ 2 and  $\beta$ 3 integrins and plays bimodal roles in the regulation of cell adhesion and neurite outgrowth, and inhibits hematopoietic stem cells proliferation and differentiation.

**Antigen References:** 1. McKenzie JL, *et al.* 1981. *J. Immunol.* 126:843.  
2. Avalos AM, *et al.* 2002. *Biol. Res.* 35:231.  
3. Wetzel A, *et al.* 2004. *J. Immunol.* 172:3850.

### Related Products:

**Product**  
PE/Cy5 Mouse IgG1,  $\kappa$  Isotype Ctrl  
Cell Staining Buffer  
Human TruStain FcX™ (Fc Receptor Blocking Solution)

**Clone**  
MOPC-21

**Application**  
FC, ICFC  
FC, ICC, ICFC  
FC, ICC, ICFC



For research use only. Not for diagnostic use. Not for resale. BioLegend will not be held responsible for patent infringement or other violations that may occur with the use of our products.



\*These products may be covered by one or more Limited Use Label Licenses (see the BioLegend Catalog or our website, [www.biolegend.com/ordering#license](http://www.biolegend.com/ordering#license)). BioLegend products may not be transferred to third parties, resold, modified for resale, or used to manufacture commercial products, reverse engineer functionally similar materials, or to provide a service to third parties without written approval of BioLegend. By use of these products you accept the terms and conditions of all applicable Limited Use Label Licenses. Unless otherwise indicated, these products are for research use only and are not intended for human or animal diagnostic, therapeutic or commercial use.