

## Purified anti-human CD82

**Catalog # / Size:** 342102 / 100 µg

**Clone:** ASL-24

**Isotype:** Mouse IgG1, κ

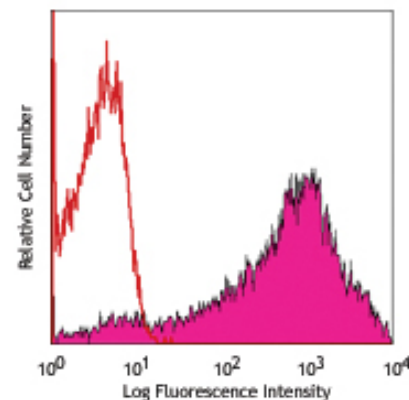
**Reactivity:** Human

**Preparation:** The antibody was purified by affinity chromatography.

**Formulation:** Phosphate-buffered solution, pH 7.2, containing 0.09% sodium azide.

**Concentration:** 0.5 mg/ml

**Storage:** The antibody solution should be stored undiluted at 4°C.



Human peripheral blood lymphocytes stained with purified ASL-24 conjugated with PE.

## Applications:

**Applications:** FC - Quality tested

**Recommended Usage:** Each lot of this antibody is quality control tested by immunofluorescent staining with flow cytometric analysis. For immunofluorescent staining, the suggested use of this reagent is  $\leq 1.0$  µg per  $10^6$  cells in 100 µl volume or 100 µl of whole blood. It is recommended that the reagent be titrated for optimal performance for each application.

**Description:** CD82 is a 45-90 kD type III tetraspan membrane protein which is encoded by the KAI1 gene. A member of the 4-span transmembrane protein superfamily (TM4SF) CD82 forms a complex with CD37, CD53, CD81, ECM and MHC molecules. CD82 is expressed on monocytes, granulocytes, lymphocytes, epithelial cells, endothelial cells, and fibroblasts and plays a role in signal transduction and adhesion. It has been suggested CD82 functions as a tumor suppressor as loss of expression has been found to promote tumor metastasis.

**Antigen References:**

1. Miranti CK. 2009. *Cell. Signal.* 21:196
2. Abe M, *et al.* 2008. 266:163
3. Lee JH *et al.* 2004. *Cancer Res.* 64:4235
4. Lagaudriere-Gesbert C, *et al.* 1997. *J. Immunol.* 158:2790

**Related Products:**

**Product**  
Purified Mouse IgG1, κ Isotype Ctrl  
Cell Staining Buffer  
RBC Lysis Buffer (10X)

**Clone**  
MOPC-21

**Application**  
FC, ICFC, ICC, IF, IHC, IP, WB  
FC, ICC, ICFC  
FC, ICFC



For research use only. Not for diagnostic use. Not for resale. BioLegend will not be held responsible for patent infringement or other violations that may occur with the use of our products.



\*These products may be covered by one or more Limited Use Label Licenses (see the BioLegend Catalog or our website, [www.biolegend.com/ordering#license](http://www.biolegend.com/ordering#license)). BioLegend products may not be transferred to third parties, resold, modified for resale, or used to manufacture commercial products, reverse engineer functionally similar materials, or to provide a service to third parties without written approval of BioLegend. By use of these products you accept the terms and conditions of all applicable Limited Use Label Licenses. Unless otherwise indicated, these products are for research use only and are not intended for human or animal diagnostic, therapeutic or commercial use.