

Alexa Fluor® 647 anti-human CD85j (ILT2)

Catalog # / Size: 333709 / 25 tests
333710 / 100 tests

Clone: GHI/75

Isotype: Mouse IgG2b, κ

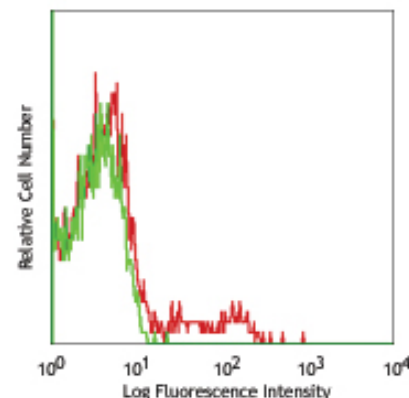
Workshop Number: V B032

Reactivity: Human

Preparation: The antibody was purified by affinity chromatography, and conjugated with Alexa Fluor® 647 under optimal conditions. The solution is free of unconjugated Alexa Fluor® 647.

Formulation: Phosphate-buffered solution, pH 7.2, containing 0.09% sodium azide and 0.2% (w/v) BSA (origin USA).

Storage: The antibody solution should be stored undiluted at 4°C and protected from prolonged exposure to light. **Do not freeze.**



Human peripheral blood lymphocytes stained with GHI/75 Alexa Fluor® 647

Applications:

Applications: FC Quality tested

Recommended Usage: Each lot of this antibody is quality control tested by immunofluorescent staining with flow cytometric analysis. For immunofluorescent staining, the suggested use of this reagent is 5 μ l per million cells or 5 μ l per 100 μ l of whole blood. It is recommended that the reagent be titrated for optimal performance for each application.

* Alexa Fluor® 647 has a maximum emission of 668 nm when it is excited at 633nm / 635nm.

** Alexa Fluor® is a registered trademark of Molecular Probes, Inc. Alexa Fluor® dye antibody conjugates are sold under license from Molecular Probes, Inc. for research use only, except for use in combination with microarrays and high content screening, and are covered by pending and issued patents.

Application Notes: Additional reported application: Block HLA-G induced TGF- β 1 production.

Application References: 1. Pulford K, *et al.* 1991. *Clin. Exp. Immunol.* 85:429
2. McIntire RH, *et al.* 2004. *J. Leukoc. Biol.* 76:1220

Description: CD85 is a group of Ig superfamily transmembrane glycoproteins called Ig-Like Transcripts (ILTs) or Leukocyte Immunoglobulin-like Receptors (LIRs). CD85j is the 110kD member, known as ILT2, LIR1, or LILRB1, and MIR7. ILT2 structurally has four Ig domains and contains ITIMs in its cytoplasmic tail that provide inhibitory signals by recruiting SHP-1. ILT2 is found on the surface of B cells, plasma cells, dendritic cells, monocytes, subsets of NK and T cells. The ligands of ILT2 include a broad range of HLA-A, -B molecules, some HLA-C and HLA-G molecules, and the human cytomegalovirus UL18 protein.

Antigen References: 1. Zola H, *et al.* 2007. *Leukocyte and Stromal Cell Molecules: The CD Markers* Wiley-Liss A John Wiley & Sons Inc, Publication
2. Kirwan SE and Burshtyn DN. 2005. *J. Immunol.* 175:5006

Related Products:	Product	Clone	Application
	Alexa Fluor® 647 Mouse IgG2b, κ Isotype Ctrl	MPC-11	FC, ICFC
	Cell Staining Buffer		FC, ICC, ICFC
	RBC Lysis Buffer (10X)		FC, ICFC
	Human TruStain FcX™ (Fc Receptor Blocking Solution)		FC, ICC, ICFC



For research use only. Not for diagnostic use. Not for resale. BioLegend will not be held responsible for patent infringement or other violations that may occur with the use of our products.



*These products may be covered by one or more Limited Use Label Licenses (see the BioLegend Catalog or our website, www.biolegend.com/ordering#license). BioLegend products may not be transferred to third parties, resold, modified for resale, or used to manufacture commercial products, reverse engineer functionally similar materials, or to provide a service to third parties without written approval of BioLegend. By use of these products you accept the terms and conditions of all applicable Limited Use Label Licenses. Unless otherwise indicated, these products are for research use only and are not intended for human or animal diagnostic, therapeutic or commercial use.